

A LIST OF THE TYPE-SPECIMENS OF HYMENOPTERA  
DESCRIBED BY K. TSUNEKI  
IN THE MUSEUM OF NATURE AND HUMAN ACTIVITIES, HYOGO  
(MNHAH)

Yoshiaki HASHIMOTO  
&  
Akinori NAKANISHI

CATALOGUE OF COLLECTIONS  
IN  
THE MUSEUM OF NATURE AND HUMAN ACTIVITIES, HYOGO  
No. 2

1997

**A LIST OF THE TYPE-SPECIMENS OF HYMENOPTERA  
DESCRIBED BY K. TSUNEKI  
IN THE MUSEUM OF NATURE AND HUMAN ACTIVITIES, HYOGO  
(MNHAH)**

Yoshiaki HASHIMOTO  
&  
Akinori NAKANISHI

CATALOGUE OF COLLECTIONS  
IN  
THE MUSEUM OF NATURE AND HUMAN ACTIVITIES, HYOGO  
No. 2

1997

SERIES PUBLICATIONS OF THE MUSEUM OF NATURE AND HUMAN ACTIVITIES, HYOGO

CATALOGUE OF COLLECTIONS IN THE MUSEUM OF NATURE AND HUMAN ACTIVITIES, HYOGO

No. 2

"A LIST OF THE TYPE-SPECIMENS OF HYMENOPTERA DESCRIBED BY K. TSUNEKI

IN THE MUSEUM OF NATURE AND HUMAN ACTIVITIES, HYOGO (MNHAH)"

MUSEUM OF NATURE AND HUMAN ACTIVITIES, HYOGO

6-chome Yayoigaoka, Sanda, Hyogo, 669-13 Japan



**Plate 1.** Dr. Katsuji TSUNEKI (1908-1994)



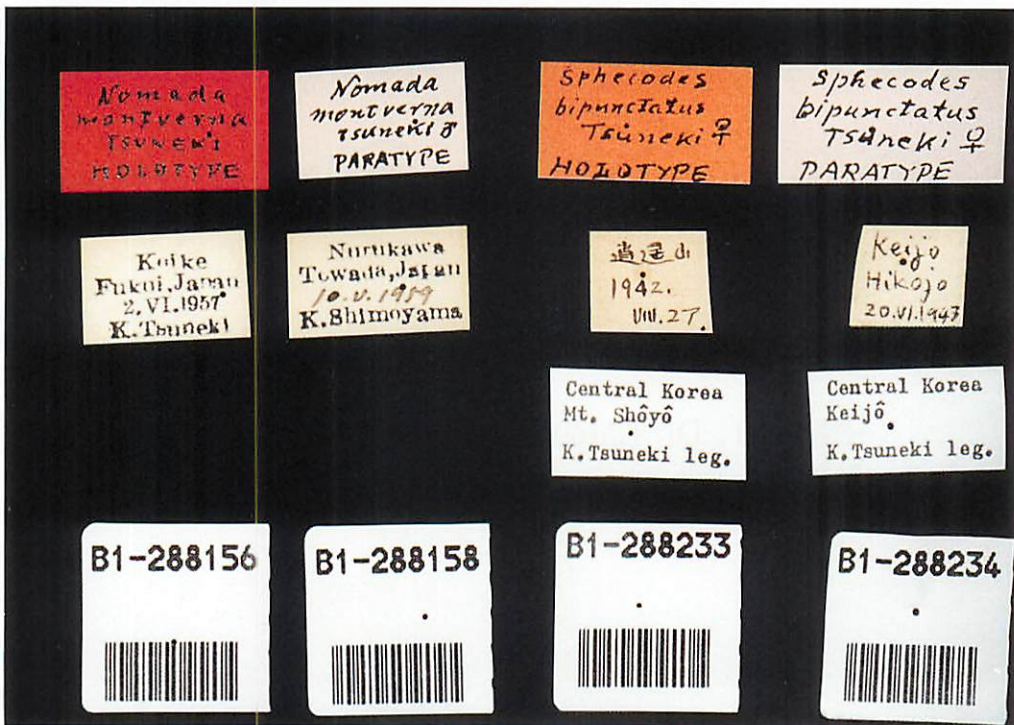
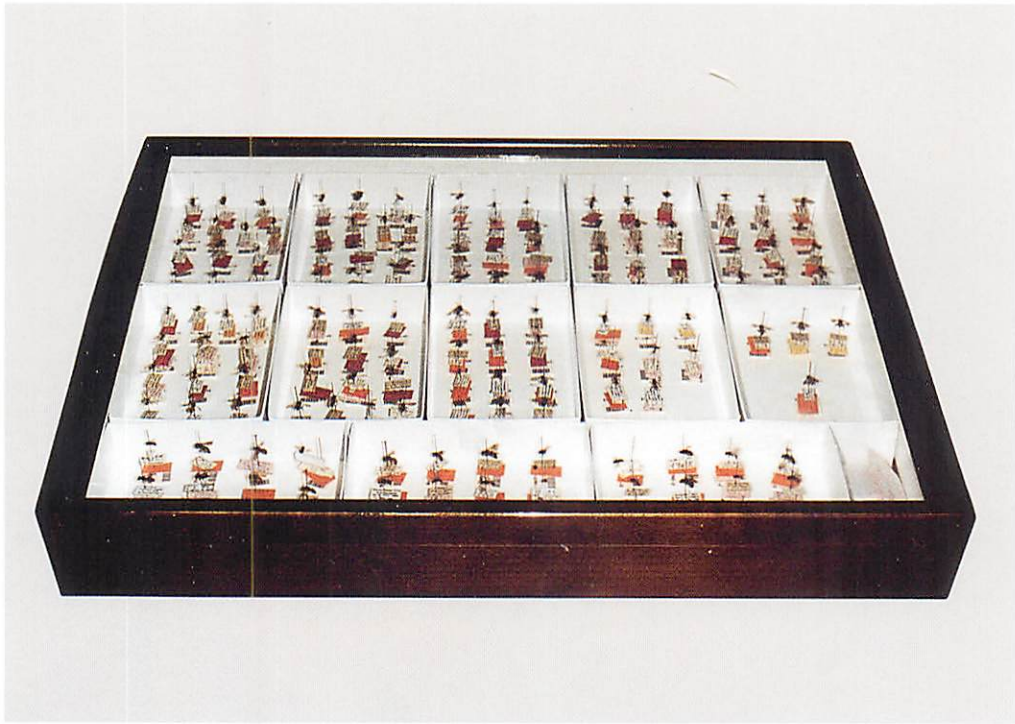


Plate 2. The Tsuneki Type Collection: Drawer for types (above); some selected labels (below)

## 序文

このたび兵庫県立人と自然の博物館収蔵資料目録として、故常木勝次博士が記載されたハチ類のタイプ標本リストを刊行することができました。貴重な標本を当館に寄贈していただきましたご遺族の澄子夫人とご子息に感謝いたします。また常木博士の没後、標本が当館に収蔵されるまでの間、標本管理にご尽力いただきました博士の門弟の方々、特に田塾 正、黒川秀吉、室田忠男、野坂千津子の皆様に感謝いたします。

常木博士は1908年9月12日に埼玉県に生まれました。1944年4月より1952年9月まで北海道大学で助手を勤め、同年10月より福井大学に教授として着任、1975年に定年退官されました。退官後は静岡県三島市に移られ、1994年2月2日にその生涯を終えられるまで一切の公職に就くこと無くご自宅で研究に専念されました。

博士は400編にも及ぶ原著論文と約100編の普及書を残されました。それらの多くはハチ類の生態と分類に関するものですが、鳥類の心理学的研究に関する論文も約10編著されています。ハチ類の記載論文は、1947年の朝鮮産ギングチバチ類と中国産セイボウ類に始まり1993年の日本産アリバチ類まで160編にも達しています。これらの論文でカリバチ類と労働寄生性ハナバチ類を中心とする1,426の新種と新亜種が記載されました。記載されたハチ類には、日本産だけでなく台湾、朝鮮半島、モンゴル、フィリピン、タイ、オーストラリアなどの種も含まれています。外国産のタイプ標本は、アメリカのスミソニアン研究所や英国自然史博物館など、世界各国の博物館に分かれて収蔵されています。一方、日本産のタイプ標本は、一部個人コレクションとして保管されているものをのぞくと、そのほとんどを兵庫県立人と自然の博物館に収蔵することができました。これら377種、545点の常木コレクションタイプ標本リストがハチ類研究の発展に少しでも寄与できれば幸いです。

橋本佳明 中西明徳

1997年 3月

## Preface

On February 2nd 1994, Dr. Katsuji Tsuneki, a leading authority on Eastern and Southeast Asian wasps, passed away at the age of 86 in Mishima, Japan. Dr. Tsuneki was born on September 12th 1908 in Saitama Prefecture. From April 1944 to September 1952 he lived in Sapporo where he was a research assistant at Hokkaido University. Thereafter he lived in Fukui Prefecture and was a professor at Fukui University until he retired from the university in March 1975. He moved from Fukui to Mishima, Shizuoka Prefecture just after retiring from Fukui University. In Mishima he devoted his life to the entomological work especially wasp systematics.

Throughout his career Tsuneki's dominant interest in entomology was the field of biology and systematics of wasps. He published about 400 original papers mainly on entomology, including about 10 original papers on the social ecology of birds such as the canary and Java sparrow. Moreover he published about 100 papers in the Japanese language to diffuse the knowledge on entomology. He described about 1430 new species and subspecies of wasps and bees (*Nomada* and *Sphécodes*) mainly from Japan, Taiwan, Formosa, Korea, Mongolia, the Philippines, Thailand, and the Australian Region.

The type specimens described by Tsuneki from various countries and regions except for Japan are preserved in the following museums: Bernice P. Bishop Museum, Honolulu; Natural History Museum, London; California Academy of Sciences, San Francisco; Hungarian Natural History Museum, Budapest; National Museum of Natural History, Smithsonian Institution, Washington, D. C. ; Naturhistorisches Museum, Basels; Rijksmuseum van Natuurlijke Historie, Leiden; University Museum of Oxford, Hope Department of Entomology; Zoological Museum, University of Copenhagen; Hokkaido University, Sapporo; Kyushu University, Fukuoka; Osaka City Museum of Natural History, Osaka; Osaka Prefectural University, Sakai. Most type specimens from Japan are preserved in the Museum of Nature and Human Activities, Hyogo and several type specimens are in private collections.

It was Tsuneki's wish and our hope that his type materials described from Japan would be donated to the Museum of Nature and Human Activities, Hyogo. We wish to thank Mrs. Sumiko Tsuneki and her sons for fulfilling his wish of having his type materials donated to the Museum of Nature and Human Activities, Hyogo.

Y. HASHIMOTO & A. NAKANISHI  
March, 1997

**A LIST OF THE TYPE-SPECIMENS OF HYMENOPTERA  
DESCRIBED BY K. TSUNEKI  
IN THE MUSEUM OF NATURE AND HUMAN ACTIVITIES, HYOGO (MNHAH)**

Y. HASHIMOTO & A. NAKANISHI

**CONTENTS**

SYNOPSIS	<i>Page</i> 1
INTRODUCTION	1
A LIST OF THE TYPE-SPECIMENS OF HYMENOPTERA DESCRIBED BY K. TSUNEKI IN MNHAH	3
REFERENCES	38
INDEX	43

**SYNOPSIS**

A list is given of the type-specimens of 377 species and subspecies originally described by K. Tsuneki and deposited in the collection of MNHAH.

**INTRODUCTION**

Dr. Katsuji Tsuneki (1908-1994) was a great entomologist who dedicated himself to the study of the taxonomy and behavior of Aculeate Hymenoptera. Tsuneki published his first paper in 1929 with observation on the behavior of a potter wasp, and the last in 1993 on the description of new Japanese species of Mutillidae. He continued studies of Hymenoptera just before the time of his death. His taxonomic papers began in 1947 with the descriptions of Korean crabronines and Chinese chrysidids. He published over 160 revisionary papers, and described 1,426 species and subspecies of Hymenoptera. Most of the species described by Tsuneki were Spheciforme wasps, but he published large revisions of *Nomada* in 1973, *Sphecodes* in 1983 and *Tiphia* in 1985. Furthermore, he published a series of substantial revisions of the Taiwanese and Philippine Hymenoptera.

The type-specimens for 377 species and subspecies described by Tsuneki were deposited in MNHAH. They are mainly Japanese Hymenoptera, including 165 species in various Spheciforme genera, 64 in *Nomada*, 55 in *Sphecodes*, 37 in *Tiphia* (see Table.1). The list of these type-material will give considerable assistance to any future workers dealing with the nomenclature of Aculeata Hymenoptera

All the specimens bear data labels and a red rectangular label with the word type-category, holotype or paratype, and species-name in Tsuneki's handwriting (Plate 2. a, b). A further label on which are printed register-number in MNHAH collection and it's bar-code is attached to them (Plate 2. c). The type-material is generally in good condition except that some specimens have the antennae or wings missing. The type-material is stored in unit trays in drawers (Plate 2).

In the present list, the species within families are listed alphabetically, with register-number in MNHAH collection, type-category, sex, locality, date, page reference for the original



description. The data of types are given along with the data quoted directly from the labels beneath the specimens. Where the data on the label conflicts with the published data, the latter is noted. The current status and combination are also noted, where they differ from the original status and combination. In some specimens, the body parts, genitalia or wings etc., are mounted on separate cards. In this case, their condition is noted.

TABLE 1. Number of species described by Tsuneki and housed in MNHAH

superfamily	family	genus	number of species	superfamily	family	genus	number of species
<b>Apoidea (Apiformes)</b>			<b>123</b>			<i>Stigmus</i>	9
	Anthophoridae		68		Philanthidae		7
		<i>Nomada</i>	66			<i>Cerceris</i>	7
		<i>Pasites</i>	2		Sphecidae		2
	Halictidae		55			<i>Sceliphron</i>	1
		<i>Sphecodes</i>	55			<i>Sphex</i>	1
<b>Apoidea (Spheciformes)</b>			<b>167</b>	<b>Vespoidea</b>			<b>84</b>
	Ampulicidae		2		Eumenidae		10
		<i>Ampulex</i>	2			<i>Nannodyrenus</i>	1
	Crabronidae		93			<i>Symmorphus</i>	10
		<i>Crabro</i>	9		Mutillidae		10
		<i>Crossocerus</i>	23			<i>Odontomutilla</i>	1
		<i>Ectemnius</i>	8			<i>Smicromyrme</i>	5
		<i>Lestica</i>	3			<i>Squamulotilla</i>	1
		<i>Liris</i>	3			<i>Trogaspidia</i>	3
		<i>Lyroda</i>	1		Pompilidae		23
		<i>Nitela</i>	3			<i>Anoplius</i>	9
		<i>Oxybelus</i>	2			<i>Auplopus</i>	3
		<i>Pison</i>	1			<i>Ceropales</i>	1
		<i>Rhopalum</i>	11			<i>Ferreola</i>	1
		<i>Tachysphex</i>	3			<i>Ferreoloides</i>	1
		<i>Tachytes</i>	3			<i>Hatanomus</i>	1
		<i>Trypoxylon</i>	23			<i>Hemipepsis</i>	4
	Nyssonidae		15			<i>Homonotus</i>	1
		<i>Alysson</i>	4			<i>Morochares</i>	2
		<i>Argogorytes</i>	1		Scoliidae		3
		<i>Bembecinus</i>	2			<i>Campsomeris</i>	2
		<i>Dienoplus</i>	1			<i>Liacos</i>	1
		<i>Gorytes</i>	5		Tiphiidae		37
		<i>Lestiphorus</i>	1			<i>Tiphia</i>	37
		<i>Nysson</i>	1	<b>Trigonalyoidea</b>			<b>2</b>
	Pemphredonidae		48		Trigonalyidae		2
		<i>Carinostigmus</i>	2			<i>Orthogonalos</i>	1
		<i>Passaloecus</i>	7			<i>Teranishia</i>	1
		<i>Pemphredon</i>	2	<b>Orussoidea</b>			<b>1</b>
		<i>Psen</i>	13		Orussidae		1
		<i>Psenulus</i>	9			<i>Orussus</i>	1
		<i>Spilomena</i>	6				

377spp.

A LIST OF THE TYPE-SPECIMENS OF HYMENOPTERA DESCRIBED BY K. TSUNEKI IN MNHAH

Superfamily Apoidea (Apiformes)  
Family Anthophoridae

*Nomada abtana* 1973 [B1-288110]

HOLOTYPE ♂. Abutagun, Kyogoku, Hokkaido, Japan, 1966.7.17, M. Munakata leg. /Etizenia, No. 66(II) (1973): p. 126

*Nomada aino* 1973 [B1-288111]

HOLOTYPE ♂. Shirikishinai, Hokkaido, Japan, 1964.8.20, M. Munakata leg. /Etizenia, No. 66(I) (1973): p. 40

Both antennae of the holotype are mounted separately on a card attached to the pin on which the specimen is mounted. Currently placed as *Nomada roberjeotiana aino* Tsuneki 1973 by Tsuneki (1975).

*Nomada alboguttata etizenensis* 1975 [B1-288112]

HOLOTYPE ♀. Mt. Akato, Fukui Pref., Japan, 1974.6.1-2, K. Tsuneki leg. /Kontyu, Vol. 43(4) (1975): p. 467

*Nomada alboguttata etizenensis* 1975 [B1-288113]

PARATYPE ♀. Yashagaike, Fukui Pref., Japan, 1974.6.30, H. Okuno leg. /Kontyu, Vol. 43(4) (1975): p. 467

*Nomada alboguttata etizenensis* 1975 [B1-288114]

PARATYPE ♂. Hatogayu, Fukui Pref., Japan, 1957.8.2, K. Tsuneki leg. /Kontyu, Vol. 43(4) (1975): p. 467

*Nomada alboguttata etizenensis* 1975 [B1-288115]

PARATYPE ♂. Yashagaike, Fukui Pref., Japan, 1974.6.30, H. Okuno leg. /Kontyu, Vol. 43(4) (1975): p. 467

*Nomada alboguttata etizenensis* 1975 [B1-288116]

PARATYPE ♂. Koike, Fukui Pref., Japan, 1957.6.1, K. Tsuneki leg. /Kontyu, Vol. 43(4) (1975): p. 467

*Nomada arasiana* 1973 [B1-288117]

HOLOTYPE ♀. Arashi, Fukui Pref., Japan, 1964.7.13, K. Tsuneki leg. /Etizenia, No. 66(I) (1973): p. 44

*Nomada asozuana* 1975 [B1-288118]

HOLOTYPE ♀. Asozu, Fukui Pref., Japan, 1958.4.12, K. Tsuneki leg. /Kontyu, Vol. 43(4) (1975): p. 475

*Nomada aswensis* 1973 [B1-288119]

HOLOTYPE ♀. Mt. Somayama, Fukui Pref., Japan, 1971.5.11, K. Tsuneki leg. /Etizenia, No. 66(II) (1973): p. 100

*Nomada aswensis* 1973 [B1-288120]

PARATYPE ♂. Mt. Hino, Fukui Pref., Japan, 1972.4.29, K. Tsuneki leg. /Etizenia, No. 66(II) (1973): p. 100

*Nomada babai* 1986 [B1-288121]

HOLOTYPE ♂. Oguni-machi, Yamagata Pref., Japan, 1977.6.13, K. Baba leg. /Spec. Publ. Jap. Hymen. Ass., No. 32 (1986): p. 36

*Nomada buyoo* 1976 [B1-288122]

HOLOTYPE ♂. Shirikishinai, near Hakodate, Hokkaido, Japan, 1970.9.15, M. Munakata leg. /Kontyu, Vol. 44(1) (1976): p. 49

*Nomada diervillae* 1973 [B1-288123]

HOLOTYPE ♂. Shimokita, Aomori Pref., Japan, 1967.5.20, Y. Nakamura leg. /Etizenia, No. 66(II) (1973): p. 138

The genitalia of the holotype are mounted separately on a card attached to the pin on which the specimen is mounted.

*Nomada esana* 1973 [B1-288124]

HOLOTYPE ♀. Mt. Esan, Kamedagun, Hokkaido, Japan, 1967.9.6, A. Taguchi leg. /Etizenia, No. 66(I) (1973): p. 36

*Nomada etigonis* 1986 [B1-288125]

PARATYPE ♂. Tsunagi, Mikawa, Niigata Pref., Japan, 1985.5.24, K. Baba leg. /Spec. Publ. Jap. Hymen. Ass., No. 32 (1986): p. 57

*Nomada floricola* 1973 [B1-288126]

HOLOTYPE ♀. Asuwayama, Fukui Pref., Japan, 1958.4.20, K. Tsuneki leg. /Etizenia, No. 66(I) (1973): p. 78

*Nomada fukuiana* 1973 [B1-288127]

HOLOTYPE ♀. Mt. Wahigadake, Fukui Pref., Japan, 1960.5.3, K. Tsuneki leg. /Etizenia, No. 66(I) (1973): p. 75

*Nomada fukuiana* 1973 [B1-288128]

PARATYPE ♂. Iwaya, Fukui Pref., Japan, 1958.4.11, K. Tsuneki leg. /Etizenia, No. 66(I) (1973): p. 75

- Nomada fukuiana* 1973 [B1-288129]  
 PARATYPE ♀. Sanjuhassha, Fukui Pref., Japan, 1957.4.8, K. Tsuneki leg. /Etizenia, No. 66(I) (1973): p. 75
- Nomada ginran* 1973 [B1-288130]  
 HOLOTYPE ♀. Kippodzi, Fukui Pref., Japan, 1972.5.10, K. Tsuneki leg. /Etizenia, No. 66(II) (1973): p. 85
- Nomada hackoda* 1973 [B1-288131]  
 HOLOTYPE ♂. Towada, Aomori Pref., Japan, 1960.6.5, K. Shimoyama leg. /Etizenia, No. 66(II) (1973): p. 128
- Nomada hakodatensis* 1976 [B1-288132]  
 HOLOTYPE ♂. Hakodate Hills, Hokkaido, Japan, 1972.5.28, I. Takahashi leg. /Kontyu, Vol. 44(1) (1976): p. 52  
 Both antennae of the holotype are mounted separately on a card attached to the pin on which the specimen is mounted.
- Nomada hanedai* 1976 [B1-288133]  
 HOLOTYPE ♂. Sunayama Hills, Fukui Pref., Japan, 1965.4.5, Y. Haneda leg. /Kontyu, Vol. 44(1) (1976): p. 58
- Nomada hiachogawa* 1973 [B1-288134]  
 HOLOTYPE ♂. Towada, Aomori Pref., Japan, 1960.6.5, K. Shimoyama leg. /Etizenia, No. 66(II) (1973): p. 134
- Nomada hiachogawa* 1973 [B1-288135]  
 PARATYPE ♂. Hakodate, Hokkaido, Japan, 1960.6.15, M. Munakata leg. /Etizenia, No. 66(II) (1973): p. 134
- Nomada icazti* 1976 [B1-288136]  
 HOLOTYPE ♀. Sunayama Hills, Fukui Pref., Japan, 1968.5.1, Y. Haneda leg. /Kontyu, Vol. 44(1) (1976): p. 59
- Nomada iwakiyamana* 1986 [B1-288137]  
 HOLOTYPE ♀. Mt. Iwaki, Aomori Pref., Japan, 1975.5.29, K. Tsuneki leg. /Spec. Publ. Jap. Hymen. Ass., No. 32 (1986): p. 50
- Nomada kinosukei* 1973 [B1-288138]  
 HOLOTYPE ♀. Koike, Fukui Pref., Japan, 1972.8.19, K. Tsuneki leg. /Etizenia, No. 66(II) (1973): p. 121
- Nomada kinosukei* 1973 [B1-288139]  
 PARATYPE ♀. Koike, Fukui Pref., Japan, 1972.8.19, K. Tsuneki leg. /Etizenia, No. 66(II) (1973): p. 121
- Nomada koikensis* 1973 [B1-288140]  
 HOLOTYPE ♀. Koike, Fukui Pref., Japan, 1972.8.19, K. Tsuneki leg. /Etizenia, No. 66(I) (1973): p. 46
- Nomada koreana* 1986 [B1-288141]  
 HOLOTYPE ♂. Mt. Shoyo, Korea, 1943.8.27, K. Tsuneki leg. /Spec. Publ. Jap. Hymen. Ass., No. 32 (1986): p. 33  
 Primary junior homonym of *Nomada koreana* Cockerell 1926 indicated by Alexander & Schwarz (1994).
- Nomada koreana* 1986 [B1-288142]  
 PARATYPE ♂. Mt. Shoyo, Korea, 1943.8.27, K. Tsuneki leg. /Spec. Publ. Jap. Hymen. Ass., No. 32 (1986): p. 33  
 Primary junior homonym of *Nomada koreana* Cockerell 1926 indicated by Alexander & Schwarz (1994).
- Nomada kotomaria* 1986 [B1-288143]  
 HOLOTYPE ♀. Kotomari, Aomori Pref., Japan, 1973.6.24, K. Shimoyama leg. /Spec. Publ. Jap. Hymen. Ass., No. 32 (1986): p. 51
- Nomada kuro* 1986 [B1-288144]  
 HOLOTYPE ♀. Iwaya, Fukui Pref., Japan, 1957.5.9, K. Tsuneki leg. /Spec. Publ. Jap. Hymen. Ass., No. 32 (1986): p. 52  
 The holotype data conflicts with the published data ("1958.4.11").
- Nomada kuro* 1986 [B1-288145]  
 PARATYPE ♀. Nishizawa-keikoku, Yamanashi Pref., Japan, 1985.5.28, H. Suda leg. /Spec. Publ. Jap. Hymen. Ass., No. 32 (1986): p. 52
- Nomada kuro* 1986 [B1-288146]  
 PARATYPE ♀. Nishizawa-keikoku, Yamanashi Pref., Japan, 1985.5.28, H. Suda leg. /Spec. Publ. Jap. Hymen. Ass., No. 32 (1986): p. 52
- Nomada kuro* 1986 [B1-288147]  
 PARATYPE ♀. Oguni-machi, Yamagata Pref., Japan, 1977.6.4, K. Baba leg. /Spec. Publ. Jap. Hymen. Ass., No. 32 (1986): p. 52
- Nomada mamiyai* 1976 [B1-288148]  
 HOLOTYPE ♂. Fukushima, near Hakodate, Hokkaido, Japan, 1973.5.19, M. Munakata leg. /Kontyu, Vol. 44(1) (1976): p. 54

***Nomada melanura*** 1973 [B1-288149]

HOLOTYPE ♀. Jozankei, Hokkaido, Japan, 1945.9.10, K. Tsuneki leg. /Etizenia, No. 66(I) (1973): p. 30  
Currently renamed as *Nomada hakusana momoglonis* Tsuneki 1975 by Alexander & Schwarz (1994).

***Nomada melanura hakusana*** 1973 [B1-288150]

HOLOTYPE ♀. Mt. Haku (Rokumanzan), Ishikawa Pref., Japan, 1956.8.16, K. Tsuneki leg. /Etizenia, No. 66(I) (1973): p. 32  
Currently renamed as *Nomada hakusana hakusana* Tsuneki 1975 by Alexander & Schwarz (1994).

***Nomada melanura hakusana*** 1973 [B1-288151]

PARATYPE ♀. Mt. Haku, Ishikawa Pref., Japan, 1956.8.14, K. Tsuneki leg. /Etizenia, No. 66(I) (1973): p. 32  
Currently renamed as *Nomada hakusana hakusana* Tsuneki 1975 by Alexander & Schwarz (1994).

***Nomada melanura hakusana*** 1973 [B1-288152]

PARATYPE ♀. Mt. Haku, Ishikawa Pref., Japan, 1956.8.15, K. Tsuneki leg. /Etizenia, No. 66(I) (1973): p. 32  
Currently renamed as *Nomada hakusana hakusana* Tsuneki 1975 by Alexander & Schwarz (1994).

***Nomada melanura hakusana*** 1973 [B1-288153]

PARATYPE ♀. Mt. Haku, Ishikawa Pref., Japan, 1965.8.17, K. Tsuneki leg. /Etizenia, No. 66(I) (1973): p. 32  
Currently renamed as *Nomada hakusana hakusana* Tsuneki 1975 by Alexander & Schwarz (1994).

***Nomada miensis*** 1973 [B1-288154]

HOLOTYPE ♀. Tsu, Mie Pref., Japan, 1956.4.18, K. Tsuneki leg. /Etizenia, No. 66(I) (1973): p. 73  
The holotype has both antennae missing. Currently placed as a synonym of *Nomada koebelei* Cockerell 1911 by Tsuneki (1975).

***Nomada mishimana*** 1976 [B1-288155]

HOLOTYPE ♂. Mt. Yamada, Mishima, Shizuoka Pref., Japan, 1975.4.11, K. Tsuneki leg. /Kontyu, Vol. 44(2) (1976): p. 154  
The genitalia and right hind tarsus of the holotype are mounted separately on a card attached to the pin on which the specimen is mounted.

***Nomada montverna*** 1973 [B1-288156]

HOLOTYPE ♂. Koike, Fukui Pref., Japan, 1957.6.2, K. Tsuneki leg. /Etizenia, No. 66(II) (1973): p. 119

***Nomada montverna*** 1973 [B1-288157]

PARATYPE ♂. Koike, Fukui Pref., Japan, 1957.6.2, K. Tsuneki leg. /Etizenia, No. 66(II) (1973): p. 119

***Nomada montverna*** 1973 [B1-288158]

PARATYPE ♂. Nurukawa, Aomori Pref., Japan, 1959.5.10, K. Shimoyama leg. /Etizenia, No.66(II) (1973): p. 119

***Nomada montverna*** 1973 [B1-288159]

PARATYPE ♂. Nurukawa, Aomori Pref., Japan, 1959.5.28, K. Shimoyama leg. /Etizenia, No. 66(II) (1973): p. 119

***Nomada montverna*** 1973 [B1-288160]

PARATYPE ♂. Nurukawa, Aomori Pref., Japan, 1960.6.5, K. Shimoyama leg. /Etizenia, No. 66(II) (1973): p. 119

***Nomada montverna*** 1973 [B1-288161]

PARATYPE ♂. Nurukawa, Aomori Pref., Japan, 1959.5.24, K. Shimoyama leg. /Etizenia, No. 66(II) (1973): p. 119

***Nomada muinensis*** 1986 [B1-288162]

HOLOTYPE ♀. Mt. Muine near Sapporo, Hokkaido, Japan, 1959.5.9, T. Nambu leg. /Spec. Publ. Jap. Hymen. Ass., No. 32 (1986): p. 56  
The holotype data conflicts with the published data ("1969.5.9").

***Nomada munakatai*** 1973 [B1-288163]

HOLOTYPE ♀. Matsumae, Hokkaido, Japan, 1966.9.16, M. Munakata leg. /Etizenia, No. 66(I) (1973): p. 39

***Nomada murotai*** 1973 [B1-288164]

HOLOTYPE ♀. Mt. Monju, Fukui Pref., Japan, 1967.4.30, T. Okumura leg. /Etizenia, No. 66(II) (1973): p. 110  
The holotype data conflicts with the published data ("T. Murota leg.!).

***Nomada mutsuensis*** 1986 [B1-288165]

HOLOTYPE ♂. Yasute-yama, Hiraka, Aomori Pref., Japan, 1975.4.24, K. Shimoyama leg. /Spec. Publ. Jap. Hymen. Ass., No. 32 (1986): p. 53

***Nomada mutsuensis*** 1986 [B1-288166]

PARATYPE ♂. Yasute-yama, Hiraka, Aomori Pref., Japan, 1975.4.25, K. Shimoyama leg. /Spec. Publ. Jap. Hymen. Ass., No. 32 (1986): p. 53

*Nomada nanaensis* 1973 [B1-288167]

HOLOTYPE ♂. Nanae, Hokkaido, Japan, 1961.4.28, M. Munakata leg. /Etizenia, No. 66(II) (1973): p. 131  
The genitalia of the holotype are mounted separately on a card attached to the pin on which the specimen is mounted.

*Nomada nunobensis* 1986 [B1-288168]

HOLOTYPE ♀. Nunobe, Niigata Pref., Japan, 1977.6.3, K. Baba leg. /Spec. Publ. Jap. Hymen. Ass., No. 32 (1986): p. 50  
The abdomen of the holotype is mounted separately on a card attached to the pin on which the specimen is mounted.

*Nomada nurukawa* 1973 [B1-288169]

HOLOTYPE ♂. Towada, Aomori Pref., Japan, 1960.6.5, K. Shimoyama leg. /Etizenia, No. 66(II) (1973): p. 135

*Nomada nurukawa* 1973 [B1-288170]

PARATYPE ♂. Towada, Aomori Pref., Japan, 1960.6.5, K. Shimoyama leg. /Etizenia, No. 66(II) (1973): p. 135

*Nomada ohnonis* 1976 [B1-288171]

HOLOTYPE ♀. Sunayama Hills, Fukui Pref., Japan, 1965.5.1, Y. Haneda leg. /Kontyu, Vol. 44(1) (1976): p. 61

*Nomada osimana* 1973 [B1-288174]

HOLOTYPE ♂. Hakodate, Hokkaido, Japan, 1960.4.24, M. Munakata leg. /Etizenia, No. 66(II) (1973): p. 129

*Nomada osimana* 1973 [B1-288175]

PARATYPE ♂. Hakodate, Hokkaido, Japan, 1960.4.24, M. Munakata leg. /Etizenia, No. 66(II) (1973): p. 129

*Nomada osimana* 1973 [B1-288176]

PARATYPE ♂. Hakodate, Hokkaido, Japan, 1960.4.23, M. Munakata leg. /Etizenia, No. 66(II) (1973): p. 129

*Nomada osimana* 1973 [B1-288177]

PARATYPE ♂. Hakodate, Hokkaido, Japan, 1960.4.29, M. Munakata leg. /Etizenia, No. 66(II) (1973): p. 129

*Nomada osimana oirasensis* 1973 [B1-288178]

HOLOTYPE ♀. Towada, Aomori Pref., Japan, 1960.6.5, K. Shimoyama leg. /Etizenia, No. 66(II) (1973): p. 131

*Nomada osimana oirasensis* 1973 [B1-288179]

PARATYPE ♂. Towada, Aomori Pref., Japan, 1960.6.5, K. Shimoyama leg. /Etizenia, No. 66(II) (1973): p. 131

*Nomada osimana oirasensis* 1973 [B1-288180]

PARATYPE ♂. Towada, Aomori Pref., Japan, 1960.6.5, K. Shimoyama leg. /Etizenia, No. 66(II) (1973): p. 131

*Nomada osimana oirasensis* 1973 [B1-288181]

PARATYPE ♂. Towada, Aomori Pref., Japan, 1960.6.5, K. Shimoyama leg. /Etizenia, No. 66(II) (1973): p. 131

*Nomada pacifica* 1973 [B1-288182]

HOLOTYPE ♀. Taniyama, Fukui Pref., Japan, 1972.5.3, K. Tsuneki leg. /Etizenia, No. 66(II) (1973): p. 97

*Nomada panzeri orientis* 1973 [B1-288184]

HOLOTYPE ♀. Sanjuhassha, Fukui Pref., Japan, 1956.5.3, K. Tsuneki leg. /Etizenia, No. 66(I) (1973): p. 68  
The left antenna of the holotype is mounted separately on a card attached to the pin on which the specimen is mounted.

*Nomada panzeri orientis* 1973 [B1-288185]

PARATYPE ♂. Iwaya, Fukui Pref., Japan, 1958.4.11, K. Tsuneki leg. /Etizenia, No. 66(I) (1973): p. 68

*Nomada panzeri orientis* 1973 [B1-288186]

PARATYPE ♀. Sanjuhassha, Fukui Pref., Japan, 1956.5.11, K. Tsuneki leg. /Etizenia, No. 66(I) (1973): p. 68

*Nomada panzeri orientis* 1973 [B1-288187]

PARATYPE ♀. Mt. Hino, Fukui Pref., Japan, 1972.4.29, K. Tsuneki leg. /Etizenia, No. 66(I) (1973): p. 68

*Nomada panzeri orientis* 1973 [B1-288188]

PARATYPE ♀. Sanjuhassha, Fukui Pref., Japan, 1956.5.11, K. Tsuneki leg. /Etizenia, No. 66(I) (1973): p. 68

*Nomada pekingensis* 1986 [B1-288189]

HOLOTYPE ♀. Peking, China, 1939.4.23, K. Tsuneki leg. /Spec. Publ. Jap. Hymen. Ass., No. 32 (1986): p. 32

*Nomada pulawskii* 1973 [B1-288190]

HOLOTYPE ♀. Imajo, Fukui Pref., Japan, 1960.5.17, K. Tsuneki leg. /Etizenia, No. 66(II) (1973): p. 125  
The holotype data conflicts with the published data ("1960.4.19").

- Nomada pulawskii* 1973 [B1-288191]  
PARATYPE ♂. Mt. Somayama, Fukui Pref., Japan, 1960.5.17, K. Tsuneki leg. /Etizenia, No. 66(II) (1973): p. 125
- Nomada rengnio* 1973 [B1-288192]  
HOLOTYPE ♀. Mt. Monju, Fukui Pref., Japan, 1957.4.28, K. Tsuneki leg. /Etizenia, No. 66(II) (1973): p. 91
- Nomada risiriensis* 1976 [B1-288193]  
HOLOTYPE ♂. Is. Risiri, Hokkaido, Japan, 1968.5.12, M. Kudo leg. /Kontyu, Vol. 44(1) (1976): p. 50
- Nomada sabaensis* 1973 [B1-288194]  
HOLOTYPE ♀. Sabae, Fukui Pref., Japan, 1956.4.16, K. Tsuneki leg. /Etizenia, No. 66(II) (1973): p. 112  
The left antenna of the holotype is missing.
- Nomada sakura* 1976 [B1-288195]  
HOLOTYPE ♀. Sakura, Chiba Pref., Japan, 1974.4.2, H. Suda leg. /Kontyu, Vol. 44(2) (1976): p. 150
- Nomada shimoyamai* 1973 [B1-288196]  
HOLOTYPE ♂. Towada, Aomori Pref., Japan, 1960.6.5, K. Shimoyama leg. /Etizenia, No. 66(II) (1973): p. 137  
Currently placed as a synonym of *Nomada osimana oriasenisi* Tsuneki 1973 by Tsuneki (1975).
- Nomada shoyozana* 1986 [B1-288197]  
HOLOTYPE ♂. Mt. Shoyo, Korea, 1942.9.3, K. Tsuneki leg. /Spec. Publ. Jap. Hymen. Ass., No. 32 (1986): p. 34  
The left antenna of the holotype is glued to the data label.
- Nomada silvicola* 1973 [B1-288198]  
HOLOTYPE ♀. Koike, Fukui Pref., Japan, 1955.5.26-28, K. Tsuneki leg. /Etizenia, No. 66(II) (1973): p. 87
- Nomada sudai* 1976 [B1-288200]  
HOLOTYPE ♀. Mt. Uenoyama, Ikao, Gumma Pref., Japan, 1970.5.19, H. Suda leg. /Kontyu, Vol. 44(2) (1976): p. 152
- Nomada sudai* 1976 [B1-288201]  
PARATYPE ♀. Mt. Uenoyama, Ikao, Gumma Pref., Japan, 1970.5.15, H. Suda leg. /Kontyu, Vol. 44(2) (1976): p. 152
- Nomada sunayamana* 1976 [B1-288202]  
HOLOTYPE ♂. Sunayama Hills, Fukui Pref., Japan, 1965.4.6, Y. Haneda leg. /Kontyu, Vol. 44(1) (1976): p. 63  
The genitalia of the holotype are mounted separately on a card attached to the pin on which the specimen is mounted.
- Nomada taicho* 1973 [B1-288203]  
HOLOTYPE. Sanjuhassha, Fukui Pref., Japan, 1956.5.3, K. Tsuneki leg. /Etizenia, No. 66(I) (1973): p. 47
- Nomada taicho* 1973 [B1-288204]  
PARATYPE ♂. Sanjuhassha, Fukui Pref., Japan, 1957.5.6, K. Tsuneki leg. /Etizenia, No. 66(I) (1973): p. 47
- Nomada temmasana* 1986 [B1-288205]  
HOLOTYPE ♀. Mt. Temma, Korea, 1942.8.30, K. Tsuneki leg. /Spec. Publ. Jap. Hymen. Ass., No. 32 (1986): p. 34
- Nomada tiendang* 1986 [B1-288206]  
HOLOTYPE ♀. Tiendang, Peking, China, 1938.7.26, K. Tsuneki leg. /Spec. Publ. Jap. Hymen. Ass., No. 32 (1986): p. 32
- Nomada towada* 1973 [B1-288207]  
HOLOTYPE ♀. Towada, Aomori Pref., Japan, 1959.5.28, K. Shimoyama leg. /Etizenia, No. 66(I) (1973): p. 72
- Nomada tridentata* 1986 [B1-288208]  
HOLOTYPE ♀. Towada, Aomori Pref., Japan, 1975.6.14, K. Shimoyama leg. /Spec. Publ. Jap. Hymen. Ass., No. 32 (1986): p. 49
- Nomada uzenis* 1986 [B1-288209]  
PARATYPE ♀. Iida-machi, Yamagata Pref., Japan, 1977.6.4, K. Baba leg. /Spec. Publ. Jap. Hymen. Ass., No. 32 (1986): p. 49
- Nomada wakasana* 1976 [B1-288210]  
HOLOTYPE ♂. Wakasa, Fukui Pref., Japan, 1974.5.3, H. Kurokawa leg. /Kontyu, Vol. 44(1) (1976): p. 56
- Nomada yagensis* 1973 [B1-288211]  
HOLOTYPE ♀. Shimokita, Aomori Pref., Japan, 1969.6.8, M. Miyoshi leg. /Etizenia, No. 66(II) (1973): p. 95



***Nomada yanoi* 1973 [B1-288212]**

HOLOTYPE ♂. Ohkura, Fukuoka Pref., Japan, 1950.9.10, M. Yano leg. /Etizenia, No. 66(I) (1973): p. 37

***Nomada yanoi* 1973 [B1-288213]**

PARATYPE ♂. Kitagawachi, Tomorogi, Osaka Pref., Japan, 1934.9.24, S. Tamazawa leg. /Etizenia, No. 66(I) (1973): p. 37

***Nomada yasha* 1986 [B1-288214]**

HOLOTYPE ♂. Mt. Yashagatake, Fukui Pref., Japan, 1976, C. Nozaka leg. /Spec. Publ. Jap. Hymen. Ass., No. 32 (1986): p. 36

***Nomada yasha* 1986 [B1-288215]**

PARATYPE ♂. Mt. Yashagatake, Fukui Pref., Japan, 1976, C. Nozaka leg. /Spec. Publ. Jap. Hymen. Ass., No. 32 (1986): p. 36

***Nomada yasha* 1986 [B1-288216]**

PARATYPE ♂. Mt. Yashagatake, Fukui Pref., Japan, 1976.??, ?? leg. /Spec. Publ. Jap. Hymen. Ass., No. 32 (1986): p. 36

This specimen have no date-data and collector name on the label.

***Nomada yasuteyamana* 1986 [B1-288217]**

HOLOTYPE ♂. Yasute-Yama, Aomori Pref., Japan, 1975.4.25, K. Shimoyama leg. /Spec. Publ. Jap. Hymen. Ass., No. 32 (1986): p. 54

The abdomen of the holotype is mounted separately on a card attached to the pin on which the specimen is mounted.

***Nomada yasuteyamana* 1986 [B1-288218]**

PARATYPE ♂. Yasute-Yama, Aomori Pref., Japan, 1975.4.23, K. Shimoyama leg. /Spec. Publ. Jap. Hymen. Ass., No. 32 (1986): p. 54

***Nomada yasuteyamana* 1986 [B1-288219]**

PARATYPE ♂. Yasute-Yama, Aomori Pref., Japan, 1975.4.23, K. Shimoyama leg. /Spec. Publ. Jap. Hymen. Ass., No. 32 (1986): p. 54

***Nomada yunokawana* 1986 [B1-288220]**

HOLOTYPE ♂. Yunokawa, Shimokita Peninsula, Aomori Pref., Japan, 1975.6.3, K. Tsuneki leg. /Spec. Publ. Jap. Hymen. Ass., Vol. 32 (1986): p. 54

***Nomada yunokawana* 1986 [B1-288221]**

PARATYPE ♀. Yunokawa, Shimokita Peninsula, Aomori Pref., Japan, 1975.6.3, K. Tsuneki leg. /Spec. Publ. Jap. Hymen. Ass., Vol. 32 (1986): p. 54

***Pasites maculatus koreanus* 1986 [B1-288222]**

HOLOTYPE ♀. Mt. Shoyo, Keikido, Korea, 1943.9.3, K. Tsuneki leg. /Spec. Publ. Jap. Hymen. Ass., No. 32 (1986): p. 59

***Pasites maculatus koreanus* 1986 [B1-288223]**

PARATYPE ♀. Mt. Shoyo, Keikido, Korea, 1943.9.3, K. Tsuneki leg. /Spec. Publ. Jap. Hymen. Ass., No. 32 (1986): p. 59

***Pasites maculatus koreanus* 1986 [B1-288224]**

PARATYPE ♀. Mt. Shoyo, Keikido, Korea, 1942.8.27, K. Tsuneki leg. /Spec. Publ. Jap. Hymen. Ass., No. 32 (1986): p. 59

***Pasites maculatus pekingensis* 1986 [B1-288225]**

HOLOTYPE ♀. Peking, China, 1938.8.1, K. Tsuneki leg. /Spec. Publ. Jap. Hymen. Ass., No. 32 (1986): p. 58

Family Halictidae

***Sphcodes aino* 1983 [B1-288226]**

HOLOTYPE ♀. Dyozankei, Hokkaido, Japan, 1976.6.8, K. Tsuneki leg. /Spec. Publ. Jap. Hymen. Ass., No. 26 (1983): p. 26

***Sphcodes aino* 1983 [B1-288227]**

PARATYPE ♀. Dyozankei, Hokkaido, Japan, 1976.6.8, K. Tsuneki leg. /Spec. Publ. Jap. Hymen. Ass., No. 26 (1983): p. 26

- Sphecodes akitanus*** 1983 [B1-288228]  
 HOLOTYPE ♂. Nyudoh Promontry, Akita Pref., Japan, 1969.7.31, Y. Haneda leg. /Spec. Publ. Jap. Hymen. Ass., No. 26 (1983): p. 52
- Sphecodes asakura*** 1983 [B1-288229]  
 HOLOTYPE ♂. Ohno, Fukui Pref., Japan, 1959.8.27, K. Tsuneki leg. /Spec. Publ. Jap. Hymen. Ass., No. 26 (1983): p. 16  
 The abdomen of the holotype is mounted separately on a card attached to the pin on which the specimen is mounted. Currently placed as a synonym of *Sphecodes japonicus* Cockerell 1911 by Tsuneki (1983).
- Sphecodes asakura*** 1983 [B1-288230]  
 PARATYPE ♂. Ohtaki-mura, Saitama Pref., Japan, 1974.10.6, Y. Haneda leg. /Spec. Publ. Jap. Hymen. Ass., No. 26 (1983): p. 16  
 Currently placed as a synonym of *Sphecodes japonicus* Cockerell 1911 by Tsuneki (1983).
- Sphecodes awaensis*** 1983 [B1-288231]  
 HOLOTYPE ♀. Mt. Tsurugi, Tokushima Pref., Japan, 1970.7.23, T. Tano leg. /Spec. Publ. Jap. Hymen. Ass., No. 26 (1983): p. 27
- Sphecodes baratonis*** 1983 [B1-288232]  
 HOLOTYPE ♂. Barato, Hokkaido, Japan, 1956.9.17, T. Nambu leg. /Spec. Publ. Jap. Hymen. Ass., No. 26 (1983): p. 34  
 The abdomen of the holotype is mounted separately on a card attached to the pin on which the specimen is mounted.
- Sphecodes bipunctatus*** 1986 [B1-288233]  
 HOLOTYPE ♀. Mt. Shoyo, Seoul, Korea, 1942.8.27, K. Tsuneki leg. /Spec. Publ. Jap. Hymen. Ass., No. 32 (1986): p. 38
- Sphecodes bipunctatus*** 1986 [B1-288234]  
 PARATYPE ♀. Seoul, Korea, 1943.6.20, K. Tsuneki leg. /Spec. Publ. Jap. Hymen. Ass., No. 32 (1986): p. 38
- Sphecodes bipunctatus*** 1986 [B1-288235]  
 PARATYPE ♂. Mt. Shoyo, Seoul, Korea, 1942.9.3, K. Tsuneki leg. /Spec. Publ. Jap. Hymen. Ass., No. 32 (1986): p. 38
- Sphecodes bipunctatus*** 1986 [B1-288236]  
 PARATYPE ♂. Mt. Hokkanzan, Seoul, Korea, 1942.9.6, K. Tsuneki leg. /Spec. Publ. Jap. Hymen. Ass., No. 32 (1986): p. 38
- Sphecodes breviclypeatus*** 1984 [B1-288237]  
 HOLOTYPE. Nishizawa Valley, Yamanashi Pref., Japan, 1980.5.28, H. Suda leg. /Spec. Publ. Jap. Hymen. Ass., No. 30 (1984): p. 7
- Sphecodes chibaensis*** 1984 [B1-288239]  
 HOLOTYPE ♀. Dyonai, Sakura, Chiba Pref., Japan, 1977.4.17, H. Suda leg. /Spec. Publ. Jap. Hymen. Ass., No. 30 (1984): p. 8
- Sphecodes chosensis*** 1986 [B1-288240]  
 HOLOTYPE ♂. Mt. Gaya, Korea, 1985.8.22, T. Tano leg. /Spec. Publ. Jap. Hymen. Ass., No. 32 (1986): p. 42
- Sphecodes coarctatus*** 1986 [B1-288241]  
 HOLOTYPE ♀. Mt. Shoyo, Seoul, Korea, 1943.7.27, K. Tsuneki leg. /Spec. Publ. Jap. Hymen. Ass., No. 32 (1986): p. 39
- Sphecodes convergens*** 1983 [B1-288242]  
 HOLOTYPE ♀. Arashi, Fukui Pref., Japan, 1976.5.9, T. Tano leg. /Spec. Publ. Jap. Hymen. Ass., No. 26 (1983): p. 64  
 The holotype data conflicts with the published data ("1974.6.28").
- Sphecodes convergens*** 1983 [B1-288243]  
 PARATYPE ♀. Koike, Fukui Pref., Japan, 1959.6.2, T. Tano leg. /Spec. Publ. Jap. Hymen. Ass., No. 26 (1983): p. 64
- Sphecodes coptis*** 1983 [B1-288244]  
 HOLOTYPE ♀. Koike, Fukui Pref., Japan, 1973.7.26, K. Tsuneki leg. /Spec. Publ. Jap. Hymen. Ass., No. 26 (1983): p. 29
- Sphecodes crassicornis*** 1983 [B1-288245]  
 HOLOTYPE ♀. Terai, Ishikawa Pref., Japan, 1967.6.14, T. Tano leg. /Spec. Publ. Jap. Hymen. Ass., No. 26 (1983): p. 63
- Sphecodes cristatus pekingensis*** 1986 [B1-288246]  
 HOLOTYPE ♀. Peking, China, 1938.7.10, K. Tsuneki leg. /Spec. Publ. Jap. Hymen. Ass., No. 32 (1986): p. 37

***Sphecodes daisi*** 1983 [B1-288248]

HOLOTYPE ♀. Sanduyhassha, Fukui Pref., Japan, 1958.9.14, K. Tsuneki leg. /Spec. Publ. Jap. Hymen. Ass., No. 26 (1983): p. 70

The holotype has both antennae missing.

***Sphecodes duplipunctatus*** 1983 [B1-288249]

HOLOTYPE ♂. Mt. Akausagi, Fukui Pref., Japan, 1979.9.16, H. Kurokawa leg. /Spec. Publ. Jap. Hymen. Ass., No. 26 (1983): p. 39

The genitalia and remaining abdominal parts of the holotype are mounted separately on a card attached to the pin on which the specimen is mounted.

***Sphecodes dyozankeanus*** 1983 [B1-288250]

HOLOTYPE ♂. Dyozankei, Hokkaido, Japan, 1972.9.9, Y. Haneda leg. /Spec. Publ. Jap. Hymen. Ass., No. 26 (1983): p. 33

***Sphecodes etizenensis*** 1983 [B1-288251]

HOLOTYPE ♀. Sanduyhassha, Fukui Pref., Japan, 1956.4.22, K. Tsuneki leg. /Spec. Publ. Jap. Hymen. Ass., No. 26 (1983): p. 61

The abdomen and left fore wing are glued to the data label. Currently placed as a synonym of *Sphecodes okuyetsu* Tsuneki 1983 by Tsuneki (1984).

***Sphecodes etizenensis*** 1983 [B1-288252]

PARATYPE ♀. Mt. Taniyama, Fukui Pref., Japan, 1972.6.10, K. Tsuneki leg. /Spec. Publ. Jap. Hymen. Ass., No. 26 (1983): p. 61

Currently placed as a synonym of *Sphecodes okuyetsu* Tsuneki 1983 by Tsuneki (1984).

***Sphecodes etizenensis*** 1983 [B1-288253]

PARATYPE ♀. Koike, Fukui Pref., Japan, 1960.8.14, K. Tsuneki leg. /Spec. Publ. Jap. Hymen. Ass., No. 26 (1983): p. 61  
Currently placed as a synonym of *Sphecodes okuyetsu* Tsuneki 1983 by Tsuneki (1984).

***Sphecodes fudzi*** 1983 [B1-288254]

HOLOTYPE ♂. Mt. Fudzi, Narusawa, Yamanashi Pref., Japan, 1980.9.19, H. Suda leg. /Spec. Publ. Jap. Hymen. Ass., No. 26 (1983): p. 45

The genitalia of the holotype are mounted separately on a card attached to the pin on which the specimen is mounted.

***Sphecodes fukuensis*** 1983 [B1-288255]

HOLOTYPE ♂. Imajo, Fukui Pref., Japan, 1981.7.11, T. Murota leg. /Spec. Publ. Jap. Hymen. Ass., No. 26 (1983): p. 44

***Sphecodes gayaensis*** 1986 [B1-288256]

HOLOTYPE ♀. Mt. Gaya, Korea, 1985.8.20-22, T. Tano leg. /Spec. Publ. Jap. Hymen. Ass., No. 32 (1986): p. 42

***Sphecodes hanedai*** 1983 [B1-288257]

HOLOTYPE ♂. Koike, Fukui Pref., Japan, 1975.8.27, Y. Haneda leg. /Spec. Publ. Jap. Hymen. Ass., No. 26 (1983): p. 35  
The genitalia of the holotype are mounted separately on a card attached to the pin on which the specimen is mounted.

***Sphecodes hasshanus*** 1983 [B1-288258]

HOLOTYPE ♀. Sanduyhassha, Fukui Pref., Japan, 1956.4.22, K. Tsuneki leg. /Spec. Publ. Jap. Hymen. Ass., No. 26 (1983): p. 59

***Sphecodes hasshanus*** 1983 [B1-288259]

PARATYPE ♀. Sanduyhassha, Fukui Pref., Japan, 1956.5.11, K. Tsuneki leg. /Spec. Publ. Jap. Hymen. Ass., No. 26 (1983): p. 59

***Sphecodes hatogayus*** 1983 [B1-288260]

HOLOTYPE ♂. Hatogayu, Fukui Pref., Japan, 1973.8.31, K. Tsuneki leg. /Spec. Publ. Jap. Hymen. Ass., No. 26 (1983): p. 18

Currently placed as a synonym of *Sphecodes japonicus* Cockerell 1911 by Tsuneki (1983).

***Sphecodes hatogayus*** 1983 [B1-288261]

PARATYPE ♀. Arashi, Fukui Pref., Japan, 1965.8.4, K. Tsuneki leg. /Spec. Publ. Jap. Hymen. Ass., No. 26 (1983): p. 18  
Currently placed as a synonym of *Sphecodes japonicus* Cockerell 1911 by Tsuneki (1983).

***Sphecodes hatogayus*** 1983 [B1-288262]

PARATYPE ♂. Bunkyo-ku, Tokoyo, Japan, 1930.9, K. Tsuneki leg. /Spec. Publ. Jap. Hymen. Ass., No. 26 (1983): p. 18  
Currently placed as a synonym of *Sphecodes japonicus* Cockerell 1911 by Tsuneki (1983).

***Sphecodes itidyo*** 1983 [B1-288263]

HOLOTYPE ♀. Taniyama, Fukui Pref., Japan, 1973.8.24, K. Tsuneki leg. /Spec. Publ. Jap. Hymen. Ass., No. 26 (1983): p. 23

***Sphecodes itidyo*** 1983 [B1-288264]

PARATYPE ♀. Hatogayu, Fukui Pref., Japan, 1973.7.16, K. Tsuneki leg. /Spec. Publ. Jap. Hymen. Ass., No. 26 (1983): p. 23

***Sphecodes iwatensis*** 1983 [B1-288265]

HOLOTYPE ♀. Takinoue, Iwate Pref., Japan, 1964.7.31, K. Tsuneki leg. /Spec. Publ. Jap. Hymen. Ass., No. 26 (1983): p. 25

The both antennae and right fore wing are glued to the data label.

***Sphecodes izumindus*** 1986 [B1-288266]

HOLOTYPE ♀. Maezaka, Izumi-mura, Fukui Pref., Japan, 1984.7.12, Y. Haneda leg. /Spec. Publ. Jap. Hymen. Ass., No. 32 (1986): p. 45

***Sphecodes kaiensis*** 1983 [B1-288267]

HOLOTYPE ♂. Hirokawara, Yamanashi Pref., Japan, 1969.8.13, Y. Haneda leg. /Spec. Publ. Jap. Hymen. Ass., No. 26 (1983): p. 56

The genitalia, left fore wing and left hind leg of the holotype are mounted separately on a card attached to the pin on which the specimen is mounted.

***Sphecodes kamafuse*** 1983 [B1-288268]

HOLOTYPE ♀. Mt. Kamafuse, Shimokita Peninsula, Aomori Pref., Japan, 1975.5.31, K. Tsuneki leg. /Spec. Publ. Jap. Hymen. Ass., No. 26 (1983): p. 65

The abdomen of the holotype is glued to the data label. The holotype data conflicts with the published data ("1975.6.4").

***Sphecodes kamafuse*** 1983 [B1-288269]

PARATYPE ♀. Mt. Kamafuse, Shimokita Peninsula, Aomori Pref., Japan, 1975.6.4, K. Tsuneki leg. /Spec. Publ. Jap. Hymen. Ass., No. 26 (1983): p. 65

***Sphecodes kisukei*** 1983 [B1-288270]

HOLOTYPE ♀. Koike, Fukui Pref., Japan, 1960.7.19, T. Tano leg. /Spec. Publ. Jap. Hymen. Ass., No. 26 (1983): p. 24

The head and right hind wing of the holotype are glued to the data label.

***Sphecodes kitamius*** 1983 [B1-288271]

HOLOTYPE ♂. Kitami Pass, Hokkaido, Japan, 1977.8.14, T. Murota leg. /Spec. Publ. Jap. Hymen. Ass., No. 26 (1983): p. 55

The abdomen of the holotype is mounted separately on a card attached to the pin on which the specimen is mounted.

***Sphecodes koikensis*** 1983 [B1-288272]

HOLOTYPE ♀. Koike, Fukui Pref., Japan, 1973.7.26, K. Tsuneki leg. /Spec. Publ. Jap. Hymen. Ass., No. 26 (1983): p. 27

The abdomen of the holotype is mounted separately on a card attached to the pin on which the specimen is mounted.

***Sphecodes koikensis*** 1983 [B1-288273]

PARATYPE ♀. Mt. Kammuri, Fukui Pref., Japan, 1974.8.5, T. Tano leg. /Spec. Publ. Jap. Hymen. Ass., No. 26 (1983): p. 27

***Sphecodes laticaudatus*** 1983 [B1-288274]

HOLOTYPE ♀. Mt. Haku, Ishikawa Pref., Japan, 1982.6.19, Y. Haneda leg. /Spec. Publ. Jap. Hymen. Ass., No. 26 (1983): p. 58

***Sphecodes maetai*** 1984 [B1-288275]

HOLOTYPE ♂. Kuriyagawa, Morioka, Iwate Pref., Japan, 1981.8.7, Y. Maeta leg. /Spec. Publ. Jap. Hymen. Ass., No. 30 (1984): p. 5

The abdomen of the holotype is mounted separately on a card attached to the pin on which the specimen is mounted.

***Sphecodes maetai*** 1984 [B1-288276]

PARATYPE ♀. Kuriyagawa, Morioka, Iwate Pref., Japan, 1981.8.7, Y. Maeta leg. /Spec. Publ. Jap. Hymen. Ass., No. 30 (1984): p. 5

- Sphecodes maruyamanus*** 1983 [B1-288277]  
HOLOTYPE ♀. Maruyama, Sapporo, Hokkaido, Japan, 1973.5.27, K. Tsuneki leg. /Spec. Publ. Jap. Hymen. Ass., No. 26 (1983): p. 46
- Sphecodes maruyamanus*** 1983 [B1-288278]  
PARATYPE ♀. Maruyama, Sapporo, Hokkaido, Japan, 1973.5.27, K. Tsuneki leg. /Spec. Publ. Jap. Hymen. Ass., No. 26 (1983): p. 46
- Sphecodes maruyamanus*** 1983 [B1-288279]  
PARATYPE ♀. Maruyama, Sapporo, Hokkaido, Japan, 1973.5.27, K. Tsuneki leg. /Spec. Publ. Jap. Hymen. Ass., No. 26 (1983): p. 46  
The abdomen of the paratype is mounted separately on a card attached to the pin on which the specimen is mounted.
- Sphecodes maruyamanus*** 1983 [B1-288280]  
PARATYPE ♀. Arashi, Ohno, Fukui Pref., Japan, 1975.8.26, Y. Haneda leg. /Spec. Publ. Jap. Hymen. Ass., No. 26 (1983): p. 46  
The genitalia of the paratype are mounted separately on a card attached to the pin on which the specimen is mounted.
- Sphecodes maruyamanus*** 1983 [B1-288281]  
PARATYPE ♀. Mt. Haku, Ishikawa Pref., Japan, 1961.8.13, Y. Haneda leg. /Spec. Publ. Jap. Hymen. Ass., No. 26 (1983): p. 46  
The abdomen of the paratype is mounted separately on a card attached to the pin on which the specimen is mounted.
- Sphecodes murotai*** 1983 [B1-288282]  
HOLOTYPE ♂. Arashiyama, Asahigawa, Hokkaido, Japan, 1977.8.6, T. Murota leg. /Spec. Publ. Jap. Hymen. Ass., No. 26 (1983): p. 49  
The abdomen of the holotype is mounted separately on a card attached to the pin on which the specimen is mounted.
- Sphecodes mutsu*** 1983 [B1-288283]  
HOLOTYPE ♂. Towada, Aomori Pref., Japan, 1957.9.22, K. Shimoyama leg. /Spec. Publ. Jap. Hymen. Ass., No. 26 (1983): p. 22  
The abdomen of the holotype is mounted separately on a card attached to the pin on which the specimen is mounted.
- Sphecodes mutsuoides*** 1984 [B1-288284]  
HOLOTYPE ♂. Mt. Kyogatake, Fukui Pref., Japan, 1982.9.17, Y. Haneda leg. /Spec. Publ. Jap. Hymen. Ass., No. 30 (1984): p. 2  
The genitalia of the holotype are mounted separately on a card attached to the pin on which the specimen is mounted.
- Sphecodes nambui*** 1983 [B1-288285]  
HOLOTYPE ♂. Kodama, Saitama Pref., Japan, 1972.9.22, T. Nambu leg. /Spec. Publ. Jap. Hymen. Ass., No. 26 (1983): p. 13  
The genitalia of the holotype are mounted separately on a card attached to the pin on which the specimen is mounted.
- Sphecodes ohdeyamanus*** 1984 [B1-288286]  
HOLOTYPE ♀. Mt. Ohdeyama, Yamanashi Pref., Japan, 1980.5.23, H. Suda leg. /Spec. Publ. Jap. Hymen. Ass., No. 30 (1984): p. 9
- Sphecodes ohtsuki*** 1984 [B1-288287]  
HOLOTYPE ♀. Tomihama, Ohtsuki City, Yamanashi Pref., Japan, 1979.4.23, H. Suda leg. /Spec. Publ. Jap. Hymen. Ass., No. 30 (1984): p. 9
- Sphecodes okuyetsu*** 1983 [B1-288288]  
HOLOTYPE ♂. Mt. Akasagi, Fukui Pref., Japan, 1978.9.3, T. Murota leg. /Spec. Publ. Jap. Hymen. Ass., No. 26 (1983): p. 42
- Sphecodes rikuchu*** 1983 [B1-288289]  
HOLOTYPE ♀. Takinoue, Iwate Pref., Japan, 1964.7.31, K. Tsuneki leg. /Spec. Publ. Jap. Hymen. Ass., No. 26 (1983): p. 25
- Sphecodes sabulosus*** 1983 [B1-288290]  
HOLOTYPE ♂. Shobugaikē, Ohno, Fukui Pref., Japan, 1969.8.22, Y. Haneda leg. /Spec. Publ. Jap. Hymen. Ass., No. 26 (1983): p. 39  
Currently placed as a synonym of *Sphecodes amakusensis* Yasumatsu & Hirashima 1951 by Tsuneki (1984).

***Sphecodes sapporensis*** 1983 [B1-288291]

HOLOTYPE ♀. Maruyama Hills, Sapporo, Hokkaido, Japan, 1973.5.27, K. Tsuneki leg. /Spec. Publ. Jap. Hymen. Ass., No. 26 (1983): p. 64

The abdomen, right both and left fore wing of the holotype are glued to the data label.

***Sphecodes sapporensis*** 1983 [B1-288292]

PARATYPE ♀. Maruyama Hills, Sapporo, Hokkaido, Japan, 1973.5.25, K. Tsuneki leg. /Spec. Publ. Jap. Hymen. Ass., No. 26 (1983): p. 64

The abdomen of the paratype is glued to the data label.

***Sphecodes sapporensis*** 1983 [B1-288293]

PARATYPE ♀. Maruyama Hills, Sapporo, Hokkaido, Japan, 1973.5.27, K. Tsuneki leg. /Spec. Publ. Jap. Hymen. Ass., No. 26 (1983): p. 64

The abdomen of the paratype is glued to the data label.

***Sphecodes seoulensis*** 1986 [B1-288294]

HOLOTYPE ♀. Keijo, Seoul, Korea, 1942.4.20, K. Tsuneki leg. /Spec. Publ. Jap. Hymen. Ass., No. 32 (1986): p. 40

***Sphecodes shirozui*** 1983 [B1-288295]

HOLOTYPE ♂. Gokasho, Mt. Shirozui, Kumamoto Pref., Japan, 1975.8.2, T. Shirozu leg. /Spec. Publ. Jap. Hymen. Ass., No. 26 (1983): p. 53, p. 66

***Sphecodes shirozui*** 1983 [B1-288297]

PARATYPE ♀. Gokasho, Mt. Shirozui, Kumamoto Pref., Japan, 1975.8.2, T. Shirozu leg. /Spec. Publ. Jap. Hymen. Ass., No. 26 (1983): p. 53, p. 66

***Sphecodes shirozui*** 1983 [B1-288298]

PARATYPE ♂. Gokasho, Mt. Shirozui, Kumamoto Pref., Japan, 1975.8.2, T. Shirozu leg. /Spec. Publ. Jap. Hymen. Ass., No. 26 (1983): p. 53, p. 66

***Sphecodes shirozui*** 1983 [B1-288299]

PARATYPE ♂. Gokasho, Mt. Shirozui, Kumamoto Pref., Japan, 1975.8.2, T. Shirozu leg. /Spec. Publ. Jap. Hymen. Ass., No. 26 (1983): p. 53, p. 66

The genitalia and remaining abdominal parts of the paratype are mounted separately on a card attached to the pin on which the specimen is mounted.

***Sphecodes shirozui*** 1983 [B1-288300]

PARATYPE ♂. Shimokita, Aomori Pref., Japan, 1973.6.4, K. Tsuneki leg. /Spec. Publ. Jap. Hymen. Ass., No. 26 (1983): p. 53, p. 66

***Sphecodes silvicola*** 1983 [B1-288301]

HOLOTYPE ♀. Mt. Iide, Yamagata Pref., Japan, 1976.5.16, K. Tsuneki leg. /Spec. Publ. Jap. Hymen. Ass., No. 26 (1983): p. 60

***Sphecodes silvicola*** 1983 [B1-288302]

PARATYPE ♀. Mt. Iwaki, Aomori Pref., Japan, 1975.5.27, K. Tsuneki leg. /Spec. Publ. Jap. Hymen. Ass., No. 26 (1983): p. 60

***Sphecodes silvicola*** 1983 [B1-288303]

PARATYPE ♀. Maruyama, Sapporo, Hokkaido, Japan, 1976.5.27, K. Tsuneki leg. /Spec. Publ. Jap. Hymen. Ass., No. 26 (1983): p. 60

***Sphecodes sudai*** 1983 [B1-288304]

HOLOTYPE ♂. Mt. Tennyozan, Fukui Pref., Japan, 1978.8.23, H. Suda leg. /Spec. Publ. Jap. Hymen. Ass., No. 26 (1983): p. 38

The abdomen of the holotype are mounted separately on a card attached to the pin on which the specimen is mounted.

***Sphecodes sulcifera*** 1983 [B1-288305]

HOLOTYPE ♂. Mt. Akausagi, Fukui Pref., Japan, 1975.9.14, Y. Haneda leg. /Spec. Publ. Jap. Hymen. Ass., No. 26 (1983): p. 36

***Sphecodes sulcifera*** 1983 [B1-288306]

PARATYPE ♀. Mt. Ninowoji, Niigata Pref., Japan, 1976.5.20, K. Tsuneki leg. /Spec. Publ. Jap. Hymen. Ass., No. 26 (1983): p. 36



***Sphecodes sulcifera*** 1983 [B1-288307]

PARATYPE ♀. Towada, Aomori Pref., Japan, 1958.9.14, K. Shimoyama leg. /Spec. Publ. Jap. Hymen. Ass., No. 26 (1983): p. 36

***Sphecodes taeguensis*** 1986 [B1-288308]

HOLOTYPE ♀. Taegu, Korea, 1985.8.23-24, T. Tano leg. /Spec. Publ. Jap. Hymen. Ass., No. 32 (1986): p. 41

***Sphecodes taicho*** 1983 [B1-288309]

HOLOTYPE ♀. Sanduyhassha, Fukui Pref., Japan, 1958.9.14, K. Tsuneki leg. /Spec. Publ. Jap. Hymen. Ass., No. 26 (1983): p. 70

***Sphecodes tanoi*** 1983 [B1-288310]

HOLOTYPE ♂. Mt. Haku, Ishikawa Pref., Japan, 1959.7.25, T. Tano leg. /Spec. Publ. Jap. Hymen. Ass., No. 26 (1983): p. 49

The abdomen of the holotype is mounted separately on a card attached to the pin on which the specimen is mounted.

***Sphecodes temmasanus*** 1986 [B1-288311]

HOLOTYPE ♀. Mt. Temma, Korea, 1942.8.30, K. Tsuneki leg. /Spec. Publ. Jap. Hymen. Ass., No. 32 (1986): p. 40

***Sphecodes temmasanus*** 1986 [B1-288312]

PARATYPE ♂. Mt. Temma, Korea, 1942.8.30, K. Tsuneki leg. /Spec. Publ. Jap. Hymen. Ass., No. 32 (1986): p. 40

***Sphecodes utinamius*** 1983 [B1-288314]

HOLOTYPE ♂. Hatogayu-Mt. Akausagi, Fukui Pref., Japan, 1973.9.15, K. Tsuneki leg. /Spec. Publ. Jap. Hymen. Ass., No. 26 (1983): p. 12

The right fore wing of the holotype is glued to the data label.

***Sphecodes utinamius*** 1983 [B1-288315]

PARATYPE ♂. Izumi-mura, Fukui Pref., Japan, 1982.8.20, T. Murota leg. /Spec. Publ. Jap. Hymen. Ass., No. 26 (1983): p. 12

The genitalia of the paratype are mounted separately on a card attached to the pin on which the specimen is mounted.

## Superfamily Apoidea (Spheciformes)

### Family Ampulicidae

***Ampulex albobarbata*** 1982 [B1-288316]

HOLOTYPE ♂. Kenting Park, Pingtung Pref., Formosa, 1980.8.11, T. Nambu leg. /Spec. Publ. Jap. Hymen. Ass., No. 23 (1982): p. 18

The left fore wing of the holotype is mounted separately on a card attached to the pin on which the specimen is mounted.

***Ampulex tridentata*** 1982 [B1-288317]

PARATYPE ♀. Is. Ishigaki, Okinawa Pref., Japan, 1978.8.30, T. Nambu leg. /Spec. Publ. Jap. Hymen. Ass., No. 23 (1982): p. 16

### Family Crabronidae

***Crabro aino*** 1947 [B1-288318]

HOLOTYPE ♀. Jozankei, Hokkaido, Japan, 1946.7.17, K. Tsuneki leg. /Jour. Fac. Sci. Hokkaido Univ., Ser. VI, Zool., Vol. 9 (1947): p. 413

Currently placed as a synonym of *Crossocerus malaisei* (Gussakovskij 1932) by Marshakov (1979).

***Crabro calceatus*** 1947 [B1-288319]

HOLOTYPE ♂. Jozankei, Hokkaido, Japan, 1946.8.2, K. Tsuneki leg. /Jour. Fac. Sci. Hokkaido Univ., Ser. VI, Zool., Vol. 9 (1947): p. 430

The holotype data conflicts with the published data ("1946.7.2"). Currently placed as a synonym of *Rhopalum pygidiale* Bohart 1974 by Bohart & Menke (1976).

***Crabro calceatus*** 1947 [B1-288320]

ALLOTYPE ♀. Jozankei, Hokkaido, Japan, 1946.8.2, K. Tsuneki leg. /Jour. Fac. Sci. Hokkaido Univ., Ser. VI, Zool., Vol. 9 (1947): p. 430

The type data conflicts with the published data ("1946.7.2"). Currently placed as a synonym of *Rhopalum pygidiale* Bohart 1974 by Bohart & Menke (1976).

***Crabro flavitarsus*** 1947 [B1-288321]

HOLOTYPE ♂. Sapporo, Hokkaido, Japan, 1946.7.23, K. Tsuneki leg. /Jour. Fac. Sci. Hokkaido Univ., Ser. VI, Zool., Vol. 9 (1947): p. 419

The holotype data conflicts with the published data ("1945.6.23"). Currently placed as *Towada flavitarsus* (Tsuneki 1947) by Bohart & Menke (1976).

***Crabro koreanus*** 1947 [B1-288322]

HOLOTYPE ♀. Syoyo-zan, Keikido, Korea, 1943.6.7, K. Tsuneki leg. /Jour. Fac. Sci. Hokkaido Univ., Ser. VI, Zool., Vol. 9 (1947): p. 287

Currently placed as a synonym of *Crabor ussuriensis* Gussak 1932 by Marshakov (1978).

***Crabro koreanus*** 1947 [B1-288323]

PARATYPE ♀. Syoyo-zan, Keikido, Korea, 1943.6.7, K. Tsuneki leg. /Jour. Fac. Sci. Hokkaido Univ., Ser. VI, Zool., Vol. 9 (1947): p. 287

Currently placed as a synonym of *Crabor ussuriensis* Gussak 1932 by Marshakov (1978).

***Crabro laticornis*** 1947 [B1-288324]

HOLOTYPE ♂. Nansetsu-rei, Korea, 1943.7.23, K. Tsuneki leg. /Jour. Fac. Sci. Hokkaido Univ., Ser. VI, Zool., Vol. 9 (1947): p. 292

Currently placed as *Rhopalum laticornis* (Tsuneki 1947) by Bohart & Menke (1976).

***Crabro laticornis*** 1947 [B1-288325]

ALLOTYPE ♀. Nansetsu-rei, Korea, 1943.8.23, K. Tsuneki leg. /Jour. Fac. Sci. Hokkaido Univ., Ser. VI, Zool., Vol. 9 (1947): p. 292

The type data conflicts with the published data ("1946.7.23"). Currently placed as *Rhopalum laticornis* (Tsuneki 1947) by Bohart & Menke (1976).

***Crabro opacifrons*** 1947 [B1-288326]

HOLOTYPE ♀. Jozankei, Hokkaido, Japan, 1945.9.10, K. Tsuneki leg. /Jour. Fac. Sci. Hokkaido Univ., Ser. VI, Zool., Vol. 9 (1947): p. 423

Currently placed as *Crossocerus opacifrons* (Tsuneki 1947) by Bohart & Menke (1976).

***Crabro uchidai*** 1947 [B1-288327]

HOLOTYPE ♂. Jozankei, Hokkaido, Japan, 1944.7.30, K. Tsuneki leg. /Jour. Fac. Sci. Hokkaido Univ., Ser. VI, Zool., Vol. 9 (1947): p. 421

The head of the holotype is mounted separately on a card attached to the pin on which the specimen is mounted. Currently placed as *Crossocerus uchidai* (Tsuneki 1947) by Bohart & Menke (1976).

***Crabro uchidai*** 1947 [B1-288328]

ALLOTYPE ♀. Sapporo, Hokkaido, Japan, 1944.6.15, K. Tsuneki leg. /Jour. Fac. Sci. Hokkaido Univ., Ser. VI, Zool., Vol. 9 (1947): p. 421

Currently placed as *Crossocerus uchidai* (Tsuneki 1947) by Bohart & Menke (1976).

***Crabro yanoi*** 1947 [B1-288329]

HOLOTYPE ♂. Sapporo, Hokkaido, Japan, 1944.6.7, K. Tsuneki leg. /Jour. Fac. Sci. Hokkaido Univ., Ser. VI, Zool., Vol. 9 (1947): p. 409

Currently placed as *Crossocerus yanoi* (Tsuneki 1947) by Bohart & Menke (1976).

***Crabro yanoi*** 1947 [B1-288330]

ALLOTYPE ♀. Sapporo, Hokkaido, Japan, 1944.6.7, K. Tsuneki leg. /Jour. Fac. Sci. Hokkaido Univ., Ser. VI, Zool., Vol. 9 (1947): p. 409

Currently placed as *Crossocerus yanoi* (Tsuneki 1947) by Bohart & Menke (1976).

***Crabro yasumatsui*** 1947 [B1-288331]

HOLOTYPE ♂. Sapporo, Hokkaido, Japan, 1945.7.27, K. Tsuneki leg. /Jour. Fac. Sci. Hokkaido Univ., Ser. VI, Zool., Vol. 9 (1947): p. 424

Currently placed as *Crossocerus yasumatsui* (Tsuneki 1947) by Bohart & Menke (1976).

***Crabro yasumatsui*** 1947 [B1-288332]

ALLOTYPE ♀. Sapporo, Hokkaido, Japan, 1944.8.1, K. Tsuneki leg. /Jour. Fac. Sci. Hokkaido Univ., Ser. VI, Zool., Vol. 9 (1947): p. 424

Currently placed as *Crossocerus yasumatsui* (Tsuneki 1947) by Bohart & Menke (1976).

- Crossocerus ambiguus hokkaidoensis* 1954 [B1-288333]  
 HOLOTYPE ♀. Sapporo, Hokkaido, Japan, 1944.6.6, K. Tsuneki leg. /Mem. Fac. Lib. Arts, Fukui Univ., Ser II, Nat.Sci., No. 3 (1954): p. 78  
 Currently placed as *Crossocerus annulipes hokkaidoensis* (Tsuneki 1954) by Bohart & Menke (1976).
- Crossocerus babai* 1979 [B1-288334]  
 HOLOTYPE ♂. Wakkanai, Hokkaido, Japan, 1977.7.6, K. Baba leg. /Essa Konchu Dokokai Kaiho, Vol. 50 (1979): p. 11
- Crossocerus breviclypeatus* 1977 [B1-288335]  
 HOLOTYPE ♀. Wushe-Pihu, Nantou Pref., Formosa, 1976.8.21-23, T. Murota leg. /Spec. Publ. Jap. Hymen. Ass., No. 2 (1977): p. 18
- Crossocerus capitosus yamato* 1960 [B1-288336]  
 HOLOTYPE ♀. Nikko, Tochigi Pref., Japan, 1952.7.27, E. Tanaka leg. /Kontyu, Vol. 28(3) (1960): p. 195  
 Raised to *Crossocerus yamato* Tsuneki 1960 by Tsuneki (1977).
- Crossocerus capitosus yamato* 1960 [B1-288337]  
 ALLOTYPE ♂. Nikko, Tochigi Pref., Japan, 1934.5.20, K. Tsuneki leg. /Kontyu, Vol. 28(3) (1960): p. 195  
 Raised to *Crossocerus yamato* Tsuneki 1960 by Tsuneki (1977).
- Crossocerus capitosus yezo* 1960 [B1-288338]  
 HOLOTYPE ♀. Sapporo, Hokkaido, Japan, 1946.6.17, K. Tsuneki leg. /Kontyu, Vol. 28(3) (1960): p. 193
- Crossocerus congener fukuiensis* 1970 [B1-288339]  
 HOLOTYPE ♂. Koike, Fukui Pref., Japan, 1955.5.26-28, K. Tsuneki leg. /Etizenia, No. 50 (1970): p. 2  
 The holotype data conflicts with the published data ("Arashi, Fukui Pref., 1966.6.2"). Raised to *Crossocerus fukuiensis* Tsuneki 1970 by Bohart & Menke (1976).
- Crossocerus dentsukanus* 1976 [B1-288340]  
 HOLOTYPE ♀. Dentsuku, Japan Alps, Japan, 1974.8.3-4, K. Tsuneki leg. /Trans.Shikoku Ent.Soc., Vol. 13 (1976): p. 71
- Crossocerus etizenensis* 1992 [B1-288341]  
 HOLOTYPE ♂. Mushidani, Natasho-mura, Fukui Pref., Japan, 1989.8.19, T. Murota leg. /Spec. Publ. Jap. Hymen. Ass., No. 38 (1992): p. 50
- Crossocerus hakusanus* 1954 [B1-288342]  
 HOLOTYPE ♂. Mt. Haku, Ishikawa Pref., Japan, 1949.6.15, I. Togashi leg. /Mem. Fac. Lib. Arts, Fukui Univ., Ser II, Nat.Sci., No. 3 (1954): p. 74  
 The left fore and hind wings of the holotype are mounted separately on a card attached to the pin on which the specimen is mounted.
- Crossocerus hakusanus sungkangensis* 1982 [B1-288343]  
 HOLOTYPE ♂. Sungkang, Nantou Pref., Formosa, 1980.9.11, K. Tsuneki leg. /Spec. Publ. Jap. Hymen. Ass., No. 23 (1982): p. 29
- Crossocerus heydenii nipponis* 1966 [B1-288344]  
 HOLOTYPE ♀. Mt. Haku, Ishikawa Pref., Japan, 1953.8.2, K. Tsuneki leg. /Life Study (Fukui), Vol. 10 (1966): p. 35
- Crossocerus leclercqi* 1959 [B1-288346]  
 HOLOTYPE ♀. Towada, Aomori Pref., Japan, 1958.8.14, K. Tsuneki leg. /Akitu, Vol. 8 (1959): p. 83  
 The holotype data conflicts with the published data ("1958.8.15"). Currently placed as *Towada leclercqi* (Tsuneki 1959) by Bohart & Menke (1976).
- Crossocerus minamikawai* 1966 [B1-288347]  
 HOLOTYPE ♀. Kanayama-machi, Shizuoka Pref., Japan, 1952.5.3, J. Minamikawa leg. /Life Study (Fukui), Vol. 10 (1966): p. 36
- Crossocerus minor* 1990 [B1-288348]  
 HOLOTYPE ♂. Is. Okinawa, Okinawa Pref., Japan, 1988.8.1, T. Murota leg. /Spec. Publ. Jap. Hymen. Ass., No. 36 (1990): p. 90
- Crossocerus minor* 1990 [B1-288349]  
 PARATYPE ♀. Is. Okinawa, Okinawa Pref., Japan, 1987.8.7, T. Murota leg. /Spec. Publ. Jap. Hymen. Ass., No. 36 (1990): p. 90
- Crossocerus murotai* 1992 [B1-288350]  
 HOLOTYPE ♀. Mushidani, Natasho-mura, Fukui Pref., Japan, 1989.8.19, T. Murota leg. /Spec. Publ. Jap. Hymen. Ass., No. 38 (1992): p. 52

- Crossocerus nambu* 1982 [B1-288351]  
HOLOTYPE ♀. Yingfeng, Nantou Pref., Formosa, 1980.8.19, T. Nambu leg. /Spec. Publ. Jap. Hymen. Ass., No. 23 (1982): p. 33
- Crossocerus nikkoensis* 1955 [B1-288352]  
HOLOTYPE ♂. Nikko, Tochigi Pref., Japan, 1952.6.12, E. Tanaka leg. /Kontyu, Vol. 23(1) (1955): p. 22
- Crossocerus pilicornis* 1977 [B1-288354]  
HOLOTYPE ♂. Hatogayu, Fukui Pref., Japan, 1973.7.16, K. Tsuneki leg. /Spec. Publ. Jap. Hymen. Ass., No. 5 (1977): p. 2
- Crossocerus pilicornis* 1977 [B1-288355]  
PARATYPE ♂. Mt. Haku, Ishikawa Pref., Japan, 1962.7.3-4, K. Tsuneki leg. /Spec. Publ. Jap. Hymen. Ass., No. 5 (1977): p. 2
- Crossocerus rubromaculatus* 1982 [B1-288356]  
HOLOTYPE ♀. Pempuchi, Nantou Pref., Formosa, 1980, T. Nambu leg. /Spec. Publ. Jap. Hymen. Ass., No. 23 (1982): p. 30
- Crossocerus tanakai* 1954 [B1-288357]  
HOLOTYPE ♀. Shobugahama, Nikko, Tochigi Pref., Japan, 1953.9.6, E. Tanaka leg. /Mem. Fac. Lib. Arts, Fukui Univ., Ser II, Nat.Sci., No. 3 (1954): p. 76
- Crossocerus tyuzendzianus* 1954 [B1-288358]  
HOLOTYPE ♀. Shobugahama, Nikko, Tochigi Pref., Japan, 1954.8.10, K. Tsuneki leg. /Mem. Fac. Lib. Arts, Fukui Univ., Ser II, Nat.Sci., No. 4 (1954): p. 46
- Crossocerus uchidai hondonis* 1976 [B1-288359]  
HOLOTYPE ♂. Fukenoyu Spa, Kazono City, Akita Pref., Japan, 1974.8.2, H. Suda leg. /Trans. Shikoku Ent. Soc., Vol. 13 (1976): p. 74
- Crossocerus verhoeffi sudai* 1976 [B1-288360]  
HOLOTYPE ♂. Mt. Daifuku, Kimitsu City, Chiba Pref., Japan, 1974.5.13, H. Suda leg. /Trans. Shikoku Ent. Soc., Vol. 13 (1976): p. 71  
The genitalia of the holotype are mounted separately on a card attached to the pin on which the specimen is mounted.
- Ectemnius cavifrons nipponensis* 1972 [B1-288361]  
HOLOTYPE ♂. Arashi, Fukui Pref., Japan, 1967.9.24, K. Tsuneki leg. /Etizenia, No. 60 (1972): p. 6
- Ectemnius flavohirtus* 1954 [B1-288362]  
HOLOTYPE ♂. Mt. Haku, Ishikawa Pref., Japan, 1953.8.1, S. Fujii leg. /Mem. Fac. Lib. Arts, Fukui Univ., Ser II, Nat.Sci., No. 4 (1954): p. 43
- Ectemnius flavohirtus* 1954 [B1-288363]  
ALLOTYPE ♀. Mt. Haku, Ishikawa Pref., Japan, 1953.7.28-31, K. Tsuneki leg. /Mem. Fac. Lib. Arts, Fukui Univ., Ser II, Nat.Sci., No. 4 (1954): p. 43  
The allotype data conflicts with the published data ("1953.8.1").
- Ectemnius laevidorsis* 1977 [B1-288364]  
HOLOTYPE ♂. Wushe-Pihu, Nantou Pref., Formosa, 1976.8.21-23, T. Murota leg. /Spec. Publ. Jap. Hymen. Ass., No. 2 (1977): p. 16
- Ectemnius rubicola nipponis* 1960 [B1-288365]  
HOLOTYPE ♀. Fukui Pref., Japan, 1954.9.20, K. Tsuneki leg. /Kontyu, Vol. 28(4) (1960): p. 240
- Ectemnius schlettereri ishigakiensis* 1972 [B1-288366]  
HOLOTYPE ♂. Nosoko, Is. Ishigaki, Okinawa Pref., Japan, 1969.8.1, T. Tano leg. /Etizenia, No. 59 (1972): p. 19
- Ectemnius schlettereri japonicus* 1977 [B1-288367]  
HOLOTYPE ♂. Sabae, Fukui Pref., Japan, 1956.8.30, K. Tsuneki leg. /Spec. Publ. Jap. Hymen. Ass., No. 4 (1977): p. 10
- Ectemnius shimoyamai* 1958 [B1-288368]  
HOLOTYPE ♀. Towada, Aomori Pref., Japan, 1957.8.23, K. Shimoyama leg. /Kontyu, vol. 26(4) (1958): p. 198
- Ectemnius spinipes sculpturatus* 1976 [B1-288369]  
HOLOTYPE ♀. Towada, Aomori Pref., Japan, 1954.7.30, K. Tsuneki leg. /Kontyu, Vol. 44(3) (1976): p. 301

- Ectemnius spinipes sculpturatus* 1976 [B1-288370]  
 PARATYPE ♂. Towada, Aomori Pref., Japan, 1964.7.29, K. Tsuneki leg. /Kontyu, Vol. 44(3) (1976): p. 301
- Lestica hentona* 1990 [B1-288371]  
 HOLOTYPE ♂. Is. Okinawa, Okinawa Pref., Japan, 1987.8.7, T. Murota leg. /Spec. Publ. Jap. Hymen. Ass., No. 36 (1990): p. 95
- Lestica hentona* 1990 [B1-288372]  
 PARATYPE ♀. Is. Okinawa, Okinawa Pref., Japan, 1987.8.7, T. Murota leg. /Spec. Publ. Jap. Hymen. Ass., No. 36 (1990): p. 95
- Lestica okinawana* 1990 [B1-288373]  
 HOLOTYPE ♂. Is. Okinawa, Okinawa Pref., Japan, 1988.8.12, T. Murota leg. /Spec. Publ. Jap. Hymen. Ass., No. 36 (1990): p. 93
- Lestica okinawana* 1990 [B1-288374]  
 PARATYPE ♀. Is. Okinawa, Okinawa Pref., Japan, 1988.8.12, T. Murota leg. /Spec. Publ. Jap. Hymen. Ass., No. 36 (1990): p. 93
- Lestica rufigaster* 1984 [B1-288375]  
 HOLOTYPE ♂. Hahadzima, Is. Ogasawaras, Tokyo, Japan, 1979.6.22, A. Shimizu leg. /Spec. Publ. Jap. Hymen. Ass., No. 28 (1984): p. 7
- Liris hanedai* 1971 [B1-288376]  
 HOLOTYPE ♂. Chuchi, Chiai Pref., Formosa, 1970.8.2, Y. Haneda leg. /Etizenia, No. 55 (1971): p. 4  
 The genitalia of the holotype are mounted separately on a card attached to the pin on which the specimen is mounted.
- Liris iriomotensis* 1972 [B1-288377]  
 HOLOTYPE ♂. Is. Iriomote, Okinawa Pref., Japan, 1969.8.2, T. Tano leg. /Etizenia, No. 59 (1972): p. 17  
 The abdomen, right fore and hind wings and genitalia are mounted separately on a card on which the specimen is mounted.
- Liris subtessellatus ogasawarae* 1984 [B1-288378]  
 HOLOTYPE ♀. Is. Ogasawara, Tokyo, Japan, 179.6.22, A. Shimizu leg. /Spec. Publ. Jap. Hymen. Ass., No. 28 (1984): p. 3
- Lyroda fukuensis* 1983 [B1-288379]  
 HOLOTYPE ♂. Hossaka, Fukui Pref., Japan, 1962.9.7, K. Tsuneki leg. /Spec. Publ. Jap. Hymen. Ass., No. 25 (1983): p. 61  
 The genitalia and remaining abdominal parts of the holotype are mounted separately on a card attached to the pin on which the specimen is mounted.
- Nitela ohgushii* 1956 [B1-288380]  
 HOLOTYPE ♀. Is. Koshima, Miyazaki Pref., Japan, 1953.7.22, K. Tsuneki leg. /Akitu, Vol. 5 (1956): p. 34
- Nitela yasumatsui* 1956 [B1-288381]  
 HOLOTYPE ♀. Koike, Fukui Pref., Formosa, 1955.7.28, K. Tsuneki leg. /Akitu, Vol. 5 (1956): p. 34
- Nitela yasumatsui* 1956 [B1-288382]  
 ALLOTYPE ♂. Koike, Fukui Pref., Formosa, 1954.8.4, K. Tsuneki leg. /Akitu, Vol. 5 (1956): p. 34
- Nitela yasumatsui taiwana* 1982 [B1-288383]  
 HOLOTYPE ♀. Mt. Ali, Formosa, 1980.8.2, M. Terayama leg. /Spec. Publ. Jap. Hymen. Ass., No. 23 (1982): p. 28
- Oxybelus nipponicus* 1966 [B1-288384]  
 HOLOTYPE ♀. Niigata Pref., Japan, 1965.8.14, H. Itami leg. /Etizenia, No. 16 (1966): p. 3  
 The holotype data conflicts with the published data ("1965.7.24").
- Oxybelus sakuranus* 1966 [B1-288385]  
 HOLOTYPE ♀. Sakurazawa, Saitama Pref., Japan, 1930.8, K. Tsuneki leg. /Etizenia, No. 16 (1966): p. 7  
 The head and left hind leg of the holotype are mounted separately on a card attached to the pin on which the specimen is mounted. Currently placed as a synonym of *Oxybelus lewisi* Cameron 1890 by Bohart & Menke (1976).
- Pison hahadzimaense* 1984 [B1-288386]  
 HOLOTYPE ♂. Hahadzima, Is. Ogasawaras, Tokyo, Japan, 1979.6.23, A. Shimizu leg. /Spec. Publ. Jap. Hymen. Ass., No. 28 (1984): p. 5

***Rhopalum ataiyal*** 1982 [B1-288387]

HOLOTYPE ♂. Pempuchi valley, Nantou Pref., Formosa, 1980.8.18, T. Nambu leg. /Spec. Publ. Jap. Hymen. Ass., No. 23 (1982): p. 34

***Rhopalum ebetsuense*** 1952 [B1-288388]

HOLOTYPE ♂. Ebetsu, Hokkaido, Japan, 1947.8.16, M. Munakata leg. /Jour. Fac. Sci. Hokkaido Univ., Ser. VI, Zool., Vol. 11 (1952): p. 120

***Rhopalum guttatum*** 1955 [B1-288389]

HOLOTYPE ♀. Koike, Fukui Pref., Japan, 1954.7.31, K. Tsuneki leg. /Kontyu, Vol. 23(3) (1955): p. 105  
The holotype data conflicts with the published data ("1954.8.31").

***Rhopalum hakodatense*** 1960 [B1-288390]

HOLOTYPE ♀. Hakodate, Hokkaido, Japan, 1952.8.28, M. Munakata leg. /Akitu, Vol. 9 (1960): p. 51

***Rhopalum hanedai*** 1973 [B1-288391]

HOLOTYPE ♀. Ohno, Fukui Pref., Japan, 1972.7.31, Y. Haneda leg. /Etizenia, No. 65 (1973): p. 21

***Rhopalum hanedai*** 1973 [B1-288392]

PARATYPE ♀. Ohno, Fukui Pref., Japan, 1972.8.6, Y. Haneda leg. /Etizenia, No. 65 (1973): p. 21

***Rhopalum kuwayamai nikkoense*** 1956 [B1-288393]

HOLOTYPE ♀. Shobugahama, Nikko, Tochigi Pref., Japan, 1953.9.6, E. Tanaka leg. /Akitu, Vol. 5 (1956): p. 67  
The head and abdomen of the holotype are mounted separately on a card attached to the pin on which the specimen is mounted.

***Rhopalum nipponicum hokkaidense*** 1952 [B1-288394]

HOLOTYPE ♀. Sapporo, Hokkaido, Japan, ????.???.?, K. Tsuneki leg. /Jour. Fac. Sci. Hokkaido Univ., Ser. VI, Zool., Vol. 11 (1952): p. 123  
This specimen have no date-data label.

***Rhopalum okinawanum*** 1990 [B1-288395]

HOLOTYPE ♀. Is. Okinawa, Okinawa Pref., Japan, 1988.8.5, T. Murota leg. /Spec. Publ. Jap. Hymen. Ass., No. 36 (1990): p. 97

***Rhopalum succineicollarum*** 1952 [B1-288396]

HOLOTYPE ♀. Sapporo, Hokkaido, Japan, 1951.8.18, K. Tsuneki leg. /Jour. Fac. Sci. Hokkaido Univ., Ser. VI, Zool., Vol. 11 (1952): p. 120

***Rhopalum venustum*** 1955 [B1-288397]

HOLOTYPE ♀. Koike, Fukui Pref., Japan, 1954.8.4, K. Tsuneki leg. /Kontyu, Vol.23(3) (1955): p. 107

***Rhopalum venustum*** 1955 [B1-288398]

ALLOTYPE ♂. Koike, Fukui Pref., Japan, 1954.8.4, K. Tsuneki leg. /Kontyu, Vol.23(3) (1955): p. 107

***Rhopalum watanabei*** 1952 [B1-288399]

HOLOTYPE ♂. Jozankei, Hokkaido, Japan, 1948.8.10, K. Tsuneki leg. /Jour. Fac. Sci. Hokkaido Univ., Ser. VI, Zool., Vol. 11 (1952): p. 124

***Rhopalum watanabei*** 1952 [B1-288400]

ALLOTYPE ♀. Jozankei, Hokkaido, Japan, 1948.8.10, K. Tsuneki leg. /Jour. Fac. Sci. Hokkaido Univ., Ser. VI, Zool., Vol. 11 (1952): p. 124

***Tachysphex nigricolor lanhsuensis*** 1977 [B1-288401]

HOLOTYPE ♀. Hungtou, Lan-hsu, Formosa, 1976.8.6-9, T. Murota leg. /Spec. Publ. Jap. Hymen. Ass., No. 2 (1977): p. 6

***Tachysphex sinensis yaeyamanus*** 1972 [B1-288402]

HOLOTYPE ♂. Is. Iriomote, Okinawa Pref., Japan, 1963.5.24, T. Haitani leg. /Etizenia, No. 59 (1972): p. 18

***Tachysphex tinctipennis titidzimaensis*** 1984 [B1-288403]

HOLOTYPE ♂. Chichidzima, Is. Ogasawaras, Tokyo, Japan, 1983.8.9, T. Nambu leg. /Spec. Publ. Jap. Hymen. Ass., No. 28 (1984): p. 4

The genitalia of the holotype are mounted separately on a card attached to the pin on which the specimen is mounted.

***Tachytes fruticis*** 1964 [B1-288404]

HOLOTYPE ♂. Hatogayu, Fukui Pref., Japan, 1961.8.27, K. Tsuneki leg. /Etizenia, No. 5 (1964): p. 8



***Tachytes latifrons*** 1964 [B1-288405]

HOLOTYPE ♂. Fukui Pref., Japan, 1959.7.12, K. Tsuneki leg. /Etizenia, No. 5 (1964): p. 9

***Tachytes nipponicus*** 1964 [B1-288406]

HOLOTYPE ♂. Fukui Pref., Japan, 1954.9.11, K. Tsuneki leg. /Etizenia, No. 5 (1964): p. 6  
The holotype data conflicts with the published data ("1963.10.14").

***Trypoxylon amamiense*** 1964 [B1-288407]

HOLOTYPE ♂. Akaogi, Is. Amami, Japan, 1961.7.7, K. Tsuneki leg. /Etizenia, No. 6 (1964): p. 2  
The genitalia of the holotype are mounted separately on a card attached to the pin on which the specimen is mounted.  
Down grade to *Trypoxylon formosicola amamiense* Tsuneki 1964 by Tsuneki (1981).

***Trypoxylon ambiguum*** 1956 [B1-288408]

HOLOTYPE ♂. Ohno, Fukui Pref., Japan, 1954.6.18, K. Tsuneki leg. /Mem. Fac. Lib. Arts, Fukui Univ., Ser II, Nat.Sci., No. 6 (1956): p. 21

***Trypoxylon chosenense*** 1956 [B1-288409]

HOLOTYPE ♀. Mt. Shoyo, Keikido, Korea, 1943.9.17, K. Tsuneki leg. /Mem. Fac. Lib. Arts, Fukui Univ., Ser II, Nat.Sci., No. 6 (1956): p. 25

***Trypoxylon clavicerum exiguum*** 1956 [B1-288410]

HOLOTYPE ♀. Yashirodani, Fukui Pref., Japan, 1954.5.29, K. Tsuneki leg. /Mem. Fac. Lib. Arts, Fukui Univ., Ser II, Nat.Sci., No. 6 (1956): p. 37  
Raised to *Trypoxylon exiguum exiguum* Tsuneki 1956 by Antropov (1986).

***Trypoxylon dubiosum*** 1964 [B1-288411]

HOLOTYPE ♂. Shimmura, Is. Amami, Kagoshima Pref., Japan, 1961.6.27, K. Tsuneki leg. /Etizenia, No. 6 (1964): p. 4  
Currently placed as a synonym of *Trypoxylon thaianum* Tsuneki 1961 by Tsuneki (1978).

***Trypoxylon figulus koma*** 1956 [B1-288412]

HOLOTYPE ♀. Kodai-san, Korea, 1943.6.24, K. Tsuneki leg. /Mem. Fac. Lib. Arts, Fukui Univ., Ser II, Nat.Sci., No. 6 (1956): p. 28  
Currently placed as a synonym of *Trypoxylon minus* de Beaumont 1945 by Pulawski (1984). Raised to *Trypoxylon koma* Tsuneki 1956 by Antropov (1987).

***Trypoxylon figulus yezo*** 1956 [B1-288413]

HOLOTYPE ♀. Jozankei, Hokkaido, Japan, 1952.8.9, K. Tsuneki leg. /Mem. Fac. Lib. Arts, Fukui Univ., Ser II, Nat.Sci., No. 6 (1956): p. 29  
Currently placed as a synonym of *Trypoxylon figulus* (Linnaeus 1758) by Pulawski (1975).

***Trypoxylon frigidum yamatonis*** 1981 [B1-288414]

HOLOTYPE ♂. Japan Alps, Japan, 1974.8.3-4, K. Tsuneki leg. /Spec. Publ. Jap. Hymen. Ass., No. 17 (1981): p. 23  
The genitalia of the holotype are mounted separately on a card attached to the pin on which the specimen is mounted.  
Currently placed as a synonym of *Trypoxylon cornutum* Gussakovskij 1932 by Antropov (1987).

***Trypoxylon fronticorne seoulense*** 1981 [B1-288415]

HOLOTYPE ♀. Seoul, Korea, 1943.5.22, K. Tsuneki leg. /Spec. Publ. Jap. Hymen. Ass., No. 17 (1981): p. 30

***Trypoxylon kodamanum*** 1972 [B1-288416]

HOLOTYPE ♂. Kodama, Saitama Pref., Japan, 1971.8.21, T. Nambu leg. /Etizenia, No. 59 (1972): p. 9

***Trypoxylon koikense*** 1956 [B1-288417]

HOLOTYPE ♀. Koike, Fukui Pref., Japan, 1955.7.29, K. Tsuneki leg. /Mem. Fac. Lib. Arts, Fukui Univ., Ser II, Nat.Sci., No. 6 (1956): p. 35

***Trypoxylon koikense*** 1956 [B1-288418]

ALLOTYPE ♂. Koike, Fukui Pref., Japan, 1955.7.29, K. Tsuneki leg. /Mem. Fac. Lib. Arts, Fukui Univ., Ser II, Nat.Sci., No. 6 (1956): p. 35

***Trypoxylon konosuense*** 1968 [B1-288419]

HOLOTYPE ♀. Konosu, Saitama Pref., Japan, 1962.6.22, T. Nambu leg. /Etizenia, No. 27 (1968): p. 3

***Trypoxylon mishimaensis*** 1986 [B1-288420]

HOLOTYPE ♂. Mishima, Shizuoka Pref., Japan, 1985.5.12, K. Tsuneki leg. /Spec. Publ. Jap. Hymen. Ass., No. 32 (1986): p. 28

*Trypoxylon monticola* 1956 [B1-288421]

HOLOTYPE ♀. Senjugahama, Nikko, Japan, 1955.8.10, K. Tsuneki leg. /Mem. Fac. Lib. Arts, Fukui Univ., Ser II, Nat.Sci., No. 6 (1956): p. 34

*Trypoxylon nipponicum* 1956 [B1-288422]

HOLOTYPE ♀. Fudodo, Fukui Pref., Japan, 1954.6.12, K. Tsuneki leg. /Mem. Fac. Lib. Arts, Fukui Univ., Ser II, Nat.Sci., No. 6 (1956): p. 18

*Trypoxylon pennsylvanicum japonense* 1956 [B1-288423]

HOLOTYPE ♀. Sanduyhassha, Fukui Pref., Japan, 1955.9.25, K. Tsuneki leg. /Mem. Fac. Lib. Arts, Fukui Univ., Ser II, Nat.Sci., No. 6 (1956): p. 29

Currently placed as a synonym of *Trypoxylon fronticorne* Gussakovskij 1936 by Tsuneki (1979).

*Trypoxylon pennsylvanicum japonense* 1956 [B1-288429]

PARATYPE ♂. Sanduyhassha, Fukui Pref., Japan, 1955.9.29, K. Tsuneki leg. /Mem. Fac. Lib. Arts, Fukui Univ., Ser II, Nat.Sci., No. 6 (1956): p. 29

Currently placed as a synonym of *Trypoxylon fronticorne* Gussakovskij 1936 by Tsuneki (1979).

*Trypoxylon pennsylvanicum japonense* 1956 [B1-288430]

PARATYPE ♀. Sanduyhassha, Fukui Pref., Japan, 1955.9.29, K. Tsuneki leg. /Mem. Fac. Lib. Arts, Fukui Univ., Ser II, Nat.Sci., No. 6 (1956): p. 29

Currently placed as a synonym of *Trypoxylon fronticorne* Gussakovskij 1936 by Tsuneki (1979).

*Trypoxylon pennsylvanicum japonense* 1956 [B1-288431]

PARATYPE ♀. Fukui Pref., Japan, 1954.5.20, K. Tsuneki leg. /Mem. Fac. Lib. Arts, Fukui Univ., Ser II, Nat.Sci., No. 6 (1956): p. 29

Currently placed as a synonym of *Trypoxylon fronticorne* Gussakovskij 1936 by Tsuneki (1979).

*Trypoxylon pennsylvanicum japonense* 1956 [B1-288432]

PARATYPE ♀. Katsuyama, Fukui Pref., Japan, 1955.6.1, K. Tsuneki leg. /Mem. Fac. Lib. Arts, Fukui Univ., Ser II, Nat.Sci., No. 6 (1956): p. 29

Currently placed as a synonym of *Trypoxylon fronticorne* Gussakovskij 1936 by Tsuneki (1979).

*Trypoxylon pennsylvanicum japonense* 1956 [B1-288434]

PARATYPE ♀. Fukui Pref., Japan, 1955.5.9, K. Tsuneki leg. /Mem. Fac. Lib. Arts, Fukui Univ., Ser II, Nat.Sci., No. 6 (1956): p. 29

Currently placed as a synonym of *Trypoxylon fronticorne* Gussakovskij 1936 by Tsuneki (1979).

*Trypoxylon pennsylvanicum japonense* 1956 [B1-288435]

PARATYPE ♂. Onoshi, Fukui Pref., Japan, 1955.6.13, K. Tsuneki leg. /Mem. Fac. Lib. Arts, Fukui Univ., Ser II, Nat.Sci., No. 6 (1956): p. 29

Currently placed as a synonym of *Trypoxylon fronticorne* Gussakovskij 1936 by Tsuneki (1979).

*Trypoxylon pennsylvanicum japonense* 1956 [B1-288436]

PARATYPE ♀. Onoshi, Fukui Pref., Japan, 1954.9.28, K. Tsuneki leg. /Mem. Fac. Lib. Arts, Fukui Univ., Ser II, Nat.Sci., No. 6 (1956): p. 29

Currently placed as a synonym of *Trypoxylon fronticorne* Gussakovskij 1936 by Tsuneki (1979).

*Trypoxylon pennsylvanicum japonense* 1956 [B1-288437]

PARATYPE ♀. Hossaka, Fukui Pref., Japan, 1955.9.17, K. Tsuneki leg. /Mem. Fac. Lib. Arts, Fukui Univ., Ser II, Nat.Sci., No. 6 (1956): p. 29

Currently placed as a synonym of *Trypoxylon fronticorne* Gussakovskij 1936 by Tsuneki (1979).

*Trypoxylon pennsylvanicum japonense* 1956 [B1-288438]

PARATYPE ♀. Katsuyama, Fukui Pref., Japan, 1955.5.8, K. Tsuneki leg. /Mem. Fac. Lib. Arts, Fukui Univ., Ser II, Nat.Sci., No. 6 (1956): p. 29

Currently placed as a synonym of *Trypoxylon fronticorne* Gussakovskij 1936 by Tsuneki (1979).

*Trypoxylon pennsylvanicum japonense* 1956 [B1-288439]

PARATYPE ♀. Katsuyama, Fukui Pref., Japan, 1955.6.1, K. Tsuneki leg. /Mem. Fac. Lib. Arts, Fukui Univ., Ser II, Nat.Sci., No. 6 (1956): p. 29

Currently placed as a synonym of *Trypoxylon fronticorne* Gussakovskij 1936 by Tsuneki (1979).

***Trypoxylon pennsylvanicum japonense* 1956 [B1-288440]**

PARATYPE ♀. Katsuyama, Fukui Pref., Japan, 1955.6.1, K. Tsuneki leg. /Mem. Fac. Lib. Arts, Fukui Univ., Ser II, Nat.Sci., No. 6 (1956): p. 29

Currently placed as a synonym of *Trypoxylon fronticorne* Gussakovskij 1936 by Tsuneki (1979).

***Trypoxylon pennsylvanicum japonense* 1956 [B1-288441]**

PARATYPE ♀. Katsuyama, Fukui Pref., Japan, 1955.5.22, K. Tsuneki leg. /Mem. Fac. Lib. Arts, Fukui Univ., Ser II, Nat.Sci., No. 6 (1956): p. 29

Currently placed as a synonym of *Trypoxylon fronticorne* Gussakovskij 1936 by Tsuneki (1979).

***Trypoxylon pennsylvanicum japonense* 1956 [B1-288442]**

PARATYPE ♀. Katsuyama, Fukui Pref., Japan, 1955.5.22, K. Tsuneki leg. /Mem. Fac. Lib. Arts, Fukui Univ., Ser II, Nat.Sci., No. 6 (1956): p. 29

Currently placed as a synonym of *Trypoxylon fronticorne* Gussakovskij 1936 by Tsuneki (1979).

***Trypoxylon pennsylvanicum japonense* 1956 [B1-288443]**

PARATYPE ♀. Katsuyama, Fukui Pref., Japan, 1955.6.1, K. Tsuneki leg. /Mem. Fac. Lib. Arts, Fukui Univ., Ser II, Nat.Sci., No. 6 (1956): p. 29

Currently placed as a synonym of *Trypoxylon fronticorne* Gussakovskij 1936 by Tsuneki (1979).

***Trypoxylon pennsylvanicum japonense* 1956 [B1-288444]**

PARATYPE ♂. Torigoe, Ishikawa Pref., Japan, 1955.7.3, I. Togashi leg. /Mem. Fac. Lib. Arts, Fukui Univ., Ser II, Nat.Sci., No. 6 (1956): p. 29

Currently placed as a synonym of *Trypoxylon fronticorne* Gussakovskij 1936 by Tsuneki (1979).

***Trypoxylon pennsylvanicum japonense* 1956 [B1-288446]**

PARATYPE ♂. Jozankei, Hokkaido, Japan, ????.??.?, K. Tsuneki leg. /Mem. Fac. Lib. Arts, Fukui Univ., Ser II, Nat.Sci., No. 6 (1956): p. 29

This specimen have no date-data label. The head of the paratype is missing. Currently placed as a synonym of *Trypoxylon fronticorne* Gussakovskij 1936 by Tsuneki (1979).

***Trypoxylon pennsylvanicum japonense* 1956 [B1-288447]**

PARATYPE ♂. Noporo, Hokkaido, Japan, 1946.8.4, K. Tsuneki leg. /Mem. Fac. Lib. Arts, Fukui Univ., Ser II, Nat.Sci., No. 6 (1956): p. 29

Currently placed as a synonym of *Trypoxylon fronticorne* Gussakovskij 1936 by Tsuneki (1979).

***Trypoxylon pennsylvanicum japonense* 1956 [B1-288448]**

PARATYPE ♀. Noporo, Hokkaido, Japan, 1946.8.4, K. Tsuneki leg. /Mem. Fac. Lib. Arts, Fukui Univ., Ser II, Nat.Sci., No. 6 (1956): p. 29

Currently placed as a synonym of *Trypoxylon fronticorne* Gussakovskij 1936 by Tsuneki (1979).

***Trypoxylon pennsylvanicum japonense* 1956 [B1-288449]**

PARATYPE ♂. Jozankei, Hokkaido, Japan, ????.??.?, K. Tsuneki leg. /Mem. Fac. Lib. Arts, Fukui Univ., Ser II, Nat.Sci., No. 6 (1956): p. 29

This specimen have no date-data label. Currently placed as a synonym of *Trypoxylon fronticorne* Gussakovskij 1936 by Tsuneki (1979).

***Trypoxylon pennsylvanicum japonense* 1956 [B1-288450]**

PARATYPE ♀. Jozankei, Hokkaido, Japan, ????.??.?, K. Tsuneki leg. /Mem. Fac. Lib. Arts, Fukui Univ., Ser II, Nat.Sci., No. 6 (1956): p. 29

This specimen have no date-data label. Currently placed as a synonym of *Trypoxylon fronticorne* Gussakovskij 1936 by Tsuneki (1979).

***Trypoxylon pennsylvanicum japonense* 1956 [B1-288451]**

PARATYPE ♀. Sapporo, Hokkaido, Japan, 1944.6.7, K. Tsuneki leg. /Mem. Fac. Lib. Arts, Fukui Univ., Ser II, Nat.Sci., No. 6 (1956): p. 29

Currently placed as a synonym of *Trypoxylon fronticorne* Gussakovskij 1936 by Tsuneki (1979).

***Trypoxylon pennsylvanicum japonense* 1956 [B1-288452]**

PARATYPE ♀. Jozankei, Hokkaido, Japan, ????.??.?, K. Tsuneki leg. /Mem. Fac. Lib. Arts, Fukui Univ., Ser II, Nat.Sci., No. 6 (1956): p. 29

This specimen have no date-data label. Currently placed as a synonym of *Trypoxylon fronticorne* Gussakovskij 1936 by Tsuneki (1979).

*Trypoxylon pennsylvanicum japonense* 1956 [B1-288453]

PARATYPE ♀. Hakodate, Hokkaido, Japan, 1947.10.5, K. Tsuneki leg. /Mem. Fac. Lib. Arts, Fukui Univ., Ser II, Nat.Sci., No. 6 (1956): p. 29

Currently placed as a synonym of *Trypoxylon fronticorne* Gussakovskij 1936 by Tsuneki (1979).

*Trypoxylon pennsylvanicum japonense* 1956 [B1-288454]

PARATYPE ♀. Utsunomiya, Tochigi Pref., Japan, 1936.10.23, K. Tsuneki leg. /Mem. Fac. Lib. Arts, Fukui Univ., Ser II, Nat.Sci., No. 6 (1956): p. 29

Currently placed as a synonym of *Trypoxylon fronticorne* Gussakovskij 1936 by Tsuneki (1979).

*Trypoxylon pennsylvanicum japonense* 1956 [B1-288455]

PARATYPE ♀. Mt. Haku, Ishikawa Pref., Japan, 1955.7.30, K. Tsuneki leg. /Mem. Fac. Lib. Arts, Fukui Univ., Ser II, Nat.Sci., No. 6 (1956): p. 29

Currently placed as a synonym of *Trypoxylon fronticorne* Gussakovskij 1936 by Tsuneki (1979).

*Trypoxylon pulawskii* 1956 [B1-288456]

HOLOTYPE ♀. Utsunomiya, Japan, 1937.10.7, K. Tsuneki leg. /Mem. Fac. Lib. Arts, Fukui Univ., Ser II, Nat.Sci., No. 6 (1956): p. 22

Currently placed as a synonym of *Trypoxylon errans* Saussure 1867 by Tsuneki (1981).

*Trypoxylon regium hatogayuum* 1956 [B1-288457]

HOLOTYPE ♀. Hatogayu, Fukui Pref., Japan, 1955.8.10, K. Tsuneki leg. /Mem. Fac. Lib. Arts, Fukui Univ., Ser II, Nat.Sci., No. 6 (1956): p. 17

*Trypoxylon rufiventre* 1990 [B1-288458]

HOLOTYPE ♀. Is. Okinawa, Okinawa Pref., Japan, 1988.8.14, T. Murota leg. /Spec. Publ. Jap. Hymen. Ass., No. 36 (1990): p. 85

*Trypoxylon ryukyuense* 1966 [B1-288459]

HOLOTYPE ♀. Is. Amami-Oshima, Kagoshima Pref., Japan, 1961.6.26, K. Tsuneki leg. /Etizenia, No. 13 (1966): p. 9

*Trypoxylon saitamaense* 1973 [B1-288460]

HOLOTYPE ♂. Kohnosu, Saitama Pref., Japan, 1972.6.7, T. Nambu leg. /Etizenia, No. 65 (1973): p. 13

The genitalia of the holotype are mounted separately on a card attached to the pin on which the specimen is mounted. Currently placed as a synonym of *Trypoxylon errans* Saussure 1867 by Tsuneki (1981).

*Trypoxylon sapporoense* 1960 [B1-288461]

HOLOTYPE ♂. Sapporo, Hokkaido, Japan, 1958.7.6, K. Kamijo leg. /Kontyu, Vol. 28(4) (1960): p. 241

*Trypoxylon shimoyamai* 1958 [B1-288462]

HOLOTYPE ♀. Towada, Aomori Pref., Japan, 1957.9.21, K. Shimoyama leg. /Akitu, Vol. 7 (1958): p. 7

The abdomen of the holotype is mounted separately on the card on which the specimen is mounted.

## Family Nyssonidae

*Alysson japonicus* 1977 [B1-288464]

HOLOTYPE ♂. Mt. Haku, near Ichinose, Ishikawa Pref., Japan, 1956.7.29, K. Tsuneki leg. /Kontyu, Vol. 45(1) (1977): p. 26

*Alysson monticola* 1977 [B1-288465]

HOLOTYPE ♂. Karisaka Pass, Saitama Pref., Japan, 1974.8.4, T. Nambu leg. /Kontyu, Vol. 45(1) (1977): p. 29

*Alysson monticola ezoensis* 1977 [B1-288466]

HOLOTYPE ♀. Sapporo (Maruyama), Hokkaido, Japan, 1958.7.26, S. Momoi leg. /Kontyu, Vol. 45(1) (1977): p. 32

*Alysson sibiricus nipponicus* 1968 [B1-288467]

HOLOTYPE ♂. Kososu, Saitama Pref., Japan, 1961.9.6, T. Nambu leg. /Etizenia, No. 27 (1968): p. 5

Currently placed as a synonym of *Didineis sibirica* Gussakovskij 1937 by Nemkov (1989).

*Argogorytes nipponis* 1963 [B1-288468]

HOLOTYPE ♀. Nikko, Tochigi Pref., Japan, 1936.7.22, K. Tsuneki leg. /Etizenia, No. 1 (1963): p. 7

*Bembecinus anthracinus mukodzimaensis* 1970 [B1-288469]

PARATYPE ♂. Is. Mukodzima, Ogasawara, Tokyo, Japan, 1969.7.20, T. Nakane leg. /Etizenia, No. 47 (1970): p. 6

***Bembecinus tanoi* 1971 [B1-288470]**

HOLOTYPE ♀. Sonai, Is. Iriomote, Okinawa Pref., Japan, 1969.7.25, T. Tano leg. /Etizenia, No. 56 (1971): p. 14  
The genitalia of the holotype are mounted separately on a card attached to the pin on which the specimen is mounted.

***Dienoplus tumidus japonensis* 1963 [B1-288471]**

HOLOTYPE ♀. Hossaka, Fukui Pref., Japan, 1954.9.23, K. Tsuneki leg. /Etizenia, No. 1 (1963): p. 8

***Gorytes aino* 1963 [B1-288472]**

HOLOTYPE ♀. Jozankei, Hokkaido, Japan, 1945.8.5, K. Tsuneki leg. /Etizenia, No. 1 (1963): p. 16  
The right fore wing of the holotype is glued to the data label.

***Gorytes fulvohirtus* 1963 [B1-288473]**

HOLOTYPE ♀. Koike, Fukui Pref., Japan, 1959.8.11, K. Tsuneki leg. /Etizenia, No. 1 (1963): p. 11  
The holotype has golden rectangular label "Holotype *Gorytes fulvohirtus*" in Tsuneki's handwriting.  
Currently placed as *Eogorytes fulvohirtus* (Tsuneki 1963) by Bohart & Menke (1976).

***Gorytes hakutozanus* 1963 [B1-288474]**

HOLOTYPE ♀. Nansetsu-rei, N.Korea, 1943.7.24, K. Tsuneki leg. /Etizenia, No. 1 (1963): p. 17  
Currently placed as a synonym of *Gorytes neglectus* Handlirsch 1895 by Nemkov (19789).

***Gorytes ishigakiensis* 1982 [B1-288475]**

HOLOTYPE ♂. Is. Ishigaki, Okinawa Pref., Japan, 1981.4.20, K. Baba leg. /Spec. Publ. Jap. Hymen. Ass., No. 23 (1982): p. 48

***Gorytes takeuchii* 1963 [B1-288476]**

HOLOTYPE ♂. Kazan, Korea, 1936.5.5, K. Takeuchi leg. /Etizenia, No. 1 (1963): p. 18  
The right hind wing of the holotype is mounted separately on a card attached to the pin on which the specimen is mounted. Currently placed as a synonym of *Gorytes npieli* Yasumatsu 1943 by Nemkov (1989).

***Lestiphorus bilunulatus yamatonis* 1963 [B1-288477]**

HOLOTYPE ♀. Nikko, Tochigi Pref., Japan, ????.???, E. Tanaka leg. /Etizenia, No. 1 (1963): p. 9  
This specimen have no date-data label. Scince the locality and collector name on the label conflicts with the published data ("1955.8.9, K. Tsuneki leg. "), the specimen may be a paratype.

***Nysson trimaculatus japonicus* 1964 [B1-288478]**

HOLOTYPE ♂. Mt. Haku, Ishikawa Pref., Japan, 1956.8.15, K. Tsuneki leg. /Etizenia, No. 6 (1964): p. 1

***Nysson trimaculatus japonicus* 1964 [B1-288479]**

PARATYPE ♀. Mt. Haku, Ishikawa Pref., Japan, 1956.7.20, K. Tsuneki leg. /Etizenia, No. 6 (1964): p. 1

### Family Pemphredonidae

***Carinostigmus nozakai* 1977 [B1-288480]**

HOLOTYPE ♂. Pempuchi, Nantou Pref., Formosa, 1971.7.30, C. Nozaka leg. /Spec. Publ. Jap. Hymen. Ass., No. 2 (1977): p. 14

***Carinostigmus tanoi* 1977 [B1-288481]**

HOLOTYPE ♂. Pempuchi, Nantou Pref., Formosa, 1976.7.29, T. Tano leg. /Spec. Publ. Jap. Hymen. Ass., No. 2 (1977): p. 15

***Passaloecus alishanus* 1971 [B1-288482]**

HOLOTYPE ♀. Kansitaku, Chiai Pref., Formosa, 1968.8.6, K. Tsuneki leg. /Etizenia, No. 57 (1971): p. 13  
Currently placed as *Polemistus alishanus* (Tsuneki 1971) by Bohart & Menke (1976).

***Passaloecus annulatus nipponicola* 1955 [B1-288483]**

HOLOTYPE ♂. Koike, Fukui Pref., Japan, 1954.7.31, K. Tsuneki leg. /Mem. Fac. Lib. Arts, Fukui Univ., Ser II, Nat.Sci., No. 5 (1955): p. 13  
Raised to *Passaloecus nipponicola* Tsuneki 1955 by Bohart & Menke (1976).

***Passaloecus corniger hakusanicus* 1955 [B1-288484]**

HOLOTYPE ♂. Koike, Fukui Pref., Japan, 1954.7.31, K. Tsuneki leg. /Mem. Fac. Lib. Arts, Fukui Univ., Ser II, Nat.Sci., No. 5 (1955): p. 19

***Passaloecus corniger hakusanicus* 1955 [B1-288485]**

ALLOTYPE ♀. Mitsudani, Ishikawa Pref., Japan, 1954.8.3, K. Tsuneki leg. /Mem. Fac. Lib. Arts, Fukui Univ., Ser II, Nat.Sci., No. 5 (1955): p. 19

- Passaloecus dubius* 1955 [B1-288486]  
HOLOTYPE ♀. Mitsudani near Koike, Ishikawa Pref., Japan, 1954.8.3, K. Tsuneki leg. /Mem. Fac. Lib. Arts, Fukui Univ., Ser II, Nat.Sci., No. 5 (1955): p. 17
- Passaloecus formosus* 1967 [B1-288488]  
HOLOTYPE ♀. Fenchihu, Chiayi Pref., Formosa, 1966.7.26, K. Tsuneki leg. /Etizenia, No. 24 (1967): p. 10  
The head of the holotype is mounted separately on a card on which the specimen is mounted.  
Currently placed as *Polemistus formosus* (Tsuneki 1967) by Bohart & Menke (1976).
- Passaloecus guracilis yamato* 1955 [B1-288489]  
HOLOTYPE ♂. Jozankei, Hokkaido, Japan, 1949.8.13, K. Tsuneki leg. /Mem. Fac. Lib. Arts, Fukui Univ., Ser II, Nat.Sci., No. 5 (1955): p. 9  
Currently placed as a synonym of *Passaloecus clypealis* Faester 1947 by Bohart & Menke (1976).
- Passaloecus mishimaensis* 1990 [B1-288490]  
HOLOTYPE ♂. Mishima, Shizuoka Pref., Japan, 1987.6.19, K. Tsuneki leg. /Spec. Publ. Jap. Hymen. Ass., No. 36 (1990): p. 102
- Passaloecus mishimaensis* 1990 [B1-288491]  
PARATYPE ♂. Mishima, Shizuoka Pref., Japan, 1987.4.29, K. Tsuneki leg. /Spec. Publ. Jap. Hymen. Ass., No. 36 (1990): p. 102
- Passaloecus mishimaensis* 1990 [B1-288492]  
PARATYPE ♀. Mishima, Shizuoka Pref., Japan, 1987.5.30, K. Tsuneki leg. /Spec. Publ. Jap. Hymen. Ass., No. 36 (1990): p. 102
- Passaloecus mishimaensis* 1990 [B1-288493]  
PARATYPE ♂. Mishima, Shizuoka Pref., Japan, 1987.6.16, K. Tsuneki leg. /Spec. Publ. Jap. Hymen. Ass., No. 36 (1990): p. 102
- Passaloecus mishimaensis* 1990 [B1-288494]  
PARATYPE ♂. Mishima, Shizuoka Pref., Japan, 1987.6.16, K. Tsuneki leg. /Spec. Publ. Jap. Hymen. Ass., No. 36 (1990): p. 102
- Passaloecus mishimaensis* 1990 [B1-288495]  
PARATYPE ♂. Mishima, Shizuoka Pref., Japan, 1987.6.16, K. Tsuneki leg. /Spec. Publ. Jap. Hymen. Ass., No. 36 (1990): p. 102
- Passaloecus mishimaensis* 1990 [B1-288496]  
PARATYPE ♂. Mishima, Shizuoka Pref., Japan, 1987.6.16, K. Tsuneki leg. /Spec. Publ. Jap. Hymen. Ass., No. 36 (1990): p. 102
- Passaloecus mishimaensis* 1990 [B1-288497]  
PARATYPE ♂. Mishima, Shizuoka Pref., Japan, 1987.6.16, K. Tsuneki leg. /Spec. Publ. Jap. Hymen. Ass., No. 36 (1990): p. 102
- Passaloecus mishimaensis* 1990 [B1-288498]  
PARATYPE ♀. Mishima, Shizuoka Pref., Japan, 1987.6.16, K. Tsuneki leg. /Spec. Publ. Jap. Hymen. Ass., No. 36 (1990): p. 102
- Passaloecus mishimaensis* 1990 [B1-288499]  
PARATYPE ♀. Mishima, Shizuoka Pref., Japan, 1987.6.18, K. Tsuneki leg. /Spec. Publ. Jap. Hymen. Ass., No. 36 (1990): p. 102
- Passaloecus mishimaensis* 1990 [B1-288500]  
PARATYPE ♀. Mishima, Shizuoka Pref., Japan, 1987.6.18, K. Tsuneki leg. /Spec. Publ. Jap. Hymen. Ass., No. 36 (1990): p. 102
- Passaloecus mishimaensis* 1990 [B1-288501]  
PARATYPE ♀. Mishima, Shizuoka Pref., Japan, 1987.6.18, K. Tsuneki leg. /Spec. Publ. Jap. Hymen. Ass., No. 36 (1990): p. 102
- Passaloecus mishimaensis* 1990 [B1-288502]  
PARATYPE ♂. Mishima, Shizuoka Pref., Japan, 1987.6.19, K. Tsuneki leg. /Spec. Publ. Jap. Hymen. Ass., No. 36 (1990): p. 102



- Passaloecus mishimaensis* 1990 [B1-288503]  
PARATYPE ♂. Mishima, Shizuoka Pref., Japan, 1987.6.19, K. Tsuneki leg. /Spec. Publ. Jap. Hymen. Ass., No. 36 (1990): p. 102
- Passaloecus mishimaensis* 1990 [B1-288504]  
PARATYPE ♂. Mishima, Shizuoka Pref., Japan, 1987.6.22, K. Tsuneki leg. /Spec. Publ. Jap. Hymen. Ass., No. 36 (1990): p. 102
- Passaloecus mishimaensis* 1990 [B1-288505]  
PARATYPE ♂. Mishima, Shizuoka Pref., Japan, 1987.6.22, K. Tsuneki leg. /Spec. Publ. Jap. Hymen. Ass., No. 36 (1990): p. 102
- Passaloecus mishimaensis* 1990 [B1-288506]  
PARATYPE ♀. Mishima, Shizuoka Pref., Japan, 1987.6.25, K. Tsuneki leg. /Spec. Publ. Jap. Hymen. Ass., No. 36 (1990): p. 102
- Passaloecus mishimaensis* 1990 [B1-288507]  
PARATYPE ♂. Mishima, Shizuoka Pref., Japan, 1987.9.29, K. Tsuneki leg. /Spec. Publ. Jap. Hymen. Ass., No. 36 (1990): p. 102
- Passaloecus mishimaensis* 1990 [B1-288508]  
PARATYPE ♀. Mishima, Shizuoka Pref., Japan, 1987.6.23, K. Tsuneki leg. /Spec. Publ. Jap. Hymen. Ass., No. 36 (1990): p. 102
- Pemphredon sudai* 1972 [B1-288513]  
HOLOTYPE ♀. Mt. Kanayama, Masutomi-spa, Yamanashi Pref., Japan, 1968.7.8, H. Suda leg. /Etizenia, No. 59 (1972): p. 12
- Pemphredon sudaorum* 1977 [B1-288514]  
HOLOTYPE ♀. Kami-Isshiki Village, Yamanashi Pref., Japan, 1975.7.22, H. Suda leg. /Spec. Publ. Jap. Hymen. Ass., No. 5 (1977): p. 10
- Pemphredon sudaorum* 1977 [B1-288515]  
PARATYPE ♂. Kami-Isshiki Village, Yamanashi Pref., Japan, 1975.7.22, H. Suda leg. /Spec. Publ. Jap. Hymen. Ass., No. 5 (1977): p. 10
- Psen alticola* 1977 [B1-288516]  
HOLOTYPE ♂. Mt. Haku, Ishikawa Pref., Japan, 1966.7.30, K. Tsuneki leg. /Kontyu, Vol. 45(3) (1977): p. 370
- Psen aurifrons* 1959 [B1-288517]  
HOLOTYPE ♀. Sabae, Fukui Pref., Japan, 1955.9.25, K. Tsuneki leg. /Mem. Fac. Lib. Arts, Fukui Univ., Ser II, Nat.Sci., No. 9 (1959): p. 63  
Two determination labels are attached to the holotype: "*Psen caocinnus*" and "*Psen aurifrons*". Renamed *Psen caocinnus* by Tsuneki (1973), but unnecessary new name for *aurifrons*.
- Psen dzimm* 1959 [B1-288518]  
HOLOTYPE ♂. Nikko, Tochigi Pref., Japan, 1955.8.5, K. Tsuneki leg. /Mem. Fac. Lib. Arts, Fukui Univ., Ser II, Nat.Sci., No. 9 (1959): p. 68
- Psen foveicornis* 1982 [B1-288519]  
HOLOTYPE ♂. Mt. Ali, Chiai Pref., Formosa, 1980.8.18, M. Terayama leg. /Spec. Publ. Jap. Hymen. Ass., No. 23 (1982): p. 21
- Psen hanedai* 1964 [B1-288520]  
HOLOTYPE ♀. Konsei-Pass, Nikko, Tochigi Pref., Japan, 1963.7.16, Y. Haneda leg. /Insecta Matsumurana, Vol. 27 (1964): p. 13  
Currently placed as *Odontopsen hanedai* (Tsuneki 1964) by Bohart & Menke (1976).
- Psen mishimae* 1984 [B1-288521]  
HOLOTYPE ♀. Mishima, Shizuoka Pref., Japan, 1983.10.2, K. Tsuneki leg. /Spec. Publ. Jap. Hymen. Ass., No. 28 (1984): p. 58
- Psen miyagino* 1983 [B1-288522]  
HOLOTYPE ♂. Rifu-Cho, Miyagi Pref., Japan, 1981.7.12, K. Goukon leg. /Spec. Publ. Jap. Hymen. Ass., No. 25 (1983): p. 63

***Psen nitidus hikosanus*** 1977 [B1-288523]

HOLOTYPE ♂. Mt. Hiko, Kyushu, Japan, 1976.6.18, M. T. Chujo leg. /Spec. Publ. Jap. Hymen. Ass., No. 5 (1977): p. 12

***Psen richardsi*** 1959 [B1-288524]

HOLOTYPE ♀. Shobugahama, Nikko, Tochigi Pref., Japan, 1954.8.10, K. Tsuneki leg. /Mem. Fac. Lib. Arts, Fukui Univ., Ser II, Nat.Sci., No. 9 (1959): p. 71

***Psen seminitidus bettoh*** 1977 [B1-288525]

HOLOTYPE ♀. Nikengoya, S. Japan Alps, Japan, 1974.8.3-4, K. Tsuneki leg. /Kontyu, Vol. 45(3) (1977): p. 368

***Psen terayamai*** 1982 [B1-288526]

HOLOTYPE ♀. Nanshanchi, Nantou Pref., Formosa, 1980.9.4, M. Terayama leg. /Spec. Publ. Jap. Hymen. Ass., No. 23 (1982): p. 23

***Psen vanlithi*** 1959 [B1-288528]

HOLOTYPE ♂. Sabae, Fukui Pref., Japan, 1954.6.11, K. Tsuneki leg. /Mem. Fac. Lib. Arts, Fukui Univ., Ser II, Nat.Sci., No. 9 (1959): p. 61

The genitalia of the holotype are mounted separately on a card attached to the pin on which the specimen is mounted. Currently placed as *Mimumesa vanlithi* (Tsuneki 1959) by Bohart & Menke (1976).

***Psen vanlithi meridionalis*** 1972 [B1-288527]

HOLOTYPE ♂. Ilan City, Ilan Pref., Formosa, 1971.8.7, Y. Haneda leg. /Etizenia, No. 60 (1972): p. 5

Currently placed as *Mimumesa vanlithi meridionalis* (Tsuneki 1972) by Bohart & Menke (1976).

***Psenulus fuscipes*** 1959 [B1-288529]

HOLOTYPE ♀. Sakatani, Fukui Pref., Japan, 1954.6.18, K. Tsuneki leg. /Mem. Fac. Lib. Arts, Fukui Univ., Ser II, Nat.Sci., No. 9 (1959): p. 33

***Psenulus maculipes*** 1959 [B1-288530]

HOLOTYPE ♀. Koike, Fukui Pref., Japan, 1957.8.2, K. Tsuneki leg. /Mem. Fac. Lib. Arts, Fukui Univ., Ser II, Nat.Sci., No. 9 (1959): p. 34

***Psenulus nikkoensis*** 1959 [B1-288531]

HOLOTYPE ♀. Shobugahama, Nikko, Tochigi Pref., Japan, 1953.8.20, E. Tanaka leg. /Mem. Fac. Lib. Arts, Fukui Univ., Ser II, Nat.Sci., No. 9 (1959): p. 39

***Psenulus ogasawaranus*** 1984 [B1-288532]

HOLOTYPE ♂. Chichidzima, Is. Ogasawaras, Tokyo, Japan, 1983.8.9, T. Nambu leg. /Spec. Publ. Jap. Hymen. Ass., No. 28 (1984): p. 1

***Psenulus okinawanus*** 1990 [B1-288533]

HOLOTYPE ♀. Mt. Otoha, Is. Okinawa, Okinawa Pref., Japan, 1987.4.24, Y. Haneda leg. /Spec. Publ. Jap. Hymen. Ass., No. 36 (1990): p. 81

***Psenulus okinawanus*** 1990 [B1-288534]

PARATYPE ♂. Mt. Otoha, Is. Okinawa, Okinawa Pref., Japan, 1987.4.24, Y. Haneda leg. /Spec. Publ. Jap. Hymen. Ass., No. 36 (1990): p. 81

***Psenulus pallipes yamatonis*** 1959 [B1-288535]

HOLOTYPE ♀. Sakatani, Fukui Pref., Japan, 1954.5.18, K. Tsuneki leg. /Mem. Fac. Lib. Arts, Fukui Univ., Ser II, Nat.Sci., No. 9 (1959): p. 42

***Psenulus sudaorum*** 1986 [B1-288536]

HOLOTYPE ♂. Shikkawa Sumata, Kitakoma-gun, Yamanashi Pref., Japan, 1979.5.27, H. Suda leg. /Spec. Publ. Jap. Hymen. Ass., No. 32 (1986): p. 28

***Psenulus tanakai*** 1959 [B1-288537]

HOLOTYPE ♀. Kuriyama, Nikko, Tochigi Pref., Japan, 1956.8.3, E. Tanaka leg. /Mem. Fac. Lib. Arts, Fukui Univ., Ser II, Nat.Sci., No. 9 (1959): p. 45

***Psenulus yingfeng*** 1982 [B1-288538]

HOLOTYPE ♀. Yingfeng, Nantou Pref., Formosa, 1980.8.3, T. Nambu leg. /Spec. Publ. Jap. Hymen. Ass., No. 23 (1982): p. 25

***Spilomena dedzcli*** 1971 [B1-288539]

HOLOTYPE ♀. Shimo-utinami, Fukui Pref., Japan, 1970.8.10, K. Tsuneki leg. /Life Study (Fukui), Vol. 15 (1971): p. 12  
The head of the holotype is mounted separately on a card on which the specimen is mounted.

***Spilomena djozankeianus*** 1986 [B1-288540]

HOLOTYPE ♂. Jozankei, Hokkaido, Japan, 1958.6.30, M. Miyatake leg. /Spec. Publ. Jap. Hymen. Ass., No. 32 (1986): p. 27

***Spilomena japonica*** 1956 [B1-288541]

HOLOTYPE ♀. Tyuzendzi, Nikko, Tochigi Pref., Japan, 1954.8.2, E. Tanaka leg. /Kontyu, Vol. 24(2) (1956): p. 74

***Spilomena koikensis*** 1971 [B1-288542]

HOLOTYPE ♀. Koike, Fukui Pref., Japan, 1969.7.21, K. Tsuneki leg. /Life Study (Fukui), Vol. 15 (1971): p. 12

***Spilomena laeviceps*** 1956 [B1-288543]

HOLOTYPE ♀. Koike, Fukui Pref., Japan, 1954.7.28, K. Tsuneki leg. /Kontyu, Vol. 24(2) (1956): p. 73

***Spilomena nikkoensis*** 1971 [B1-288545]

HOLOTYPE ♀. Shobugahama, Nikko, Japan, 1955.8.9, K. Tsuneki leg. /Life Study (Fukui), Vol. 15 (1971): p. 10

***Stigmus convergens*** 1954 [B1-288546]

HOLOTYPE ♀. Akagawa, Hokkaido, Japan, 1952.6.18, M. Munakata leg. /Mem. Fac. Lib. Arts, Fukui Univ., Ser II, Nat.Sci., No. 3 (1954): p. 33

The holotype data conflicts with the published data ("1952.7.18").

***Stigmus europaeus*** 1954 [B1-288547]

HOLOTYPE ♀. Vanaja, Finland, 1953, F. Valkeille leg. /Mem. Fac. Lib. Arts, Fukui Univ., Ser II, Nat.Sci., No. 3 (1954): p. 25

Currently placed as a synonym of *Stigmus solskyi* Morawitz 1864 by Bohart & Menke (1976).

***Stigmus europaeus*** 1954 [B1-288548]

PARATYPE ♀. Av. Det de Chaves, Portugal, 1947.6.28, N. F. de Andrade leg. /Mem. Fac. Lib. Arts, Fukui Univ., Ser II, Nat.Sci., No. 3 (1954): p. 25

Currently placed as a synonym of *Stigmus solskyi* Morawitz 1864 by Bohart & Menke (1976).

***Stigmus flavicornis*** 1954 [B1-288549]

HOLOTYPE ♂. Katsuyama, Fukui Pref., Japan, 1954.5.28, K. Tsuneki leg. /Mem. Fac. Lib. Arts, Fukui Univ., Ser II, Nat.Sci., No.3 (1954): p. 35

Currently placed as a synonym of *Stigmus munakatai* Tsuneki 1954 by Budrys (1987).

***Stigmus flavicornis*** 1954 [B1-288550]

PARATYPE ♂. Katsuyama, Fukui Pref., Japan, 1954.6.4, K. Tsuneki leg. /Mem. Fac. Lib. Arts, Fukui Univ., Ser II, Nat.Sci., No.3 (1954): p. 35

Currently placed as a synonym of *Stigmus munakatai* Tsuneki 1954 by Budrys (1987).

***Stigmus iwatai*** 1954 [B1-288551]

HOLOTYPE ♀. Is. Hainan, China, 1944.3.23, K. Iwata leg. /Mem. Fac. Lib. Arts, Fukui Univ., Ser II, Nat.Sci., No. 3 (1954): p. 15

Currently placed as *Carinostigumus iwatai* (Tsuneki 1954) by Bohart & Menke (1976).

***Stigmus iwatai*** 1954 [B1-288552]

ALLOTYPE ♂. Is. Hainan, China, 1944.3.23, K. Iwata leg. /Mem. Fac. Lib. Arts, Fukui Univ., Ser II, Nat.Sci., No. 3 (1954): p. 15

Currently placed as *Carinostigumus iwatai* (Tsuneki 1954) by Bohart & Menke (1976).

***Stigmus japonicus*** 1954 [B1-288553]

HOLOTYPE ♀. Kyogoku-mura, Hokkaido, Japan, 1952.7.7, M. Munakata leg. /Mem. Fac. Lib. Arts, Fukui Univ., Ser II, Nat.Sci., No. 3 (1954): p. 29

***Stigmus murotai*** 1977 [B1-288555]

HOLOTYPE ♀. Pempuchi, Nantou Pref., Formosa, 1976.8.19, T. Murota leg. /Spec. Publ. Jap. Hymen. Ass., No. 2 (1977): p. 12

***Stigmus quadriceps*** 1954 [B1-288556]

HOLOTYPE ♀. Koike, Fukui Pref., Japan, 1954.7.31, K. Tsuneki leg. /Mem. Fac. Lib. Arts, Fukui Univ., Ser II, Nat.Sci., No. 4 (1954): p. 47

*Stigmus shirozui* 1964 [B1-288557]

HOLOTYPE ♂. Is. Amami, Kagoshima Perf., Japan, 1955.7.21, T. Shirozu leg. /Etizenia, No. 6 (1964): p. 6

*Stigmus verhoeffi* 1954 [B1-288558]

HOLOTYPE ♀. Vaud, Planchamps Clarens, Helvetia, 1946.5.3, P. M. F. Verhoeff leg. /Mem. Fac. Lib. Arts, Fukui Univ., Ser II, Nat.Sci., No. 3 (1954): p. 26

Currently placed as a synonym of *Stigmus solskyi* Morawitz 1864 by Bohart & Menke (1976).

*Stigmus verhoeffi* 1954 [B1-288559]

ALLOTYPE ♂. Vanaja, Finland, 1953, E. Valkeile leg. /Mem. Fac. Lib. Arts, Fukui Univ., Ser II, Nat.Sci., No. 3 (1954): p. 26

Currently placed as a synonym of *Stigmus solskyi* Morawitz 1864 by Bohart & Menke (1976).

#### Family Philanthidae

*Cerceris hortivaga amamiensis* 1961 [B1-288560]

HOLOTYPE ♀. Nishinakama, Is. Amami-Oshima, Kagoshima Perf., Japan, 1961.6.25, K. Tsuneki leg. /Mem. Fac. Lib. Arts, Fukui Univ., Ser II, Nat.Sci., No. 11 (1961): p. 30

Rasied to *Cerceris amamiensis* Tsuneki 1961 by Sk. Yamane and Tano (1995).

*Cerceris kumamotonis* 1978 [B1-288561]

HOLOTYPE ♀. Gokasho, Kumamoto Pref., Japan, 1977.8.2, T. Tano leg. /Trans. Shikoku Ent. Soc., Vol. 14 (1978): p. 81

*Cerceris nipponensis* 1961 [B1-288562]

HOLOTYPE ♀. Mt. Haku, Ishikawa Pref., Japan, 1957.8.15, K. Tsuneki leg. /Mem. Fac. Lib. Arts, Fukui Univ., Ser II, Nat.Sci., No. 11 (1961): p. 31

*Cerceris nipponensis* 1961 [B1-288563]

ALLOTYPE ♂. Sounkyo, Hokkaido, Japan, 1952.8.1, K. Tsuneki leg. /Mem. Fac. Lib. Arts, Fukui Univ., Ser II, Nat.Sci., No. 11 (1961): p. 31

*Cerceris okumurai* 1968 [B1-288564]

HOLOTYPE ♀. Is. Amami-Oshima, Kagoshima Perf., Japan, 1967.7.28, T. Okumura leg. /Etizenia, No. 27 (1968): p. 1

*Cerceris saishuensis* 1968 [B1-288565]

HOLOTYPE ♂. Mt. Hanna, Is. Quelpart, Korea, 1968.7.12, T. Shirozu leg. /Life Study (Fukui), Vol. 12 (1968): p. 53

*Cerceris shirozui* 1968 [B1-288566]

HOLOTYPE ♀. Mt. Hanna, Is. Quelpart, Korea, 1968.7.13, T. Shirozu leg. /Life Study (Fukui), Vol. 12 (1968): p. 51

*Cerceris yuwanensis* 1982 [B1-288567]

HOLOTYPE ♂. Yuwan, Is. Amami-Oshima, Kagoshima Perf., Japan, 1979.5.20, H. Nagase leg. /Spec. Publ. Jap. Hymen. Ass., No. 23 (1982): p. 77

#### Family Sphecidae

*Sceliphron deforme nipponicum* 1972 [B1-288568]

HOLOTYPE ♀. Iwaya, Fukui Pref., Japan, 1967.8.8, K. Tsuneki leg. /Etizenia, No. 59 (1972): p. 1

*Sphex fukuianus* 1957 [B1-288569]

HOLOTYPE ♀. Yashirodani, Fukui Pref., Japan, 1956.9.2, K. Tsuneki leg. /Kontyu, Vol. 25(2) (1957): p. 46

Down grade to *Sphex inusitatus fukuianus* Tsuneki 1957 by Bohart & Menke (1976).

#### Superfamily Vespoidea

##### Family Eumenidae

*Nannodynerus coreanus* 1970 [B1-288570]

HOLOTYPE ♀. Kodai, Korea, 1943.6.27, K. Tsuneki leg. /Etizenia, No. 46 (1970): p. 19

This specimen has a red rectangular label "Holotype *Annodynerus koreanus*". However, it may be the holotype of *Nannodynerus coreanus*, because the date and locality on the label agree with the published data.

- Nannodynerus coreanus*** 1970 [B1-288571]  
 PARATYPE ♀. Kodai, Korea, 1943.7.27, K. Tsuneki leg. /Etizenia, No. 46 (1970): p. 19  
 This specimen has a red rectangular label "paratype *Annodynerus koreanus*". However, it may be a paratype of *Nannodynerus coreanus*, because the date and locality on the label agree with the published data.
- Nannodynerus coreanus*** 1970 [B1-288572]  
 PARATYPE ♀. Kodai, Korea, 1943.7.2, K. Tsuneki leg. /Etizenia, No. 46 (1970): p. 19  
 This specimen has a red rectangular label "paratype *Annodynerus koreanus*". However, it may be a paratype of *Nannodynerus coreanus*, because the date and locality on the label agree with the published data.
- Nannodynerus coreanus*** 1970 [B1-288573]  
 PARATYPE ♀. Mt. Shyoyo, Keikido, Korea, 1943.7.2, K. Tsuneki leg. /Etizenia, No. 46 (1970): p. 19  
 This specimen has a red rectangular label "paratype *Annodynerus koreanus*". However, it may be a paratype of *Nannodynerus coreanus*, because the date and locality on the label agree with the published data.
- Symmorphus hakutozanus*** 1986 [B1-288574]  
 HOLOTYPE ♀. Mt. Hakuto, Jimmudjo, Korea, 1942.7.27, K. Tsuneki leg. /Spec. Publ. Jap. Hymen. Ass., No. 32 (1986): p. 23  
 Currently placed as a synonym of *Symmorphus angustatus* (Zetterstedt 1838) by Cumming (1989).
- Symmorphus iiyamai*** 1986 [B1-288575]  
 HOLOTYPE ♂. Mt. Hakuto, Jimmudjo, Korea, 1942.8.3, K. Tsuneki leg. /Spec. Publ. Jap. Hymen. Ass., No. 32 (1986): p. 26  
 Currently placed as a synonym of *Symmorphus mizuhonis* Tsuneki 1963 by Cumming (1989).
- Symmorphus mizuhonis*** 1977 [B1-288576]  
 HOLOTYPE ♀. Oku-Nasu, Tochigi Pref., Japan, 1970.7.26, T. Nambu leg. /Spec. Publ. Jap. Hymen. Ass., No. 5 (1977): p. 17
- Symmorphus mutinensis yezoanus*** 1977 [B1-288577]  
 HOLOTYPE ♀. Sapporo (Fushimi), Hokkaido, Japan, 1958.11, T. Nambu leg. /Spec. Publ. Jap. Hymen. Ass., No. 5 (1977): p. 16  
 The right both and left hind wings of the holotype are mounted separately on a card attached to the pin on which the specimen is mounted. Currently placed as a synonym of *Symmorphus angustatus* (Zetterstedt 1838) by Cumming (1989).
- Symmorphus nansetsurei*** 1986 [B1-288578]  
 HOLOTYPE ♂. Mt. Nansetsurei, Kankyo-hokudo, Korea, 1943.7.24, K. Tsuneki leg. /Spec. Publ. Jap. Hymen. Ass., No. 32 (1986): p. 27  
 The genitalia of the holotype are mounted separately on a card attached to the pin on which the specimen is mounted. The left fore wing and left fore leg are glued to the data label. Currently placed as a synonym of *Symmorphus angustatus* (Zetterstedt 1838) by Cumming (1989).
- Symmorphus piceanus*** 1986 [B1-288579]  
 HOLOTYPE ♂. Mt. Hakuto, Jimmudjo, Korea, 1942.7.4, K. Tsuneki leg. /Spec. Publ. Jap. Hymen. Ass., No. 32 (1986): p. 27  
 Currently placed as a synonym of *Symmorphus mizuhonis* Tsuneki 1963 by Cumming (1989).
- Symmorphus sassai*** 1986 [B1-288580]  
 HOLOTYPE ♂. Mt. Hakuto, Jimmudjo, Korea, 1942.8.3, K. Tsuneki leg. /Spec. Publ. Jap. Hymen. Ass., No. 32 (1986): p. 27  
 Currently placed as a synonym of *Symmorphus mizuhonis* Tsuneki 1963 by Cumming (1989).
- Symmorphus seoulensis*** 1986 [B1-288581]  
 HOLOTYPE ♀. Seoul, Korea, 1943.5.22, K. Tsuneki leg. /Spec. Publ. Jap. Hymen. Ass., No. 32 (1986): p. 22  
 Currently placed as a synonym of *Symmorphus apiciornatus* (Cameron 1911) by Cumming (1989).
- Symmorphus shiroyamai*** 1986 [B1-288582]  
 HOLOTYPE ♂. Mt. Nansetsurei, Kankyo-hokudo, Korea, 1943.7.19, K. Tsuneki leg. /Spec. Publ. Jap. Hymen. Ass., No. 32 (1986): p. 27  
 Currently placed as a synonym of *Symmorphus mizuhonis* Tsuneki 1963 by Cumming (1989).
- Symmorphus sounkionis*** 1986 [B1-288583]  
 HOLOTYPE ♀. Sounkyo, Hokkaido, Japan, 1945.8.16, K. Tsuneki leg. /Spec. Publ. Jap. Hymen. Ass., No. 32 (1986): p. 22  
 Currently placed as *Ancistrocerus sounkionis* (Tsuneki 1986) by Cumming (1989).

### Family Mutillidae

***Odontomutilla taiwaniana nipponica*** 1972 [B1-288584]

HOLOTYPE ♂. Arashi, Fukui Pref., Japan, 1970.9.20, K. Tsuneki leg. /Etizenia, No. 61 (1972): p. 7

***Smicromyrme chihpenchia*** 1993 [B1-288585]

HOLOTYPE ♂. Chihpenchi, Taitung Pref., Formosa, 1976.8.12, T. Murota leg. /Spec. Publ. Jap. Hymen. Ass., No. 41 (1993): p. 43

***Smicromyrme chuchiana*** 1993 [B1-288586]

HOLOTYPE ♀. Chunchi, Chiai Pref., Formosa, 1976.7.29-30, T. Murota leg. /Spec. Publ. Jap. Hymen. Ass., No. 41 (1993): p. 40

***Smicromyrme fukudai*** 1972 [B1-288587]

HOLOTYPE ♂. Is. Yakushima, Kagoshima Pref., Japan, 1967.8.14, H. Fukuda leg. /Etizenia, No. 61 (1972): p. 18  
Currently placed as *Petersenidia fukudai* (Tuneki 1972) by Lelej & Sk. Yamane (1992).

***Smicromyrme momidziyama*** 1972 [B1-288588]

HOLOTYPE ♀. Momidziyama, Sapporo, Hokkaido, Japan, 1958.8.3, K. Tsuneki leg. /Etizenia, No. 61 (1972): p. 17

***Smicromyrme taiwana*** 1993 [B1-288589]

HOLOTYPE ♂. Pempuchi, Nantou Perf., Formosa, 1976.8.19, T. Murota leg. /Spec. Publ. Jap. Hymen. Ass., No. 41 (1993): p. 45

The genitalia and remaining abdominal parts of the holotype are mounted on a separate pin, which has the label "*Smicromyrme taiwana* Holotype (II)".

***Squamulotilla murotai*** 1993 [B1-288590]

HOLOTYPE ♀. Is. Okinawa, Okinawa Pref., Japan, 1987.8.12, T. Murota leg. /Spec. Publ. Jap. Hymen. Ass., No. 41 (1993): p. 51

***Trogaspidia chiaiensis*** 1993 [B1-288591]

HOLOTYPE ♀. Chuchi, Chiai Pref., Formosa, 1976.7.29-30, T. Murota leg. /Spec. Publ. Jap. Hymen. Ass., No. 41 (1993): p. 49

***Trogaspidia fukudai*** 1972 [B1-288592]

HOLOTYPE ♀. Is. Yakushima, Kagoshima Pref., Japan, 1967.8.14, H. Fukuda leg. /Etizenia, No. 61 (1972): p. 14  
The right fore wing and right antenna of the holotype are glued to the data label. Currently placed as a synonym of *Petersenidia fukudai* (Tuneki 1972) by Lelej & Sk. Yamane (1992).

***Trogaspidia vallicola*** 1993 [B1-288593]

HOLOTYPE ♀. Suchungchi, Pintung Pref., Formosa, 1976.8.2, T. Murota leg. /Spec. Publ. Jap. Hymen. Ass., No. 41 (1993): p. 48

### Family Pompilidae

***Anoplius iriomotensis*** 1990 [B1-288595]

HOLOTYPE ♂. Is. Iriomote, Okinawa Pref., Japan, 1989.4.21, Y. Haneda leg. /Spec. Publ. Jap. Hymen. Ass., No. 36 (1990): p. 50

The genitalia of the holotype are mounted separately on a card attached to the pin on which the specimen is mounted.

***Anoplius ishigakianus*** 1990 [B1-288596]

HOLOTYPE ♂. Is. Ishigaki, Okinawa Pref., Japan, 1985.6.5, Y. Haneda leg. /Spec. Publ. Jap. Hymen. Ass., No. 36 (1990): p. 48

The genitalia and right fore and hind wings of the holotype are mounted separately on a card attached to the pin on which the specimen is mounted.

***Anoplius nozakae*** 1990 [B1-288597]

HOLOTYPE ♂. Is. Okinawa, Okinawa Pref., Japan, 1987.8.16, C. Nozaka leg. /Spec. Publ. Jap. Hymen. Ass., No. 36 (1990): p. 53

The genitalia, remaining abdominal parts, and left antenna of the holotype are mounted separately on a card attached to the pin on which the specimen is mounted.

***Anoplius nozakae miyakonis*** 1990 [B1-288598]

HOLOTYPE ♂. Is. Miyako, Okinawa Pref., Japan, 1984.7.31, C. Nozaka leg. /Spec. Publ. Jap. Hymen. Ass., No. 36 (1990): p. 55

The genitalia and remaining abdominal parts of the holotype are mounted separately on a card attached to the pin on which the specimen is mounted. The left fore wing is glued to the data label.

***Anoplius sakishimanus*** 1990 [B1-288599]

HOLOTYPE ♀. Is. Iriomote, Okinawa Pref., Japan, 1989.4.21, Y. Haneda leg. /Spec. Publ. Jap. Hymen. Ass., No. 36 (1990): p. 45

The right fore and hind wings of the holotype are mounted separately on a card attached to the pin on which the specimen is mounted.

***Anoplius surusumi yayeyamanus*** 1990 [B1-288600]

HOLOTYPE ♂. Is. Ishigaki, Okinawa Pref., Japan, 1983.6.5, Y. Haneda leg. /Spec. Publ. Jap. Hymen. Ass., No. 36 (1990): p. 47

***Anoplius tanoi*** 1990 [B1-288601]

HOLOTYPE ♂. Is. Iriomote, Okinawa Pref., Japan, 1969.7.26, T. Tano leg. /Spec. Publ. Jap. Hymen. Ass., No. 36 (1990): p. 42

The genitalia and both antennae of the holotype are mounted separately on a card attached to the pin on which the specimen is mounted.

***Anoplius valdezi ryukyuensis*** 1990 [B1-288602]

HOLOTYPE ♀. Is. Amami-Oshima, Kagoshima Pref., Japan, 1967.7.27, T. Murota leg. /Spec. Publ. Jap. Hymen. Ass., No. 36 (1990): p. 40

***Anoplius yonagunianus*** 1990 [B1-288603]

HOLOTYPE ♂. Is. Yonaguni, Okinawa Pref., Japan, 1984.7.24, C. Nozaka leg. /Spec. Publ. Jap. Hymen. Ass., No. 36 (1990): p. 58

The genitalia and remaining abdominal parts of the holotype are mounted separately on a card attached to the pin on which the specimen is mounted. A further card has the right fore and left hind wings mounted on it, attached to the same pin.

***Auplopus murotai*** 1990 [B1-288605]

HOLOTYPE ♀. Is. Ishigaki, Okinawa Pref., Japan, 1985.8.4, T. Murota leg. /Spec. Publ. Jap. Hymen. Ass., No. 36 (1990): p. 30

Preoccupied name, replaced by *Auplopus nagatomii* Lelej & Sk. Yamane 1992.

***Auplopus nozakae*** 1990 [B1-288606]

HOLOTYPE ♀. Is. Iriomote (Uehara), Okinawa Pref., Japan, 1985.8.7, C. Nozaka leg. /Spec. Publ. Jap. Hymen. Ass., No. 36 (1990): p. 25

The specimen has holotype label, but the data and sex conflict with the published data of the holotype ("Male, Is. Ishigaki (Kabira), 1984.7.29"). As the data and sex agree with a paratype data, Tsuneki has in error labelled the specimens as holotype.

***Auplopus nozakae okinawanus*** 1990 [B1-288607]

HOLOTYPE ♀. Is. Okinawa, Okinawa Pref., Japan, 1984.8.17, C. Nozaka leg. /Spec. Publ. Jap. Hymen. Ass., No. 36 (1990): p. 29

***Ceropales pygmaeus japonicus*** 1989 [B1-288608]

HOLOTYPE ♂. Arashi, Fukui Pref., Japan, 1976.8.11, K. Tsuneki leg. /Spec. Publ. Jap. Hymen. Ass., No. 35 (1989): p. 159

***Ceropales pygmaeus japonicus*** 1989 [B1-288609]

PARATYPE ♂. Jozankei, Sapporo, Hokkaido, Japan, 1946.8.24, K. Tsuneki leg. /Spec. Publ. Jap. Hymen. Ass., No. 35 (1989): p. 159

***Ferreola yayeyamaensis*** 1990 [B1-288594]

HOLOTYPE ♀. Is. Iriomote (Inaba), Okinawa Pref., Japan, 1969.7.26, T. Tano leg. /Spec. Publ. Jap. Hymen. Ass., No. 36 (1990): p. 31

The specimen is labelled "*Ferreola iriomotensis* Holotype", which may be an unpublished manuscript name. However, the data on the label agrees with the published data of *Ferreola yayeyamaensis*. Tsuneki omitted probably to change the det. label on the holotype. The right fore and hind wings are mounted separately on a card attached to the pin on which the specimen is mounted. Currently placed as a synonym of *Ferreola hirayamae* (Matsumura & Uchida 1926) by Lelej & Sk. Yamane (1992).

***Ferreoloides ryukyuensis* 1990 [B1-288610]**

HOLOTYPE ♂. Is. Ishigaki, Okinawa Pref., Japan, 1989.4.22, Y. Haneda leg. /Spec. Publ. Jap. Hymen. Ass., No. 36 (1990): p. 33

The genitalia and mouthparts of the holotype are mounted separately on a card attached to the pin on which the specimen is mounted. Currently placed as a synonym of *Ferreola hirayame* (Matsumura & Uchida 1926) by Lelej & Sk. Yamane (1992).

***Hatanomus granulatus* 1990 [B1-288611]**

HOLOTYPE ♀. Is. Iriomote, Okinawa Pref., Japan, 1969.7.25, T. Tano leg. /Spec. Publ. Jap. Hymen. Ass., No. 36 (1990): p. 61

The right fore and left hind wings of the holotype are glued to the data label.

***Hemipepsis amamiensis* 1990 [B1-288612]**

HOLOTYPE ♀. Is. Amami-Oshima, Kagoshima Pref., Japan, 1967.7.28, T. Murota leg. /Spec. Publ. Jap. Hymen. Ass., No. 36 (1990): p. 8

The right fore wing of the holotype is glued to the data label.

***Hemipepsis apicata* 1990 [B1-288613]**

HOLOTYPE ♂. Is. Iriomote, Okinawa Pref., Japan, 1989.4.24, Y. Haneda leg. /Spec. Publ. Jap. Hymen. Ass., No. 36 (1990): p. 10

The right fore and hind wings of the holotype are mounted separately on a card attached to the pin on which the specimen is mounted.

***Hemipepsis hanedai* 1990 [B1-288614]**

HOLOTYPE ♀. Is. Ishigaki, Okinawa Pref., Japan, 1989.4.22, Y. Haneda leg. /Spec. Publ. Jap. Hymen. Ass., No. 36 (1990): p. 4

***Hemipepsis yayeyamana* 1990 [B1-288615]**

HOLOTYPE ♂. Is. Ishigaki, Okinawa Pref., Japan, 1985.7.19, Y. Haneda leg. /Spec. Publ. Jap. Hymen. Ass., No. 36 (1990): p. 14

***Homonotus okinawanus* 1990 [B1-288616]**

HOLOTYPE ♀. Is. Okinawa, Okinawa Pref., Japan, 1987.8.12, T. Murota leg. /Spec. Publ. Jap. Hymen. Ass., No. 36 (1990): p. 58

***Morochares nigripennis okinawana* 1990 [B1-288617]**

HOLOTYPE ♀. Is. Okinawa, Okinawa Pref., Japan, 1987.8.11, T. Murota leg. /Spec. Publ. Jap. Hymen. Ass., No. 36 (1990): p. 37

***Morochares nigripennis yayeyamana* 1990 [B1-288618]**

HOLOTYPE ♀. Is. Miyako, Okinawa Pref., Japan, 1984.7.31, C. Nozaka leg. /Spec. Publ. Jap. Hymen. Ass., No. 36 (1990): p. 37

### Family Scoliidae

***Campsomeris aburasakana* 1972 [B1-288619]**

HOLOTYPE ♂. Aburasaka, Fukui Pref., Japan, 1964.8.24, K. Tsuneki leg. /Etizenia, No. 62 (1972): p. 7

The genitalia of the holotype are mounted separately on a card attached to the pin on which the specimen is mounted.

***Campsomeris mojiensis ryukyuana* 1972 [B1-288620]**

HOLOTYPE ♀. Is. Tokunoshima, Kagoshima Pref., Japan, 1961.6.26, H. Sasaji leg. /Etizenia, No. 62 (1972): p. 12

***Liacos melanogaster* 1982 [B1-288621]**

HOLOTYPE ♂. Sata Promontory, Ohdomari, Kagoshima Pref., Japan, 1979.9.9, H. Nagase leg. /Spec. Publ. Jap. Hymen. Ass., No. 23 (1982): p. 3

The genitalia of the holotype are mounted separately on a card attached to the pin on which the specimen is mounted.

***Liacos melanogaster* 1982 [B1-288622]**

PARATYPE ♀. Koh-ya-cho, Kagoshima Pref., Japan, 1978.10.1, H. Nagase leg. /Spec. Publ. Jap. Hymen. Ass., No. 23 (1982): p. 3



## Family Tiphidae

***Tiphia amagiana*** 1985 [B1-288623]

HOLOTYPE ♂. Mt. Amagi, Shizuoka Pref., Japan, 1975.8.15, K. Tsuneki leg. /Spec. Publ. Jap. Hymen. Ass., No. 31 (1985): p. 60

***Tiphia babai*** 1986 [B1-288624]

HOLOTYPE ♂. Ikenodaira, Niigata Pref., Japan, 1976.9.14, K. Baba leg. /Spec. Publ. Jap. Hymen. Ass., No. 32 (1986): p. 8

***Tiphia dzickok*** 1985 [B1-288625]

HOLOTYPE ♀. Dzickok Pass, Gumma Pref., Japan, 1973.8.28, T. Nambu leg. /Spec. Publ. Jap. Hymen. Ass., No. 31 (1985): p. 38

***Tiphia etizenensis*** 1985 [B1-288626]

HOLOTYPE ♀. Hatogayu, Fukui Pref., Japan, 1963.7.14, K. Tsuneki leg. /Spec. Publ. Jap. Hymen. Ass., No. 31 (1985): p. 47

***Tiphia hanedai*** 1985 [B1-288627]

HOLOTYPE ♀. Mt. Djohodzi, Fukui Pref., Japan, 1981.9.7, Y. Haneda leg. /Spec. Publ. Jap. Hymen. Ass., No. 31 (1985): p. 35

***Tiphia higoensis*** 1985 [B1-288628]

HOLOTYPE ♂. Gokanoshō, Kumamoto Pref., Japan, 1981.7.31, C. Nozaka leg. /Spec. Publ. Jap. Hymen. Ass., No. 31 (1985): p. 56

The holotype data conflicts with the published data ("1981.8.2").

***Tiphia ifri*** 1985 [B1-288629]

HOLOTYPE ♀. Mt. Ifri, Fukui Pref., Japan, 1972.9.3, K. Tsuneki leg. /Spec. Publ. Jap. Hymen. Ass., No. 31 (1985): p. 49

***Tiphia ifri*** 1985 [B1-288630]

PARATYPE ♂. Mt. Ifri, Fukui Pref., Japan, 1972.9.3, K. Tsuneki leg. /Spec. Publ. Jap. Hymen. Ass., No. 31 (1985): p. 49

The left fore and hind wings of the paratype are glued to the data label.

***Tiphia imadjo*** 1985 [B1-288631]

HOLOTYPE ♂. Imadjo, Mt. Hachibuse, Fukui Pref., Japan, 1981.8.14, T. Murota leg. /Spec. Publ. Jap. Hymen. Ass., No. 31 (1985): p. 28

***Tiphia iriomotensis*** 1985 [B1-288632]

HOLOTYPE ♂. Is. Iriomote, Okinawa Pref., Japan, 1983.6.3, Y. Haneda leg. /Spec. Publ. Jap. Hymen. Ass., No. 31 (1985): p. 55

***Tiphia ishigakiensis*** 1985 [B1-288633]

HOLOTYPE ♀. Is. Ishigaki, Okinawa Pref., Japan, 1978.8.28, T. Nambu leg. /Spec. Publ. Jap. Hymen. Ass., No. 31 (1985): p. 32

***Tiphia ishigakiensis*** 1985 [B1-288634]

PARATYPE ♂. Is. Ishigaki, Okinawa Pref., Japan, 1978.8.28, T. Nambu leg. /Spec. Publ. Jap. Hymen. Ass., No. 31 (1985): p. 32

***Tiphia juliana fuzanensis*** 1986 [B1-288635]

HOLOTYPE ♂. Fuzan, Korea, 1985.8.4, T. Tano leg. /Spec. Publ. Jap. Hymen. Ass., No. 32 (1986): p. 7

***Tiphia kaiensis*** 1985 [B1-288636]

HOLOTYPE ♀. Minamitsuru-gun, Yamanashi Pref., Japan, 1974.9.3, H. Suda leg. /Spec. Publ. Jap. Hymen. Ass., No. 31 (1985): p. 34

***Tiphia kawamurai*** 1986 [B1-288637]

HOLOTYPE ♂. Mt. Tebako, near Mt. Tsurugi, Tokushima Pref., Japan, 1957.8.9, K. Kawamura leg. /Spec. Publ. Jap. Hymen. Ass., No. 32 (1986): p. 7

***Tiphia kisoensis*** 1985 [B1-288638]

HOLOTYPE ♂. Komagatake Highland, Nagano Pref., Japan, 1975.8.8, H. Suda leg. /Spec. Publ. Jap. Hymen. Ass., No. 31 (1985): p. 58

*Tiphia kisukei* 1985 [B1-288639]

HOLOTYPE ♂. Koike, Fukui Pref., Japan, 1972.8.19, K. Tsuneki leg. /Spec. Publ. Jap. Hymen. Ass., No. 31 (1985): p. 57

*Tiphia kisukei* 1985 [B1-288640]

PARATYPE ♂. Koike, Fukui Pref., Japan, 1972.8.17, K. Tsuneki leg. /Spec. Publ. Jap. Hymen. Ass., No. 31 (1985): p. 57

*Tiphia kisukei* 1985 [B1-288641]

PARATYPE ♂. Koike, Fukui Pref., Japan, 1957.8.30, K. Tsuneki leg. /Spec. Publ. Jap. Hymen. Ass., No. 31 (1985): p. 57

*Tiphia komoronis* 1985 [B1-288642]

HOLOTYPE ♀. Kurumazaka-Pass, Nagano Pref., Japan, 1976.8.26, H. Suda leg. /Spec. Publ. Jap. Hymen. Ass., No. 31 (1985): p. 48

*Tiphia levisternalis* 1985 [B1-288643]

HOLOTYPE ♀. Ohno, Fukui Pref., Japan, 1963.9.24, Y. Haneda leg. /Spec. Publ. Jap. Hymen. Ass., No. 31 (1985): p. 25

*Tiphia levisternalis* 1985 [B1-288644]

PARATYPE ♂. Sanrihama, Fukui Pref., Japan, 1973.9.9, K. Tsuneki leg. /Spec. Publ. Jap. Hymen. Ass., No. 31 (1985): p. 25

*Tiphia levisternalis* 1985 [B1-288645]

PARATYPE ♂. Shimoutinami, Fukui Pref., Japan, 1970.8.22, K. Tsuneki leg. /Spec. Publ. Jap. Hymen. Ass., No. 31 (1985): p. 25

*Tiphia levisternalis* 1985 [B1-288646]

PARATYPE ♂. Mt. Onishi, Mts. Iide, Niigata Pref., Japan, 1979.9.5, K. Baba leg. /Spec. Publ. Jap. Hymen. Ass., No. 31 (1985): p. 25

*Tiphia magnoliae* 1985 [B1-288647]

HOLOTYPE ♀. Mt. Amagi, Shizuoka Pref., Japan, 1974.8.22, K. Tsuneki leg. /Spec. Publ. Jap. Hymen. Ass., No. 31 (1985): p. 41

*Tiphia mongolica* 1986 [B1-288648]

HOLOTYPE ♂. Apaka, Mongolia, 1939.6.20, K. Tsuneki leg. /Spec. Publ. Jap. Hymen. Ass., No. 32 (1986): p. 2  
All wings of the holotype are glued to the data label.

*Tiphia murotai* 1985 [B1-288649]

HOLOTYPE ♀. Hayashidani Valley, Fukui Pref., Japan, 1982.9.14, T. Murota leg. /Spec. Publ. Jap. Hymen. Ass., No. 31 (1985): p. 38

*Tiphia nambui* 1985 [B1-288650]

HOLOTYPE ♂. Shinrin Park, Saitama Pref., Japan, 1974.9.19, T. Nambu leg. /Spec. Publ. Jap. Hymen. Ass., No. 31 (1985): p. 62

The right antenna of the holotype is glued to the data label.

*Tiphia nipponica* 1985 [B1-288651]

HOLOTYPE ♀. Mt. Ifuri, Fukui Pref., Japan, 1972.9.3, K. Tsuneki leg. /Spec. Publ. Jap. Hymen. Ass., No. 31 (1985): p. 51

*Tiphia nipponica* 1985 [B1-288652]

PARATYPE ♀. Mt. Ifuri, Fukui Pref., Japan, 1972.9.3, K. Tsuneki leg. /Spec. Publ. Jap. Hymen. Ass., No. 31 (1985): p. 51

*Tiphia nipponica* 1985 [B1-288653]

PARATYPE ♀. Mt. Aoba, Fukui Pref., Japan, 1963.7.27, K. Tsuneki leg. /Spec. Publ. Jap. Hymen. Ass., No. 31 (1985): p. 51

*Tiphia oblongata* 1985 [B1-288654]

HOLOTYPE ♀. Ohno, Fukui Pref., Japan, 1975.9.15, Y. Haneda leg. /Spec. Publ. Jap. Hymen. Ass., No. 31 (1985): p. 27

The left antenna of the holotype is glued to the data label.

*Tiphia oblongata* 1985 [B1-288655]

PARATYPE ♂. Mt. Aoba, Fukui Pref., Japan, 1970.8.10, K. Tsuneki leg. /Spec. Publ. Jap. Hymen. Ass., No. 31 (1985): p. 27

*Tiphia ogurai* 1986 [B1-288656]

HOLOTYPE ♀. Seoul, Korea, 1943.7.16, K. Tsuneki leg. /Spec. Publ. Jap. Hymen. Ass., No. 32 (1986): p. 3

*Tiphia okinawana* 1985 [B1-288657]

HOLOTYPE ♂. Is. Okinawa, Okinawa Pref., Japan, 1972.8.9, T. Nambu leg. /Spec. Publ. Jap. Hymen. Ass., No. 31 (1985): p. 59

*Tiphia okinawana* 1985 [B1-288658]

PARATYPE ♂. Is. Okinawa, Okinawa Pref., Japan, 1972.8.9, T. Nambu leg. /Spec. Publ. Jap. Hymen. Ass., No. 31 (1985): p. 59

The genitalia of the paratype are mounted separately on a card attached to the pin on which the specimen is mounted.

*Tiphia okinawana erabuensis* 1985 [B1-288659]

HOLOTYPE ♂. Is. Okinawa, Okinawa Pref., Japan, 1972.8.3, T. Nambu leg. /Spec. Publ. Jap. Hymen. Ass., No. 31 (1985): p. 60

*Tiphia rufomandibulata yonagunia* 1985 [B1-288660]

HOLOTYPE ♂. Is. Yonaguni, Okinawa Pref., Japan, 1984.7.23, C. Nozaka leg. /Spec. Publ. Jap. Hymen. Ass., No. 31 (1985): p. 29

*Tiphia rufomandibulata yonagunia* 1985 [B1-288661]

PARATYPE ♂. Is. Yonaguni, Okinawa Pref., Japan, 1984.7.23, C. Nozaka leg. /Spec. Publ. Jap. Hymen. Ass., No. 31 (1985): p. 29

*Tiphia rufotibiata* 1985 [B1-288662]

HOLOTYPE ♀. Izumi-mura, Fukui Pref., Japan, 1982.9.15, K. Tsuneki leg. /Spec. Publ. Jap. Hymen. Ass., No. 31 (1985): p. 36

*Tiphia rufotibiata* 1985 [B1-288663]

PARATYPE ♂. Toyama City, Toyama Pref., Japan, ????.???.??, ?? leg. /Spec. Publ. Jap. Hymen. Ass., No. 31 (1985): p. 36

This specimen have no date-data and collector name on the label.

*Tiphia sakurae* 1985 [B1-288664]

HOLOTYPE ♂. Iino, Chiba Pref., Japan, 1973.7.23, H. Suda leg. /Spec. Publ. Jap. Hymen. Ass., No. 31 (1985): p. 61

*Tiphia saohime* 1985 [B1-288665]

HOLOTYPE ♀. Mt. Aoba, Fukui Pref., Japan, 1971.8.5, K. Tsuneki leg. /Spec. Publ. Jap. Hymen. Ass., No. 31 (1985): p. 48

*Tiphia seoulensis* 1986 [B1-288666]

HOLOTYPE ♀. Seoul, Korea, 1942.8.20, K. Tsuneki leg. /Spec. Publ. Jap. Hymen. Ass., No. 32 (1986): p. 6

*Tiphia sudai* 1985 [B1-288667]

HOLOTYPE ♂. Johnai, Chiba Pref., Japan, 1974.9.23, H. Suda leg. /Spec. Publ. Jap. Hymen. Ass., No. 31 (1985): p. 46

*Tiphia sudai* 1985 [B1-288668]

PARATYPE ♂. Johnai, Chiba Pref., Japan, 1974.9.23, H. Suda leg. /Spec. Publ. Jap. Hymen. Ass., No. 31 (1985): p. 46

*Tiphia teranishii* 1985 [B1-288669]

HOLOTYPE ♀. Toyama City, Toyama Pref., Japan, 1958.8.20, K. Tsuneki leg. /Spec. Publ. Jap. Hymen. Ass., No. 31 (1985): p. 31

*Tiphia teranishii* 1985 [B1-288670]

PARATYPE ♀. Tanihama, Niigata Pref., Japan, 1959.8.22, K. Baba leg. /Spec. Publ. Jap. Hymen. Ass., No. 31 (1985): p. 31

*Tiphia tokunoshimana* 1985 [B1-288672]

HOLOTYPE ♂. Is. Tokunoshima, Kagoshima Pref., Japan, 1972.8.2, T. Nambu leg. /Spec. Publ. Jap. Hymen. Ass., No. 31 (1985): p. 63

***Tiphia vulgata*** 1985 [B1-288673]

HOLOTYPE ♀. Yamanaka, Mishima, Shizuoka Pref., Japan, 1984.6.6, K. Tsuneki leg. /Spec. Publ. Jap. Hymen. Ass., No. 31 (1985): p. 39

***Tiphia yoichii*** 1986 [B1-288674]

HOLOTYPE ♂. Kurakake-Hill, Tochigi Pref., Japan, 1936.5.10, K. Tsuneki leg. /Spec. Publ. Jap. Hymen. Ass., No. 32 (1986): p. 12

***Tiphia yonaguniensis*** 1985 [B1-288675]

HOLOTYPE ♀. Is. Yonaguni, Okinawa Pref., Japan, 1984.7.24, C. Nozaka leg. /Spec. Publ. Jap. Hymen. Ass., No. 31 (1985): p. 54

***Tiphia yonaguniensis*** 1985 [B1-288676]

PARATYPE ♂. Is. Yonaguni, Okinawa Pref., Japan, 1984.7.24, C. Nozaka leg. /Spec. Publ. Jap. Hymen. Ass., No. 31 (1985): p. 54

Supefamily Trigonalyoidea

Family Trigonalysidae

***Orthogonalos fukuensis*** 1991 [B1-288677]

HOLOTYPE ♂. Mt. Akausagi, Fukui Pref., Japan, 1976.6.18, H. Kurokawa leg. /Spec. Publ. Jap. Hymen. Ass., No. 37 (1991): p. 28

***Teranishia nipponica*** 1991 [B1-288678]

HOLOTYPE ♂. Arashi, Fukui Pref., Japan, 1977.6.28, T. Murota leg. /Spec. Publ. Jap. Hymen. Ass., No. 37 (1991): p. 15

The specimen has holotype label, but the data conflicts with the publish data of holotype ("Koike, Fukui Pref., 1979.8.7, C.Nozaka leg."). As the data agrees with a paratype data, Tsuneki has in error labelled the specimens as holotype.

***Teranishia nipponica*** 1991 [B1-288679]

PARATYPE ♀. Arashi, Fukui Pref., Japan, 1973.9.15, K. Tsuneki leg. /Spec. Publ. Jap. Hymen. Ass., No. 37 (1991): p. 15

Superfamily Orussoidea

Family Orussidae

***Orussus rufipes*** 1963 [B1-288680]

HOLOTYPE ♂. Towada, Aomori Pref., Japan, 1961.7.16, K. Shimoyama leg. /Etizenia, No. 2 (1963): p. 1

***Orussus rufipes*** 1963 [B1-288681]

PARATYPE ♂. Towada, Aomori Pref., Japan, 1961.7.16, K. Shimoyama leg. /Etizenia, No. 2 (1963): p. 1

## REFERENCES

Tsuneki 's papers which deal with the taxa housed in MNHAH are listed chronologically.

1947. Crabronidae fauna of Korea. Jour. Fac. Sci. Hokkaido Univ., Ser. VI, Zool., Vol. 9, No. 3: 281-295.

On the wasps of the genus *Crabro* s. 1. from Hokkaido, with descriptions of new species and subspecies. Jour. Fac. Sci., Hokkaido Univ., Ser. VI, Zool., Vol. 9, No. 4: 397-435.

1952. The genus *Rhopalum* Kirby (1829) of Japan, Korea, Saghalien and the Kuriles, with a suggested reclassification of the subgenera and descriptions of four new species (Hymenoptera, Sphecidae, Crabroninae). Jour. Fac. Sci., Hokkaido Univ., Ser. VI, Zool., Vol. 11, No. 1: 110-125.

1954. The genus *Stigmus* Panzer of Europe and Asia, with descriptions of eight new species. Mem. Fac. Lib. Arts, Fukui Univ., Ser. II, Nat. Sci., No. 3, Pt. 1: 1-38.

The genus *Crossocerus* Lepeletier et Brullé of Japan, Korea, Saghalien and the Kuriles. Mem. Fac. Lib. Arts, Fukui Univ., Ser. II, Nat. Sci., No. 3, Pt. 3: 57-78.

Descriptions and records of wasps of the Families Chrysididae and Sphecidae of Japan (Hymenoptera). Mem. Fac. Lib. Arts, Fukui Univ., Ser. II, Nat. Sci., No. 4, Pt. 5: 37-55.

1955. Crabroninae of Nikko, Japan, with notes on their biology and description of a new species (Hymen., Sphecidae) (Collaborated with E. Tanaka). Kontyu, Vol. 23 (1): 21-27.

Two new species of the genus *Rhopalum* from Japan (Hymenoptera, Sphecidae, Crabroninae). Kontyu, Vol. 23 (3): 105-108.

The genus *Passaloecus* Shuckard of Japan, with ethological observations on some species. Mem. Fac. Lib. Arts, Fukui Univ., Ser. II, Nat. Sci., No. 5, Pt. 1: 1-21.

1956. Two new species of the genus *Nitela* in Japan (Hymen., Sphecidae, Larrinae) . Akitu, Vol. 5: 33-35.

Taxonomical notes on some species of the Japanese *Rhopalum* (Hymenoptera, Sphecidae, Crabroninae). Akitu, Vol. 5: 67-69.

The occurrence of the genus *Spilomena* Shuckard in Japan, with descriptions of two new species (Hymenoptera, Sphecidae). Kontyu, Vol. 24 (2): 73-76.

Die *Trypoxylonen* der nordöstlichen Gebiete Asiens (Hymenoptera, Sphecidae, Trypoxyloninae). Mem. Fac. Lib. Arts, Fukui Univ., Ser. II, Nat. Sci., No. 6, Pt. 1: 1-42.

1957. On *Sphex* (s. str.) *fukuianus* sp. nov. found in Japan (Hym., Sphecidae). Kontyu, Vol. 25 (2): 46-49.

1958. Eine neue Art von *Trypoxylon* aus Japan (Hymenoptera, Sphecidae). Akitu, Vol. 7, No. 1: 7-8.

On the discovery of *Nesocrabro* in Japan, with the description of a new species. Kontyu, Vol. 26 (4): 197-199.

1959. Une nouvelle espèce du Crabronien du Japon (Hymenoptera, Sphecidae). Akitu, Vol. 8: 83-84.

Contributions to the knowledge of the Cleptinae and Pseninae faunas of Japan and Korea. Mem. Fac. Lib. Arts, Fukui Univ., Ser. I, Nat. Sci., No. 9: 1-78.

1960. Further descriptions on *Rhopalum* in Japan (Hym., Sphec., Crabroninae). Akitu. Vol. 9: 51-52.

Subspecies and their distribution. A case in *Crossocerus capitosus* Shuckard (Hym. Sphecidae) in Japan. Kontyu, Vol. 28 (3): 193-197.

Taxonomic notes on some Japanese species of Aculeate Hymenoptera, with the description of a new species of the genus *Trypoxylon*. Kontyu, Vol. 28 (4): 239-243

1961. Studies on *Cerceris* of North Eastern Asia (Hymenoptera, Sphecidae). Mem. Fac. Lib. Arts, Fukui Univ., Ser. II, Nat. Sci., No. 11, Pt. 1: 1-72.

1963. The tribe Gorytini of Japan and Korea (Hymenoptera, Sphecidae). Etizenia, No. 1: 1-20.

A contribution to the knowledge of Orussidae in Japan, with the description of a new species (Hymenoptera, Symphyta). Etizenia, No. 2: 1-5.

1964. The genus *Tachytes* Panzer of Japan and Korea. Etizenia, No. 5: 1-11.

Taxonomic studies on some Sphecidae in Japan. Etizenia. No. 6: 1-6.

An interesting new species of the genus *Psen* captured in Japan, with the erection of a new subgenus (Hym., Sphec., Pemphredoninae). Ins. Matsumurana, Vol. 27: 12-15.

1966. Taxonomic notes on *Trypoxylon* of Formosa and the Ryukyus with descriptions of new species and subspecies (Hymenoptera, Sphecidae). Etizenia, No. 13: 1-19.

New species of the genera *Trypoxylon* and *Oxybelus* in Japan, with some biological notes (Hym., Sphecidae). Etizenia, No. 16: 1-8.

The Japanese subspecies of *Crossocerus heydenii* Kohl and a description of a new species of *Crossocerus* (Hym., Sphecidae, Crabroninae). Life Study (Fukui), Vol. 10(1-4): 35-37.

1967. Studies on the Formosan Sphecidae (III). The subfamily Pemphredoninae (Hymenoptera). Etizenia, No. 24: 1-11.

1968. Descriptions and records of some fossorial wasps in Japan (Hym., Sphecidae). Etizenia, No. 27: 1-8.

Some Hymenoptera from Quelpart Island, South Korea. Life Study (Fukui), Vol. 12 (3-4): 49-54.

1970. Gleanings on the bionomics of the East-Asiatic non-social wasps (Hymenoptera). VII. On some species of Diplopterous wasps, with the description of a new species. Etizenia, No. 46: 1-25.

Two new subspecies of *Bembecinus anthracinus* (Handlirsch, 1892) from the Ogasawara Islands (Hym., Sphecidae, Nyssoninae). Etizenia, No. 47: 1-7.

Change of the taxonomic position of three species of Crabronini in Japan, with notes on some species (Hym., Sphecidae). Etizenia, No. 50: 1-8.

1971. Revision der *Spilomena*-Arten Japans, mit den Beschreibungen von drei neuen Arten (Hym., Sphecidae). Life Study (Fukui), Vol. 15 (1-2): 8-16.

- Studies on the Formosan Sphecidae (XI). A supplement to the subfamily Larrinae (Hymenoptera). *Etizenia*, No. 55: 1-21.
- Studies on the Formosan Sphecidae (XII). A supplement to the subfamily Nyssoninae, with the *Bembecinus*-species of the southern Ryukyus (Hymenoptera). *Etizenia*, No. 56: 1-15.
- Studies on the Formosan Sphecidae (XIII). A supplement to the subfamily Pemphredoninae (Hym.), with a key to the Formosan species. *Etizenia*, No. 57: 1-21.
1972. On some species of the Japanese Sphecidae (Hym.), notes and descriptions. *Etizenia*, No. 59: 1-20.
- Studies on the Formosan Sphecidae (XIV), notes on some specimens newly examined, with a description of a related Japanese subspecies (Hymenoptera). *Etizenia*, No. 60: 1-13.
- Studies on the Mutillidae of Japan (Hymenoptera). *Etizenia*, No. 61: 1-26.
- Studies on the Scoliid wasps of Eastern Asia (Hymenoptera). *Etizenia*, No. 62: 1-41.
1973. New and the first recorded species and subspecies of Sphecidae and Mutillidae from Japan, with taxonomic notes on some species. *Etizenia*, No. 65: 1-28.
- Studies on *Nomada* of Japan (Hym., Apidae). *Etizenia* No. 66 (I and II): 1-141.
1975. Corrigenda and addenda to the studies on *Nomada* (Hymenoptera, Apidae) of Japan. *Kontyu*, Vol. 43 (4): 463-477.
1976. New species of the genus *Nomada* Scopoli (Hymenoptera, Apidae) in Japan. *Kontyu*, Vol. 44 (1): 49-64.
- Additions to the *Nomada*-fauna of Japan (Hymenoptera, Apidae). *Kontyu*, Vol. 44 (2): 150-158.
- A fourth Contribution to the Knowledge of Sphecidae (Hymenoptera) of Manchuria, with remarks on some species of the adjacent regions. *Kontyu*, Vol. 44 (3): 288-310.
- New taxa of genus *Crossocerus* of Japan, with a note on the remarkable maculation in the female of *C. walkeri* (Shuckard) (Hymenoptera: Sphecidae: Crabroninae). *Trans. Shikoku Ent. Soc.*, 13: 71-76.
1977. Two new species of the genus *Alysson* Panzer (Hymenoptera, Sphecidae) in Japan. *Kontyu*, Vol. 45 (1): 26-32.
- Further notes and descriptions on some Formosan Sphecidae (Hymenoptera). *Spec. Publ. Jap. Hymen. Ass.*, No. 2: 1-32.
- On the local races of *Ectemnius* (*Hypocrabro*) *schlettereri* (Kohl, 1888) in Eastern Asia (Hymenoptera, Sphecidae, Crabroninae). *Spec. Publ. Jap. Hymen. Ass.*, No. 4: 1-12.
- Taxonomic notes on some Crabronine wasps of Japan and Korea (Hymenoptera, Sphecidae). *Spec. Publ. Jap. Hymen. Ass.*, No. 5: 1-9.
- Descriptions of a new species and a new subspecies of Pemphredoninae found in Japan (Hymenoptera, Sphecidae). *Spec. Publ. Jap. Hymen. Ass.*, No. 5: 10-14.
- Supplements to the Giordani Soika's "*Symmorphus* in Japan" (Hymenoptera, Eumenidae). *Spec. Publ. Jap. Hymen. Ass.*, No. 5: 15-20.

Recombination of sexes among four species of *Psen* (Hymenoptera, Sphecidae) occurring in Japan. Kontyu , Vol. 45(3): 360-371.

1978. On two species of Sphecidae in Japan (Hymenoptera). Trans. Shikoku Ent. Soc., 14 (1-2): 81-83.
1979. Sphecidae and Chrysididae collected by Dr. K. Baba in northern part of Japan Proper and Hokkaido, with descriptions of two new species. Essa Konchu Dokokai Kaiho, Vol. 50: 9-14.
1981. Revision of the *Trypoxylon* species of Japan and northeastern part of the Asiatic Continent, with comments on some species of Europe (Hymenoptera, Sphecidae). Spec. Publ. Jap. Hymen. Ass., No. 17: 1-92.
1982. A new species of Scoliidae from Japan (Hymenoptera). Spec. Publ. Jap. Hymen. Ass., No. 23: 3-5.
- Studies on the new material of Sphecidae, Chrysididae and Mutillidae from Formosa and the Southern Ryukyus (Hymenoptera). Spec. Publ. Jap. Hymen. Ass., No. 23: 15-45.
- Sphecidae and Scoliidae collected by Dr. K. Baba in the Southern Ryukyus (Hymenoptera). Spec. Publ. Jap. Hymen. Ass., No. 23: 46-52.
- Cerceris yuwanensis* sp. nov. from Island Amami-Oshima, the Ryukyus (Hymenoptera, Sphecidae). Spec. Publ. Jap. Hymen. Ass., No. 23: 77-78.
1983. Revision of the holotype of *Odontolarra* (=Lyroda) *higra* Cameron, with remarks on its subspecies and the description of a closely related new species from Japan (Hymenoptera, Sphecidae). Spec. Publ. Jap. Hymen. Ass., No. 25: 57-62.
- A new species of *Psen* (*Psen*) found in Japan (Hym. Sphec., Pemphredoninae). Spec. Publ. Jap. Hymen. Ass., No. 25: 63-66.
- A contribution to the knowledges of *Sphecodes* Latreille of Japan (Hymenoptera, Halictidae). Spec. Publ. Jap. Hymen. Ass., No. 26: 1-72.
1984. Solitary wasps newly collected in the Ogasawara or the Bonin Islands (Hymenoptera). Spec. Publ. Jap. Hymen. Ass., No. 28: 1-12.
- On some species of *Sphecodes* of Japan, with descriptions of new species (Hym., Apoidea). Spec. Publ. Jap. Hymen. Ass., No. 30: 1-10.
1985. Taxonomic studies on the Japanese species of the genus *Tiphia* (I) revision and addition (Hymenoptera, Tiphidae). Spec. Publ. Jap. Hymen. Ass., No. 31: 1-90.
1986. New species and subspecies of the aculeate Hymenoptera from East Asia, with some synonyms, specific remarks and distributional data. Spec. Publ. Jap. Hymen. Ass., No. 32: 1-60.
1989. A study on the Pompilidae of Taiwan (Hymenoptera). Spec. Publ. Jap. Hymen. Ass., No. 35: 1-180.
1990. The Pompilidae of the Ryukyus (Hymenoptera). Spec. Publ. Jap. Hymen. Ass., No. 36: 1-65.
- Descriptions of two new subgenera, six new species and one undescribed female of the Sphecidae from the Island of Okinawa, the Ryukyus (Hymenoptera). Spec. Publ. Jap. Hymen. Ass., No. 36: 81-99.



A new species of *Passaloecus* from Japan, with its biology (Hym., Specidae, Pemphredoninae). Spec. Publ. Jap. Hymen. Ass., No. 36: 102-105.

1991. Revision of the Trigonalidae of Japan and her adjacent territories (Hymenoptera). Spec. Publ. Jap. Hymen. Ass., No. 37: 1-68.

1992. Two new species of *Crossocerus* found in Japan (Sphecoidea: Crabronidae). Spec. Publ. Jap. Hymen. Ass., No. 38: 50-53.

1993. On some Taiwanese Mutillidae, collected in 1976 by Mr. T. Murota, with descriptions of new taxa (Hymenoptera). Spec. Publ. Jap. Hymen. Ass., No. 41: 39-50.

## INDEX

- Alysson japonicus*, 23, Pl. 6, fig. 52  
*Alysson monticola*, 23  
*Alysson monticola ezoensis*, 23  
*Alysson sibiricus nipponius*, 23, Pl. 6, fig. 53  
*Ampulex albobarbata*, 14, Pl. 4, fig. 27  
*Ampulex tridentata*, 14  
**AMPULICIDAE**, 14  
*Anoplius iriomotensis*, 31  
*Anoplius ishigakianus*, 31  
*Anoplius nozakae*, 31  
*Anoplius nozakae miyakonis*, 32  
*Anoplius sakishimanus*, 32  
*Anoplius surusumi yayeyamanus*, 32  
*Anoplius tanoi*, 32  
*Anoplius valdezi ryukyuensis*, 32, Pl. 8, fig. 78  
*Anoplius yonagunianus*, 32  
**ANTHOPHORIDAE**, 3  
*Argogorytes nipponis*, 23, Pl. 6, fig. 54  
*Auplopus murotai*, 32  
*Auplopus nozakae*, 32  
*Auplopus nozakae okinawanus*, 32  
*Bembecinus anthracinus mukodzimaensis*, 23  
*Bembecinus tanoi*, 24, Pl. 6, fig. 55  
*Campsomeris aburasakana*, 33  
*Campsomeris mojiensis ryukyuana*, 33, Pl. 8, fig. 89  
*Carinostigmus nozakai*, 24  
*Carinostigmus tanoi*, 24, Pl. 7, fig. 62  
*Cerceris hortivaga amamiensis*, 29, Pl. 7, fig. 70  
*Cerceris kumamotoensis*, 29, Pl. 7, fig. 71  
*Cerceris nipponensis*, 29  
*Cerceris okumurai*, 29, Pl. 7, fig. 72  
*Cerceris saishuensis*, 29  
*Cerceris shirozui*, 29  
*Cerceris yuwanensis*, 29, Pl. 7, fig. 73  
*Ceropales pygmaeus japonicus*, 32  
*Crabro aino*, 14  
*Crabro calceatus*, 14  
*Crabro flavitarsus*, 15  
*Crabro koreanus*, 15, Pl. 4, fig. 28  
*Crabro laticornis*, 15  
*Crabro opacifrons*, 15  
*Crabro uchidai*, 15  
*Crabro yanoi*, 15  
*Crabro yasumatsui*, 15  
**CRABRONIDAE**, 14  
*Crossocerus ambiguus hokkaidoensis*, 16  
*Crossocerus babai*, 16  
*Crossocerus breviclypeatus*, 16, Pl. 4, fig. 29  
*Crossocerus capitosus yamato*, 16, Pl. 4, fig. 30  
*Crossocerus capitosus yezo*, 16  
*Crossocerus congener fukuensis*, 16  
*Crossocerus dentsukanus*, 16  
*Crossocerus etizenensis*, 16  
*Crossocerus hakusanus*, 16  
*Crossocerus hakusanus sungkangensis*, 16  
*Crossocerus heydenii nipponis*, 16, Pl. 5, fig. 31  
*Crossocerus leclercqi*, 16  
*Crossocerus minamikawai*, 16  
*Crossocerus minor*, 16  
*Crossocerus murotai*, 16  
*Crossocerus nambui*, 17  
*Crossocerus nikkoensis*, 17  
*Crossocerus pilicornis*, 17  
*Crossocerus rubromaculatus*, 17  
*Crossocerus tanakai*, 17  
*Crossocerus tyuzendzianus*, 17  
*Crossocerus uchidai hondonis*, 17  
*Crossocerus verhoeffi sudai*, 17, Pl. 5, fig. 32  
*Dienoplus tumidus japonensis*, 24, Pl. 6, fig. 56  
*Ectemnius cavifrons nipponensis*, 17, Pl. 5, fig. 33  
*Ectemnius flavohirtus*, 17  
*Ectemnius laevidorsis*, 17  
*Ectemnius rubicola nipponis*, 17, Pl. 5, fig. 34  
*Ectemnius schlettereri ishigakiensis*, 17  
*Ectemnius schlettereri japonicus*, 17, Pl. 5, fig. 35  
*Ectemnius shimoyamai*, 17  
*Ectemnius spinipes sculpturatus*, 17  
**EUMENIDAE**, 29  
*Ferreola yayeyamaensis*, 32  
*Ferreoloides ryukyuensis*, 33, Pl. 8, fig. 79  
*Gorytes aino*, 24  
*Gorytes fulvohirtus*, 24, Pl. 6, fig. 57  
*Gorytes hakutozanus*, 24, Pl. 6, fig. 58  
*Gorytes ishigakiensis*, 24, Pl. 6, fig. 59  
*Gorytes takeuchii*, 24  
**HALICTIDAE**, 8  
*Hatanomus granulatus*, 33  
*Hemipepsis amamiensis*, 33  
*Hemipepsis apicata*, 33  
*Hemipepsis hanedai*, 33  
*Hemipepsis yayeyamana*, 33, Pl. 8, fig. 80  
*Homonotus okinawanus*, 33

*Lestica hentona*, 18  
*Lestica okinawana*, 18, Pl. 5, fig. 36  
*Lestica rufigaster*, 18  
*Lestiphorus bilunulatus yamatonis*, 24, Pl. 6, fig. 60  
*Liacos melanogaster*, 33, Pl. 8, fig. 82  
*Liris hanedai*, 18  
*Liris iriomotensis*, 18  
*Liris subtessellatus ogasawarae*, 18, Pl. 5, fig. 37  
*Lyroda fukuensis*, 18, Pl. 5, fig. 38  
*Morochares nigripennis okinawana*, 33  
*Morochares nigripennis yayeyamana*, 33, Pl. 8, fig. 81  
**MUTILLIDAE, 31**  
*Nannodynerus coreanus*, 29  
*Nitela ohgushii*, 18  
*Nitela yasumatsui*, 18, Pl. 5, fig. 39  
*Nitela yasumatsui taiwana*, 18  
*Nomada abtana*, 3  
*Nomada aino*, 3  
*Nomada alboguttata etizenensis*, 3, Pl. 3, fig. 1  
*Nomada arasiana*, 3  
*Nomada asozuana*, 3, Pl. 3, fig. 2  
*Nomada aswensis*, 3  
*Nomada babai*, 3  
*Nomada buyoo*, 3  
*Nomada diervillae*, 3, Pl. 3, fig. 3  
*Nomada esana*, 3, Pl. 3, fig. 4  
*Nomada etigonis*, 3  
*Nomada floricola*, 3  
*Nomada fukuiana*, 3, Pl. 3, fig. 5  
*Nomada ginran*, 4  
*Nomada hackoda*, 4  
*Nomada hakodatensis*, 4  
*Nomada hanedai*, 4  
*Nomada hiackogawa*, 4, Pl. 3, fig. 6  
*Nomada icazti*, 4  
*Nomada iwakiyamana*, 4  
*Nomada kinosukei*, 4  
*Nomada koikensis*, 4  
*Nomada koreana*, 4, Pl. 3, fig. 7  
*Nomada kotomaria*, 4, Pl. 3, fig. 8  
*Nomada kuro*, 4  
*Nomada mamiyai*, 4  
*Nomada melanura*, 5  
*Nomada melanura hakusana*, 5, Pl. 3, fig. 9  
*Nomada miensis*, 5  
*Nomada mishimana*, 5  
*Nomada montverna*, 5  
*Nomada muinensis*, 5, Pl. 3, fig. 10  
*Nomada munakatai*, 5  
*Nomada murotai*, 5  
*Nomada mutsuensis*, 5, Pl. 3, fig. 11  
*Nomada nanaensis*, 6  
*Nomada nunobensis*, 6  
*Nomada nurukawa*, 6, Pl. 3, fig. 12  
*Nomada ohnonis*, 6  
*Nomada osimana*, 6  
*Nomada osimana oirasensis*, 6  
*Nomada pacifica*, 6, Pl. 3, fig. 13  
*Nomada panzeri orientis*, 6  
*Nomada pekingensis*, 6  
*Nomada pulawskii*, 6  
*Nomada rengnio*, 7  
*Nomada risiriensis*, 7  
*Nomada sabaensis*, 7  
*Nomada sakura*, 7, Pl. 3, fig. 14  
*Nomada shimoyamai*, 7  
*Nomada shoyozana*, 7  
*Nomada silvicola*, 7  
*Nomada sudai*, 7  
*Nomada sunayamana*, 7, Pl. 3, fig. 15  
*Nomada taicho*, 7  
*Nomada temmasana*, 7  
*Nomada tiendang*, 7  
*Nomada towada*, 7  
*Nomada tridentata*, 7  
*Nomada uzenis*, 7  
*Nomada wakasana*, 7  
*Nomada yagensis*, 7  
*Nomada yanoi*, 8, Pl. 4, fig. 16  
*Nomada yasha*, 8  
*Nomada yasuteyamana*, 8, Pl. 4, fig. 17  
*Nomada yunokawana*, 8, Pl. 4, fig. 18  
*Nysson trimaculatus japonicus*, 24, Pl. 7, fig. 61  
**NYSSONIDAE, 23**  
*Odontomutilla taiwaniana nipponica*, 31  
*Orthogonalos fukuensis*, 37, Pl. 8, fig. 86  
**ORUSSIDAE, 37**  
*Orussus rufipes*, 37, Pl. 8, fig. 87  
*Oxybelus nipponicus*, 18  
*Oxybelus sakuranus*, 18  
*Pasites maculatus koreanus*, 8  
*Pasites maculatus pekingensis*, 8, Pl. 4, fig. 19  
*Passaloecus alishanus*, 24  
*Passaloecus annulatus nipponicola*, 24  
*Passaloecus corniger hakusanicus*, 24  
*Passaloecus dubius*, 25, Pl. 7, fig. 63

- Passaloecus formosus*, 25  
*Passaloecus gracilis yamato*, 25  
*Passaloecus mishimaensis*, 25  
*Pemphredon sudai*, 26  
*Pemphredon sudaorum*, 26, Pl. 7, fig. 64
- PEMPHREDONIDAE**, 24
- PHILANTHIDAE**, 29  
*Pison hahadzimaense*, 18
- POMPILIDAE**, 31  
*Psen alticola*, 26  
*Psen aurifrons*, 26  
*Psen dzimm*, 26  
*Psen foveicornis*, 26  
*Psen hanedai*, 26  
*Psen mishimae*, 26  
*Psen miyagino*, 26  
*Psen nitidus hikosanus*, 27  
*Psen richardsi*, 27, Pl. 7, fig. 65  
*Psen seminitidus bettoh*, 27  
*Psen terayamai*, 27  
*Psen vanlithi*, 27  
*Psen vanlithi meridionalis*, 27  
*Psenulus fuscipes*, 27  
*Psenulus maculipes*, 27  
*Psenulus nikkoensis*, 27  
*Psenulus ogasawaranus*, 27  
*Psenulus okinawanus*, 27  
*Psenulus pallipes yamatonis*, 27  
*Psenulus sudaorum*, 27, Pl. 7, fig. 66  
*Psenulus tanakai*, 27  
*Psenulus yingfeng*, 27  
*Rhopalum ataiyai*, 19  
*Rhopalum ebetsuense*, 19  
*Rhopalum guttatum*, 19  
*Rhopalum hakodatense*, 19  
*Rhopalum hanedai*, 19  
*Rhopalum kuwayamai nikkoense*, 19, Pl. 5, fig. 40  
*Rhopalum nipponicum hokkaidense*, 19  
*Rhopalum okinawanum*, 19  
*Rhopalum succineicollarum*, 19, Pl. 5, fig. 41  
*Rhopalum venustum*, 19  
*Rhopalum watanabei*, 19  
*Sceliphron deforme nipponicum*, 29, Pl. 8, fig. 88
- SCOLIIDAE**, 33  
*Smicromyrme chihpenchia*, 31  
*Smicromyrme chuchiana*, 31  
*Smicromyrme fukudai*, 31  
*Smicromyrme momidziyama*, 31
- Smicromyrme taiwana*, 31
- SPHECIDAE**, 29  
*Sphecodes aino*, 8  
*Sphecodes akitanus*, 9  
*Sphecodes asakura*, 9  
*Sphecodes awaensis*, 9  
*Sphecodes baratonis*, 9  
*Sphecodes bipunctatus*, 9  
*Sphecodes breviclypeatus*, 9, Pl. 4, fig. 20  
*Sphecodes chibaensis*, 9, Pl. 4, fig. 21  
*Sphecodes chosensis*, 9  
*Sphecodes coarctatus*, 9  
*Sphecodes convergens*, 9  
*Sphecodes coptis*, 9  
*Sphecodes crassicornis*, 9  
*Sphecodes cristatus pekingensis*, 9, Pl. 4, fig. 22  
*Sphecodes daisi*, 10  
*Sphecodes duplipunctatus*, 10  
*Sphecodes dyozankeanus*, 10  
*Sphecodes etizenensis*, 10  
*Sphecodes fudzi*, 10, Pl. 4, fig. 23  
*Sphecodes fukuiensis*, 10  
*Sphecodes gayaensis*, 10  
*Sphecodes hanedai*, 10  
*Sphecodes hasshanus*, 10  
*Sphecodes hatogayuu*, 10  
*Sphecodes itidyo*, 11, Pl. 4, fig. 24  
*Sphecodes iwatensis*, 11  
*Sphecodes izumindus*, 11  
*Sphecodes kaiensis*, 11  
*Sphecodes kamafuse*, 11  
*Sphecodes kisukei*, 11  
*Sphecodes kitamius*, 11  
*Sphecodes koikensis*, 11  
*Sphecodes laticaudatus*, 11  
*Sphecodes maetai*, 11  
*Sphecodes maruyamanus*, 12  
*Sphecodes murotai*, 12  
*Sphecodes mutsu*, 12  
*Sphecodes mutsuoides*, 12  
*Sphecodes nambui*, 12  
*Sphecodes ohdeyamanus*, 12, Pl. 4, fig. 25  
*Sphecodes ohtsukius*, 12  
*Sphecodes okuyetsu*, 12  
*Sphecodes rikuchu*, 12  
*Sphecodes sabulosus*, 12  
*Sphecodes sapporensis*, 13  
*Sphecodes seoulensis*, 13

*Sphecodes shirozui*, 13  
*Sphecodes silvicola*, 13  
*Sphecodes sudai*, 13  
*Sphecodes sulcifera*, 13  
*Sphecodes taeguensis*, 14  
*Sphecodes taicho*, 14, Pl. 4, fig. 26  
*Sphecodes tanoi*, 14  
*Sphecodes temmasanus*, 14  
*Sphecodes utinamius*, 14  
*Sphex fukuianus*, 29, Pl. 8, fig. 90  
*Spilomena dedzcli*, 28  
*Spilomena djozankeianus*, 28  
*Spilomena japonica*, 28  
*Spilomena koikensis*, 28  
*Spilomena laeviceps*, 28  
*Spilomena nikkoensis*, 28, Pl. 7, fig. 67  
*Squamulotilla murotai*, 31  
*Stigmus convergens*, 28  
*Stigmus europaeus*, 28  
*Stigmus flavicornis*, 28  
*Stigmus iwatai*, 28, Pl. 7, fig. 68  
*Stigmus japonicus*, 28  
*Stigmus murotai*, 28  
*Stigmus quadriceps*, 28, Pl. 7, fig. 69  
*Stigmus shirozui*, 29  
*Stigmus verhoeffi*, 29  
*Symmorphus hakutozanus*, 30  
*Symmorphus iiyamai*, 30  
*Symmorphus mizuhonis*, 30  
*Symmorphus mutinensis yezoanus*, 30  
*Symmorphus nansetsurei*, 30, Pl. 7, fig. 74  
*Symmorphus piceanus*, 30  
*Symmorphus sassai*, 30  
*Symmorphus seoulensis*, 30  
*Symmorphus shiroyamai*, 30  
*Symmorphus sounkionis*, 30, Pl. 7, fig. 75  
*Tachysphex nigricolor lanhsuensis*, 19  
*Tachysphex sinensis yaeyamanus*, 19, Pl. 5, fig. 42  
*Tachysphex tinctipennis titidzimaensis*, 19  
*Tachytes fruticis*, 19, Pl. 5, fig. 43  
*Tachytes latifrons*, 20  
*Tachytes nipponicus*, 20, Pl. 5, fig. 44  
*Teranishia nipponica*, 37  
*Tiphia amagiana*, 34  
*Tiphia babai*, 34  
*Tiphia dzickok*, 34  
*Tiphia etizenensis*, 34  
*Tiphia hanedai*, 34  
*Tiphia higoensis*, 34  
*Tiphia ifri*, 34  
*Tiphia imadjo*, 34  
*Tiphia iriomotensis*, 34  
*Tiphia ishigakiensis*, 34  
*Tiphia juliana fuzanensis*, 34  
*Tiphia kaiensis*, 34  
*Tiphia kawamurai*, 34  
*Tiphia kisoensis*, 34  
*Tiphia kisukei*, 35  
*Tiphia komoronis*, 35, Pl. 8, fig. 83  
*Tiphia levisternalis*, 35  
*Tiphia magnoliae*, 35  
*Tiphia mongolica*, 35  
*Tiphia murotai*, 35  
*Tiphia nambui*, 35  
*Tiphia nipponica*, 35, Pl. 8, fig. 84  
*Tiphia oblongata*, 35  
*Tiphia ogurai*, 36  
*Tiphia okinawana*, 36  
*Tiphia okinawana erabuensis*, 36  
*Tiphia rufomandibulata yonagunia*, 36  
*Tiphia rufotibiata*, 36  
*Tiphia sakurae*, 36  
*Tiphia saohime*, 36  
*Tiphia seoulensis*, 36  
*Tiphia sudai*, 36, Pl. 8, fig. 85  
*Tiphia teranishii*, 36  
*Tiphia tokunoshimana*, 36  
*Tiphia vulgata*, 37  
*Tiphia yoichii*, 37  
*Tiphia yonaguniensis*, 37  
**TIPHIIDAE**, 34  
**TRIGONALYIDAE**, 37  
*Trogaspidia chiaiensis*, 31, Pl. 8, fig. 76  
*Trogaspidia fukudai*, 31, Pl. 8, fig. 77  
*Trogaspidia vallicola*, 31  
*Trypoxylon amamiense*, 20  
*Trypoxylon ambiguum*, 20  
*Trypoxylon chosenense*, 20  
*Trypoxylon clavicerum exiguum*, 20  
*Trypoxylon dubiosum*, 20  
*Trypoxylon figulus koma*, 20  
*Trypoxylon figulus yezo*, 20  
*Trypoxylon frigidum yamatonis*, 20  
*Trypoxylon fronticorne seoulense*, 20  
*Trypoxylon kodamanum*, 20  
*Trypoxylon koikense*, 20

*Trypoxylon konosuense*, 20  
*Trypoxylon mishimaensis*, 20  
*Trypoxylon monticola*, 21, Pl. 5, fig. 45  
*Trypoxylon nipponicum*, 21, Pl. 6, fig. 46  
*Trypoxylon pennsylvanicum japonense*, 21  
*Trypoxylon pulawskii*, 23, Pl. 6, fig. 47  
*Trypoxylon regium hatogayuum*, 23  
*Trypoxylon rufiventre*, 23, Pl. 6, fig. 48  
*Trypoxylon ryukyuense*, 23, Pl. 6, fig. 49  
*Trypoxylon saitamaense*, 23, Pl. 6, fig. 50  
*Trypoxylon sapporoense*, 23  
*Trypoxylon shimoyamai*, 23, Pl. 6, fig. 51

### Plate 3

- Fig. 1 *Nomada alboguttata etizenensis*
- Fig. 2 *Nomada asozuana*
- Fig. 3 *Nomada diervillae*
- Fig. 4 *Nomada esana*
- Fig. 5 *Nomada fukuiana*
- Fig. 6 *Nomada hiackogawa*
- Fig. 7 *Nomada koreana*
- Fig. 8 *Nomada kotomaria*
- Fig. 9 *Nomada melanura hakusana*
- Fig. 10 *Nomada muinensis*
- Fig. 11 *Nomada mutsuensis*
- Fig. 12 *Nomada nurukawa*
- Fig. 13 *Nomada pacifica*
- Fig. 14 *Nomada sakura*
- Fig. 15 *Nomada sunayamana*





## Plate 4

- Fig. 16 *Nomada yanoi*
- Fig. 17 *Nomada yasuteyamana*
- Fig. 18 *Nomada yunokawana*
- Fig. 19 *Pasites maculatus pekingensis*
- Fig. 20 *Sphecodes breviclypeatus*
- Fig. 21 *Sphecodes chibaensis*
- Fig. 22 *Sphecodes cristatus pekingensis*
- Fig. 23 *Sphecodes fudzi*
- Fig. 24 *Sphecodes itidyo*
- Fig. 25 *Sphecodes ohdeyamanus*
- Fig. 26 *Sphecodes taicho*
- Fig. 27 *Ampulex albobarbata*
- Fig. 28 *Crabro koreanus*
- Fig. 29 *Crossocerus breviclypeatus*
- Fig. 30 *Crossocerus capitosus yamato*



16



17



18



19



20



21



22



23



24



25



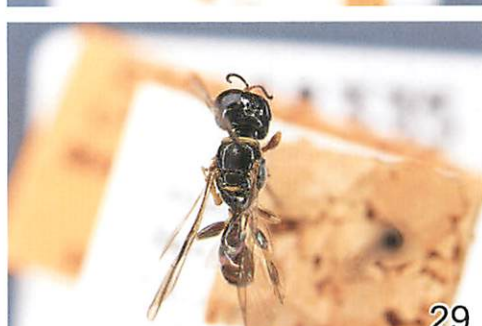
26



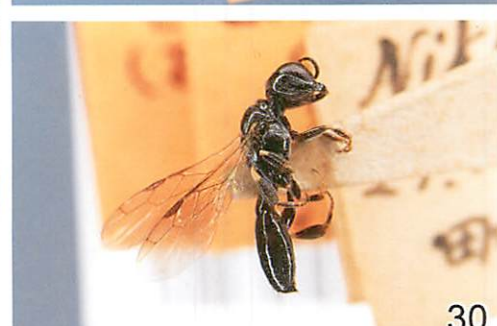
27



28



29



30

## Plate 5

- Fig. 31 *Crossocerus heydenii nipponis*
- Fig. 32 *Crossocerus verhoeffi sudai*
- Fig. 33 *Ectemnius cavifrons nipponensis*
- Fig. 34 *Ectemnius rubicola nipponis*
- Fig. 35 *Ectemnius schlettereri japonicus*
- Fig. 36 *Lestica okinawana*
- Fig. 37 *Liris subtessellatus ogasawarae*
- Fig. 38 *Lyroda fukuensis*
- Fig. 39 *Nitela yasumatsui*
- Fig. 40 *Rhopalum kuwayamai nikkoense*
- Fig. 41 *Rhopalum succineicollarum*
- Fig. 42 *Tachysphex sinensis yaeyamanus*
- Fig. 43 *Tachytes fruticis*
- Fig. 44 *Tachytes nipponicus*
- Fig. 45 *Trypoxylon monticola*





31



32



33



34



35



36



37



38



39



40



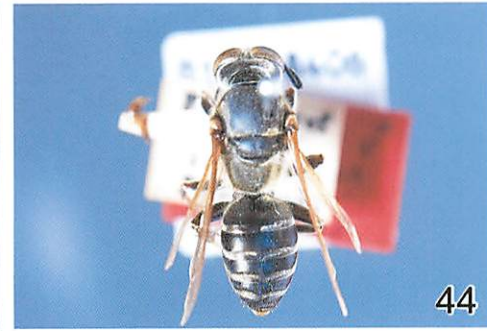
41



42



43



44



45

## Plate 6

- Fig. 46 *Trypoxylon nipponicum*
- Fig. 47 *Trypoxylon pulawskii*
- Fig. 48 *Trypoxylon rufiventre*
- Fig. 49 *Trypoxylon ryukyuense*
- Fig. 50 *Trypoxylon saitamaense*
- Fig. 51 *Trypoxylon shimoyamai*
- Fig. 52 *Alysson japonicus*
- Fig. 53 *Alysson sibiricus nipponius*
- Fig. 54 *Argogorytes nipponis*
- Fig. 55 *Bembecinus tanoi*
- Fig. 56 *Dienoplus tumidus japonensis*
- Fig. 57 *Gorytes fulvohirtus*
- Fig. 58 *Gorytes hakutozanus*
- Fig. 59 *Gorytes ishigakiensis*
- Fig. 60 *Lestiphorus bilunulatus yamatonis*





46



47



48



49



50



51



52



53



54



55



56



57



58



59



60

## Plate 7

- Fig. 61 *Nysson trimaculatus japonicus*  
Fig. 62 *Carinostigmus tanoi*  
Fig. 63 *Passaloecus dubius*  
Fig. 64 *Pemphredon sudaorum*  
Fig. 65 *Psen richardsi*  
Fig. 66 *Psenulus sudaorum*  
Fig. 67 *Spilomena nikkoensis*  
Fig. 68 *Stigmus iwatai*  
Fig. 69 *Stigmus quadriceps*  
Fig. 70 *Cerceris hortivaga amamiensis*  
Fig. 71 *Cerceris kumamotonis*  
Fig. 72 *Cerceris okumurai*  
Fig. 73 *Cerceris yuwanensis*  
Fig. 74 *Symmorphus nansetsurei*  
Fig. 75 *Symmorphus sounkionis*







## Plate 8

- Fig. 76 *Trogaspidia chiaiensis*
- Fig. 77 *Trogaspidia fukudai*
- Fig. 78 *Anoplius valdezi ryukyuensis*
- Fig. 79 *Ferreoloides ryukyuensis*
- Fig. 80 *Hemipepsis yayeyamana*
- Fig. 81 *Morochara nigripennis yayeyamana*
- Fig. 82 *Liacos melanogaster*
- Fig. 83 *Tiphia komoronis*
- Fig. 84 *Tiphia nipponica*
- Fig. 85 *Tiphia sudai*
- Fig. 86 *Orthogonalos fukuiensis*
- Fig. 87 *Orussus rufipes*
- Fig. 88 *Sceliphron deforme nipponicum*
- Fig. 89 *Campsomeris monjiensis ryukyuana*
- Fig. 90 *Sphex fukuianus*





兵庫県立人と自然の博物館収蔵資料目録 第2集

「常木勝次博士膜翅目昆虫タイプ標本目録」

編集者 兵庫県立人と自然の博物館 系統分類研究部

発行者 兵庫県立人と自然の博物館

〒669-13 兵庫県三田市弥生が丘6丁目

TEL. (0795) 59-2001

発行日 1997年3月31日

印刷日 1997年3月31日

印刷所 ウニスガ印刷株式会社

〒677 兵庫県西脇市和布町39

TEL. (0795) 22-3226

